



# welever

We move the world

# Manifesto

**Webelieve** that social potential lies in every individual. For that we foster innovation and creativity within individual, encouraging his/her ideas to penetrate upward, into their organisations and communities

**We will** change the DNA of future generations, encouraging them to be key agents for social change. New generations will interiorize the concept that positive social impact = immediate personal reward

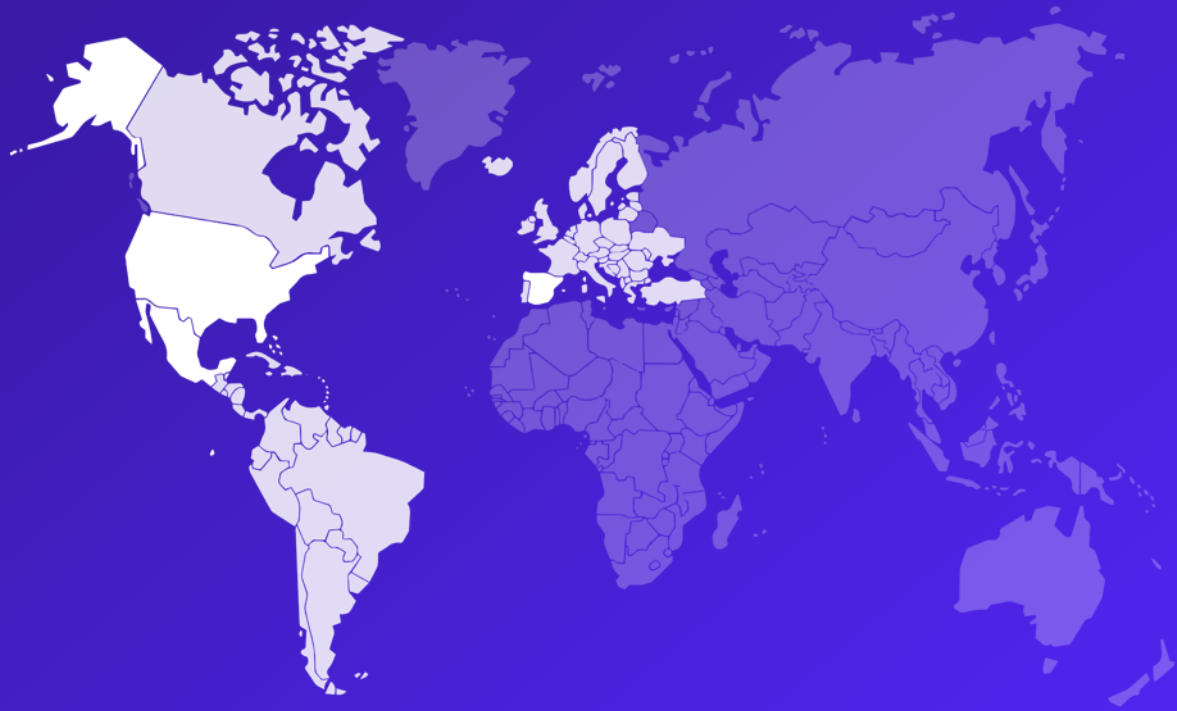
**We collaborate** with the SDGs, empowering the base of the pyramidal structure and encouraging them to speak a universal language of social impact

**We empower** citizens so that technology can make their communities soulful

**We believe** that human beings have an innate responsibility to do good and make the world a better place



# Where are we

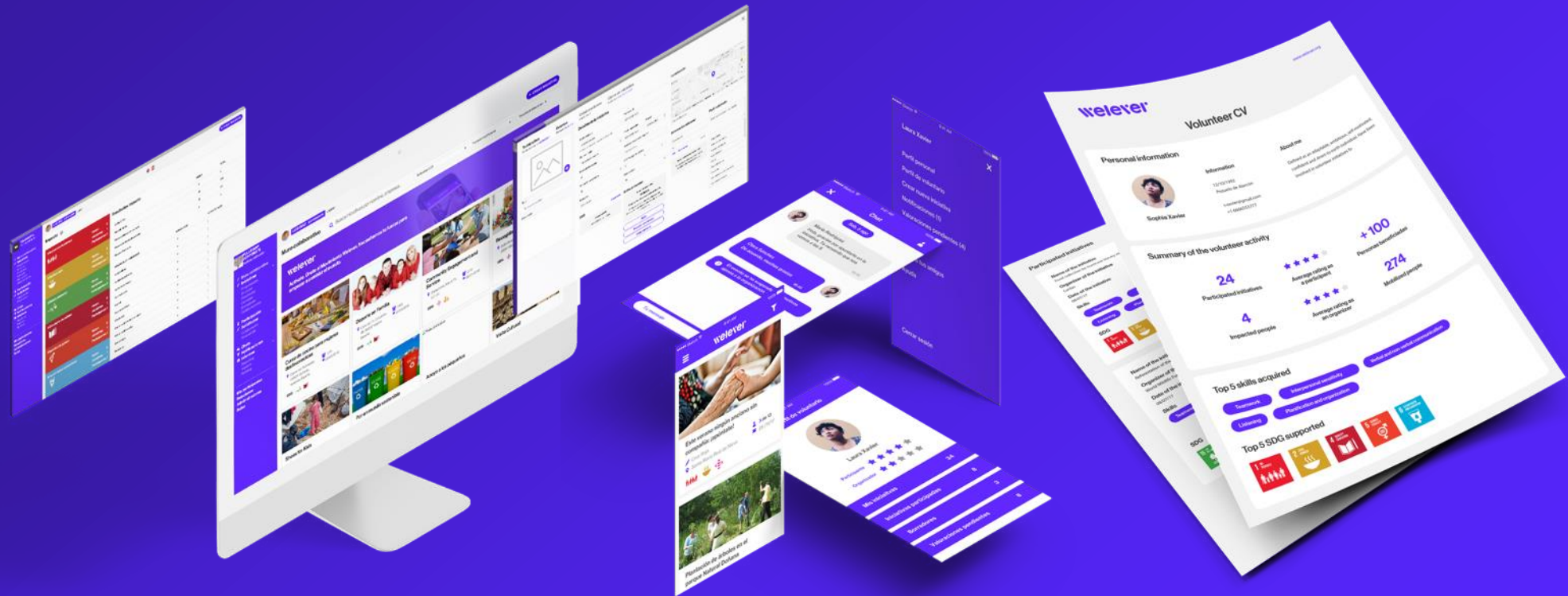


- 📍 Europe  
Madrid, Spain
- 📍 North America  
Miami, USA.
- 📍 Latin America  
Mexico City, Mexico

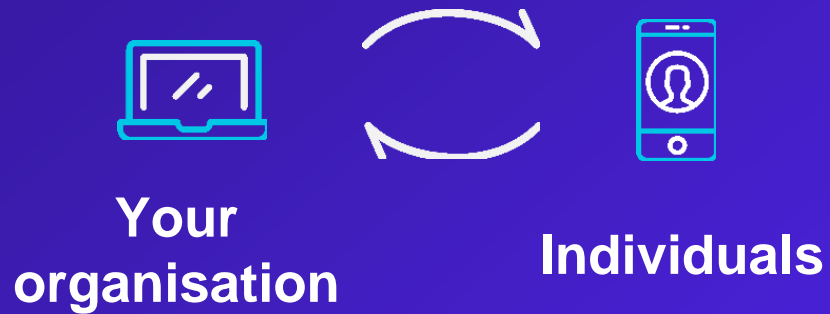


# Your platform of social action management

The perfect solution to create, manage, measure and report your social action, aligned with UN's SDGs



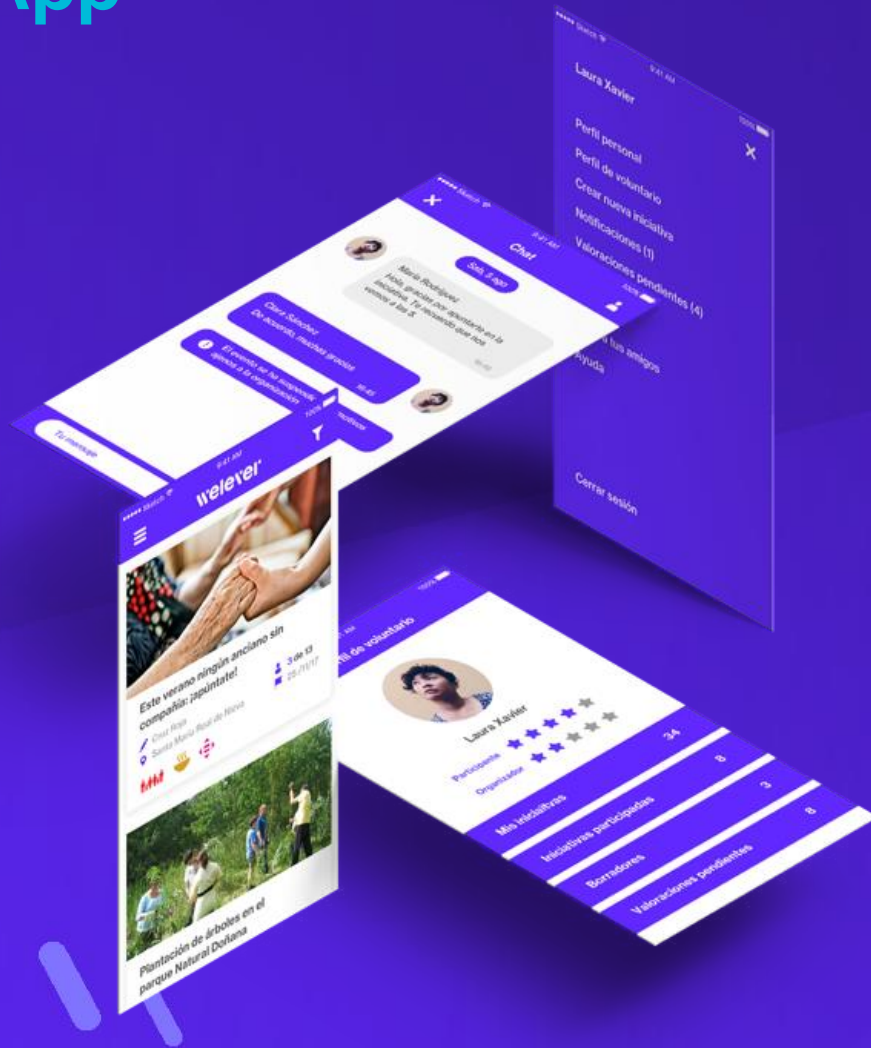
# How it works



**App:** for individuals to collaborate on and directly propose social initiatives

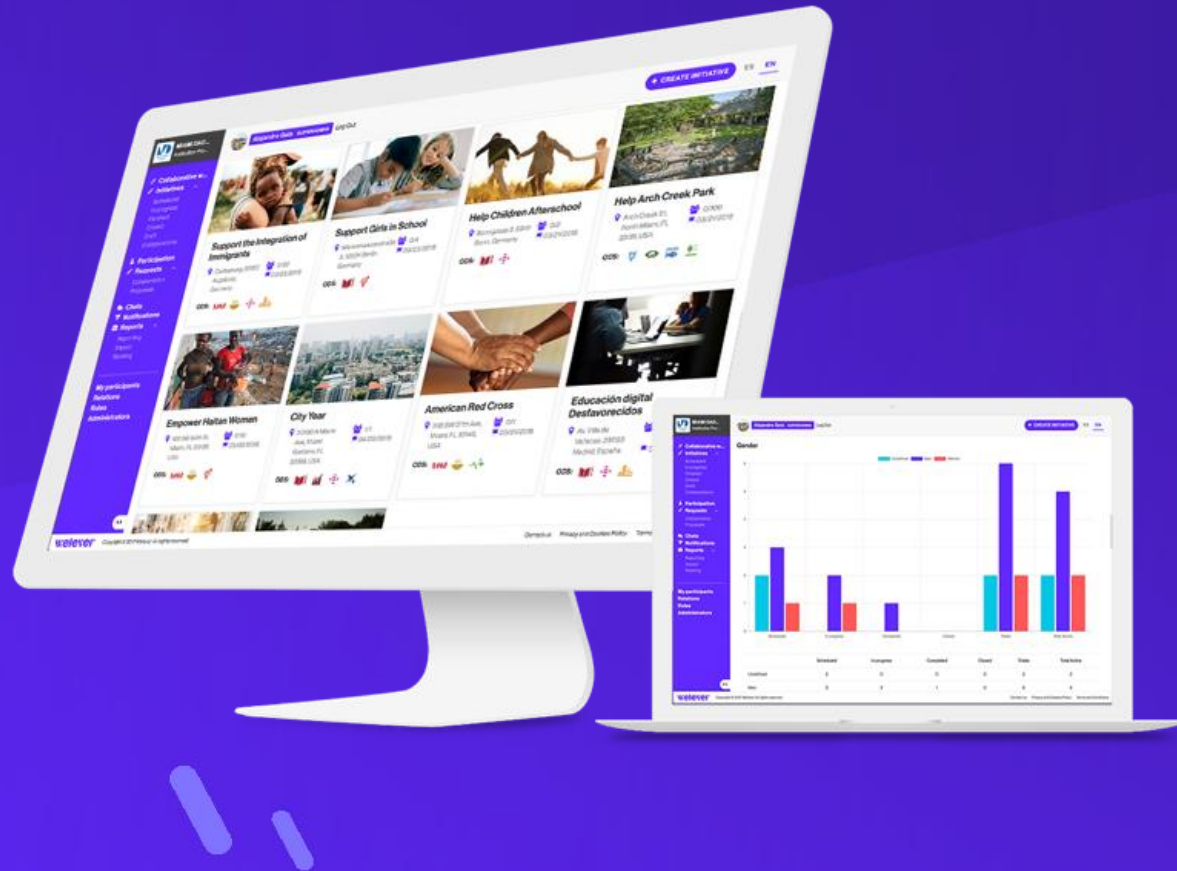
**Web based control panel:** for your organisation to manage, create and collaborate with individuals, NGOs, other organisations on social action and **create custom reports**

# The App



- **Wall of Initiatives** filtered according to interests, distance from the user and date
- **Initiative page that contains all information** (description, time/date, location, organising entity detail, profile of volunteer required) necessary to make for a good fit between the needs of an initiative and the resources each party can offer
- **Option to create own initiative, participate in initiatives launched by others**
- **User profile** with detailed information outlining the strengths and qualities of the user, a section to manage all initiatives proposed and participated in and a section where all valuations and ratings are contained.

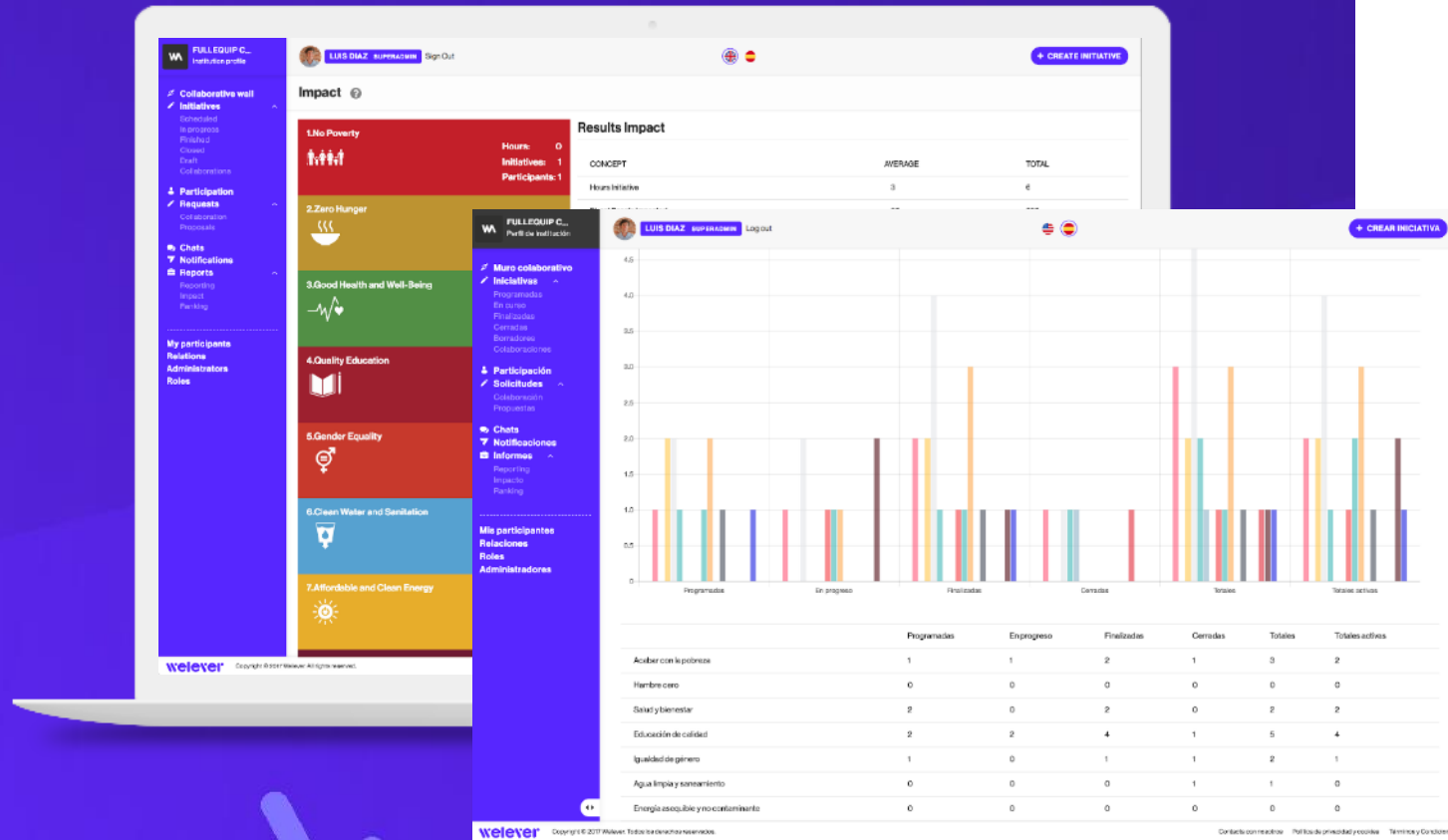
# The Web Platform



- **Integrated system to measure and certify** (supervised by an external organisation) **the impact** that is generated in the platform providing very valuable data and analysis.
- **Creation, management and follow-up** of initiatives via a web based control panel.
- **Management of all participants** where the profile of each can be visualised and contact can be maintained via a chat the participant will receive directly in the app.
- **Detailed reports.**
- **Push notifications** (from the web based panel to the app) with the ability to segment messages for specific user groups.



# The Reports



Comprehensive **reports** that measure impact, and track your organisation's contribution to the **Sustainable Development Goals**

- **Stats Reports**
- **Impact Reports**
- **Ranking Reports**

# SUSTAINABLE DEVELOPMENT GOALS

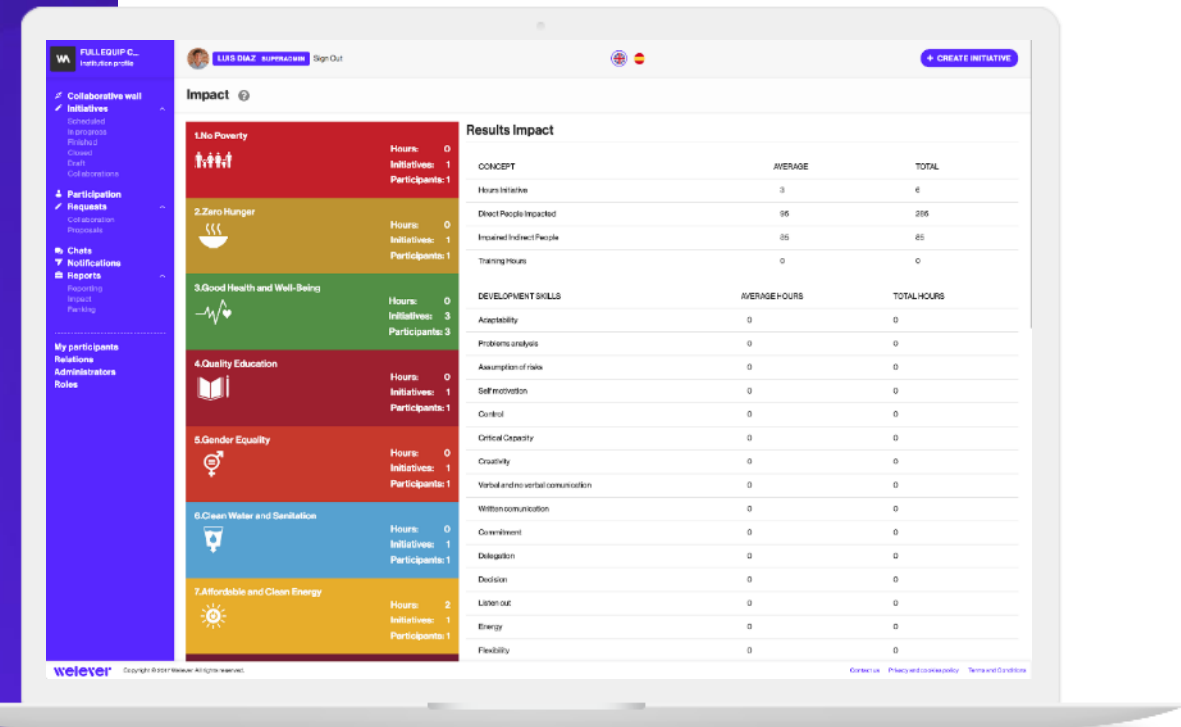


SDGs are a universal call to action to end poverty, protect the planet and ensure that all people enjoy peace and prosperity

# Welever and the SDGs

## SUSTAINABLE DEVELOPMENT GOALS

- All **data linked** to SDGs
- **Impact measurement** based on SDGs
- SDGs **impact reports** for organisations and individuals
- Developed in collaboration with **global experts and the UN**



## SDGs through people



**Now, you are the  
social leader**

**Welever** shifts its focus to people, giving them agency to contribute to community action. With our app, it is individuals who achieve specific, measurable and evaluable Sustainable Development Goals by proposing social initiatives to their organisations and communities. Through our **Welever** algorithm, you will understand the degree of contribution in the achievement of community impact.



# Social CV

- Measure **individual impact**
- Complete **history of social action**
- Export to **LinkedIn\***
- **Ratings** and Welever Points (Social Media Sharing, Challenges, Gamification)
- **SDGs** Supported
- **Skills** Acquired



# Citizens

**Create and  
Manage your own  
Initiatives**

**Social Initiatives at  
your Reach**

Become the **agent of  
change** for meeting  
the UN's 2030 agenda

**Create and Build  
your Social CV**

**Take Action** and be  
the Leader of  
Change

**welever**

**Develop New Skills**  
through participating  
in Social Endeavors

**Involve your Community  
or Company**

**Measure you degree  
of achievement of an  
SDG**

**Find People with your  
same Values and  
Beliefs**

Welever for **Education**



## **Activation of volunteers in educational institutions**

If you are a university or any other public institution, your role in the implementation of the SDGs is key, and Welever makes it easier for you

# Education

**Simplifies  
Management of  
Social Actions**

**Helps Change the  
DNA of Future  
Generations**

**Measure your  
contribution to  
SDGs**

**Activates Volunteers  
within Students**

**Helps Identify  
Young Leaders**

**Provides Access  
to other Entities**

**welever**

**Motivates & Engages  
Students**

**Increases Academic  
Institution's Reputation**

**Streamlines  
Communications  
with Students**

**Be part of a global  
community**



Welever for **Companies**



**The best tool for  
managing social  
responsibility**

Welever simplifies the managing of your CSR program, empowers your employees to get their own initiatives running, identifies talent, measures your impact and generates reports, accommodating the needed level of depth and complexity

# Companies



Welever for **NGO**



## The digital tool for volunteer management

Automate your volunteer management processes and recruit new ones in a much faster, safer and more consistent manner. Publish initiatives so that companies can include them in their corporate volunteering plan and create new alliances. Give your projects higher visibility and ensure more donations, financial help and greater impact

# NGO





Welever for **Public Administrations**



**Kickstart the human  
quality of your area**

Ensure that values such as collaboration,  
service and social leadership are  
characteristical to your area

# Public Administrations

**Generates Impact Reports of your Community**

**Evaluate the human quality of your environment**

**Improves Public Image**

**Reinforces Contribution to SDGs**

**Eases Decision Making**

**welever**

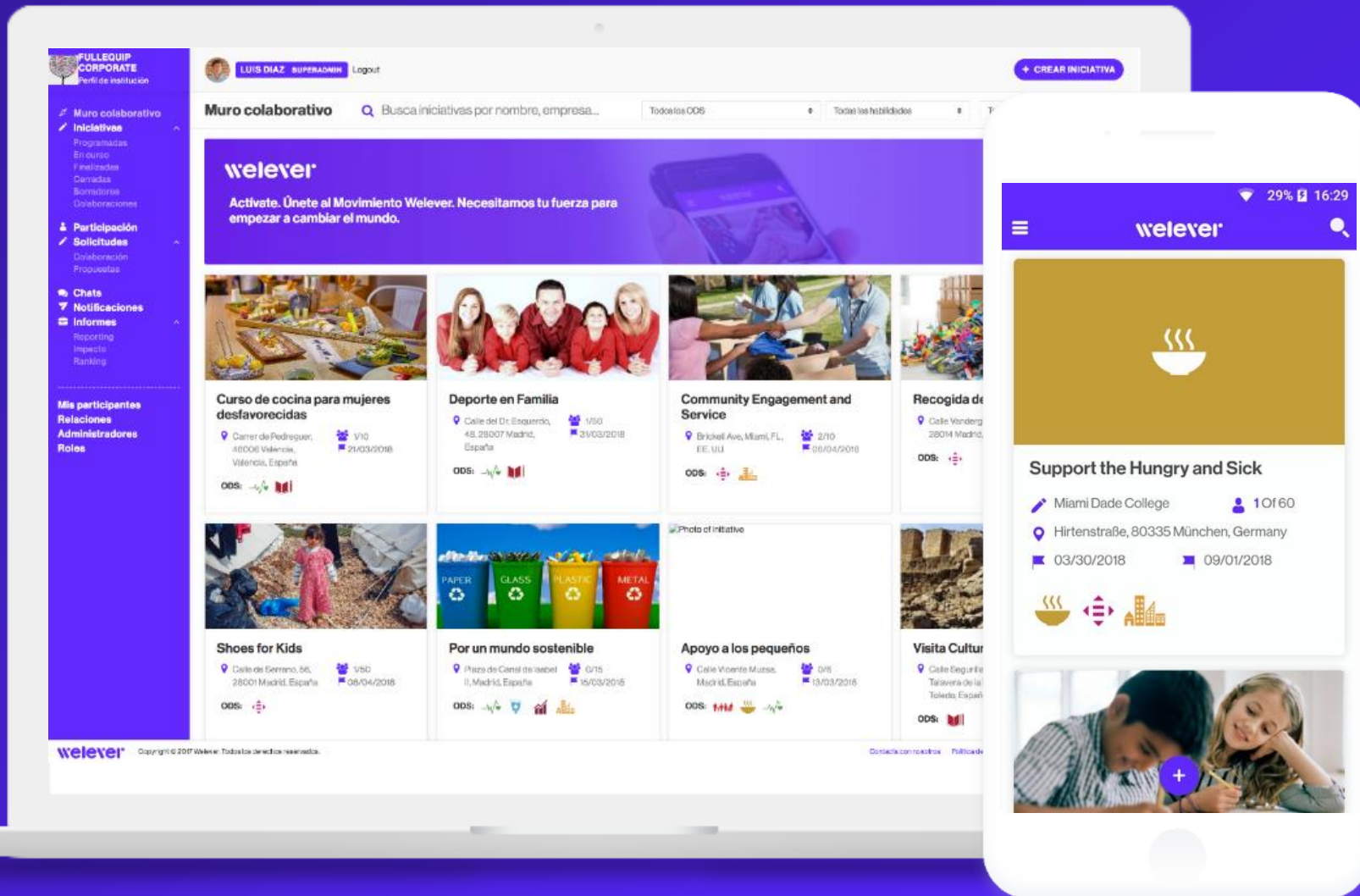
**Motivates & Engages the Community**

**Extremely Cost Efficient SAS**

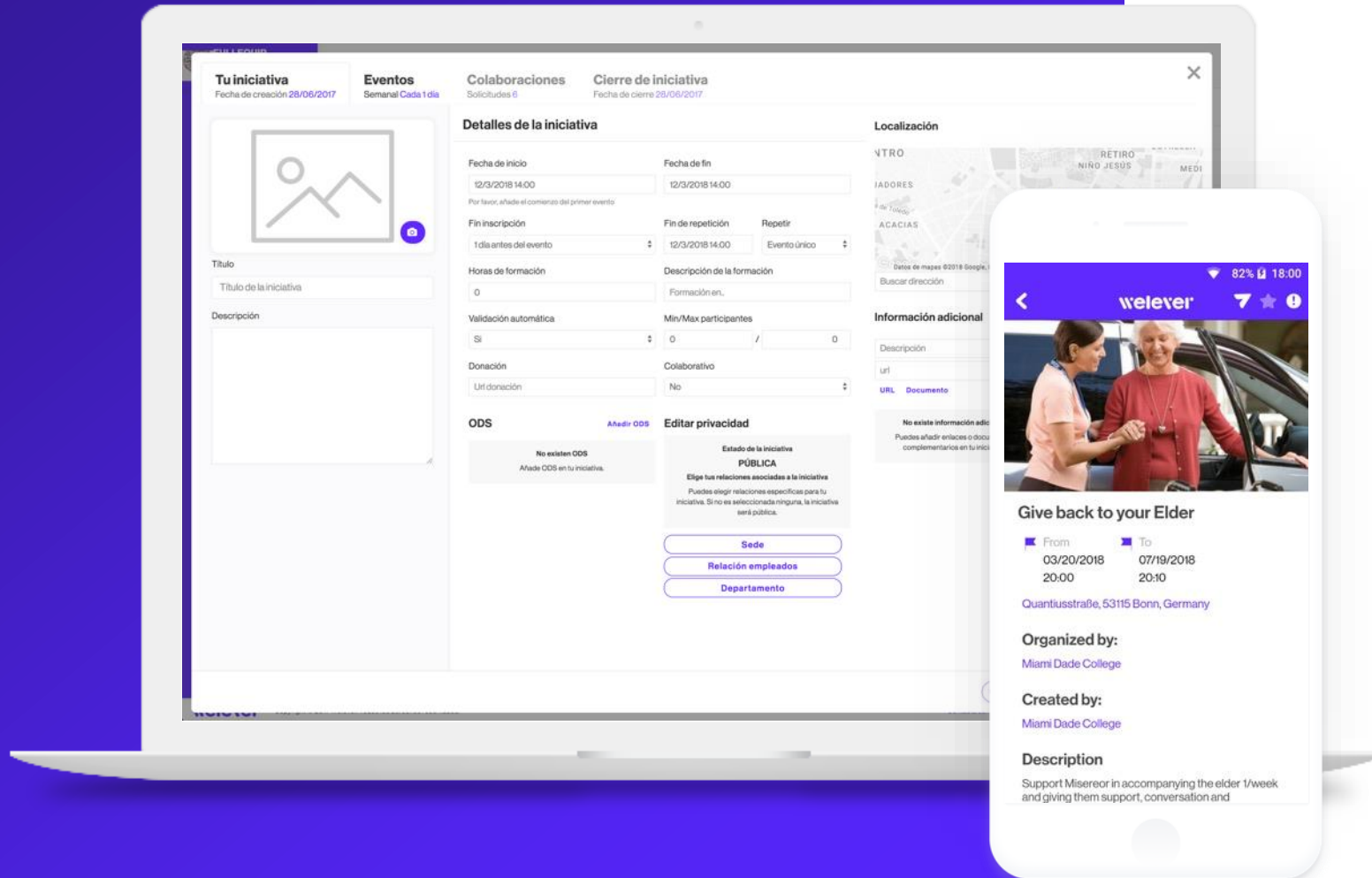
**Streamlines Communications with Citizens**

**Contributes to Promoting Social Awareness**

# Welever functionalities



# Create, manage and measure initiatives



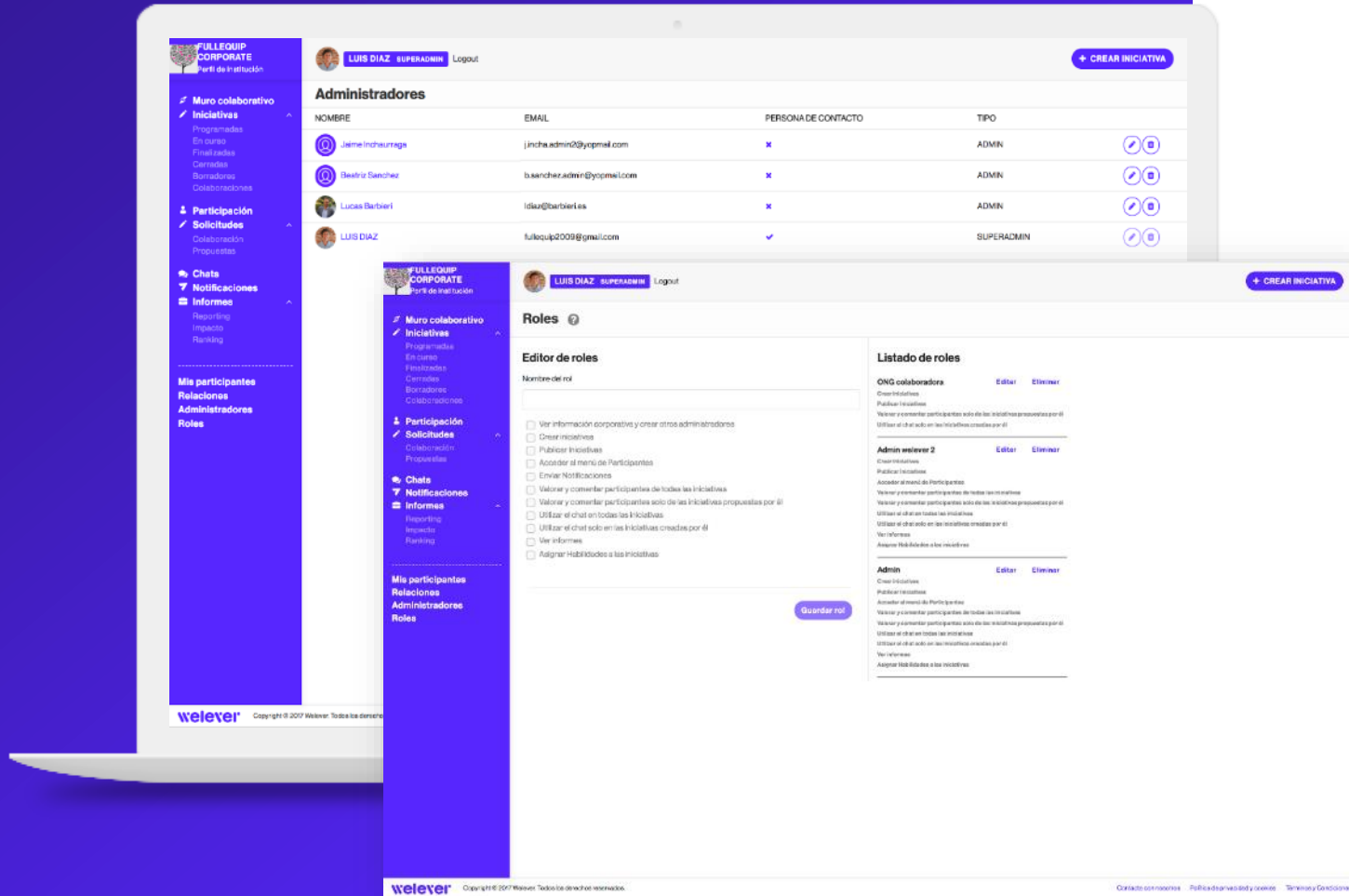
- Create, manage and measure initiatives

Create initiatives, public or private, with detailed information (location, date, SDG, links, profile requested ...)

- Administrators
- Entity relations
- Registered users
- Repeat initiatives over time
- Ranking reports
- Wall of collaborative initiatives
- Impact measurement
- Welever platform customization

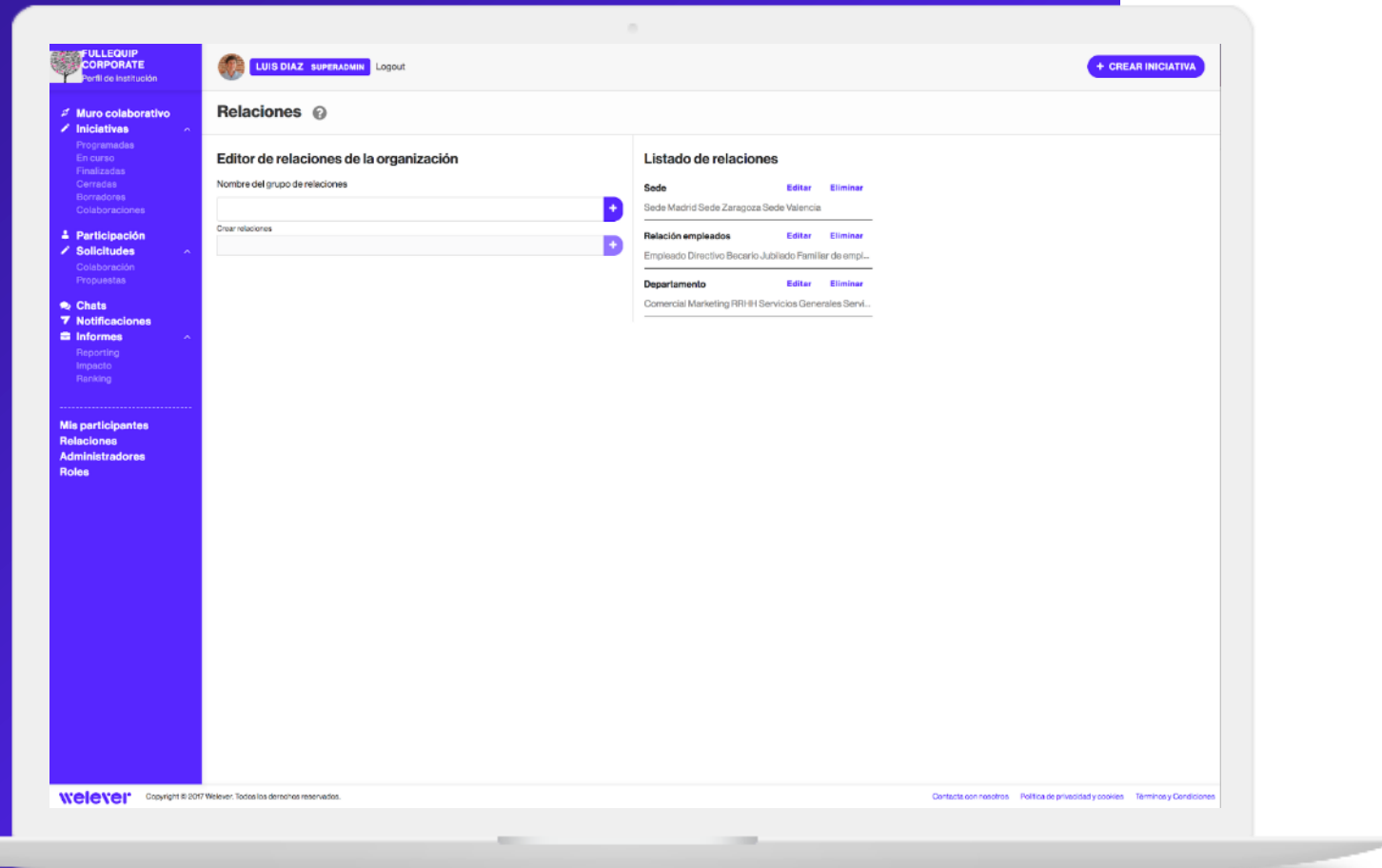


# Creation of roles and permissions



- Create, manage and measure initiatives
- Administrators  
Create administrators and manage their permissions.
- Entity relations
- Registered users
- Repeat initiatives over time
- Ranking reports
- Wall of collaborative initiatives
- Impact measurement
- Welever platform customization

# Create and manage relationships



- Create, manage and measure initiatives

- Administrators

- Entity relations

Create and manage entity relations by headquarters, departments, type of volunteer...

- Registered users

- Repeat initiatives over time

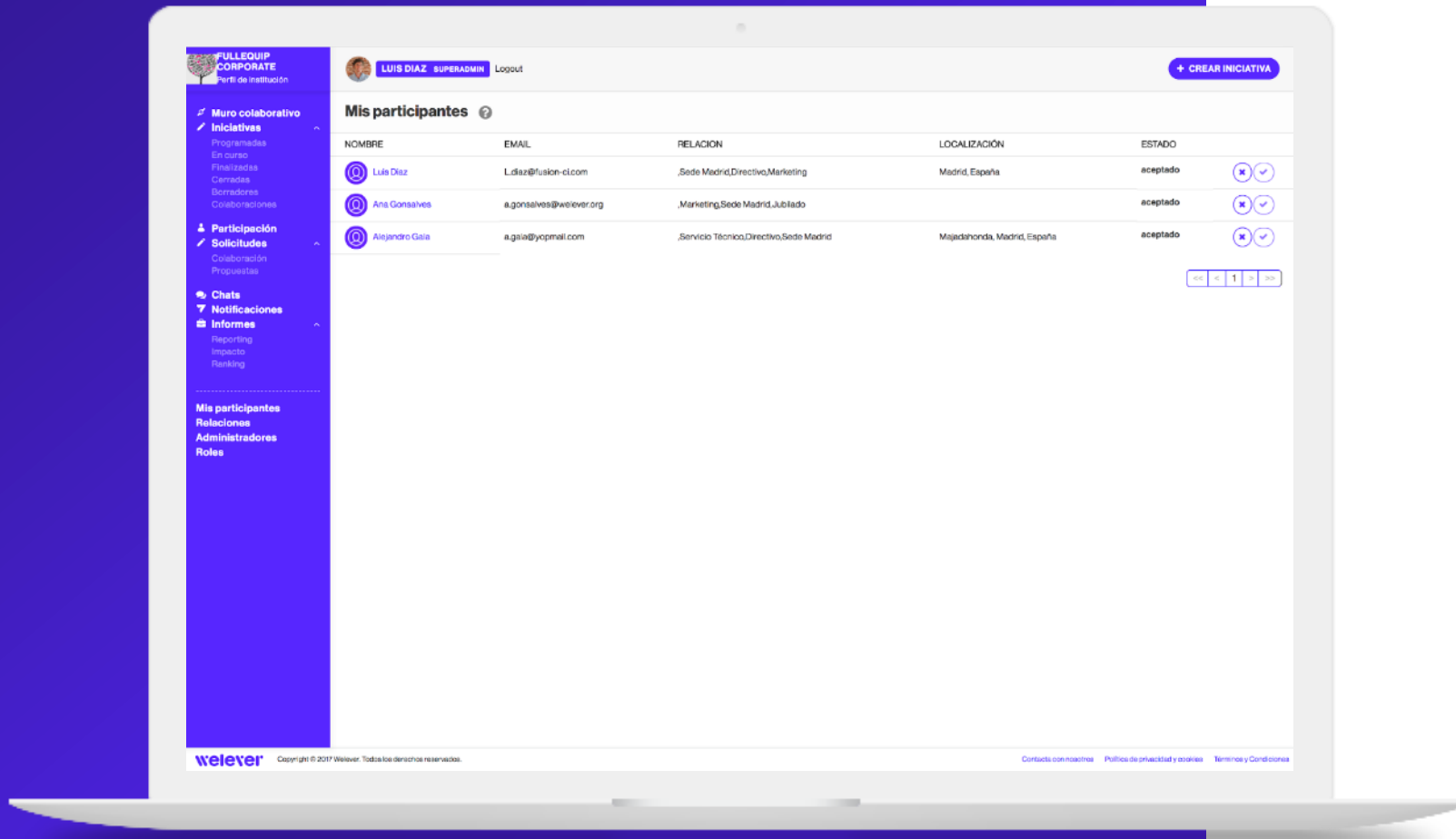
- Ranking reports

- Wall of collaborative initiatives

- Impact measurement

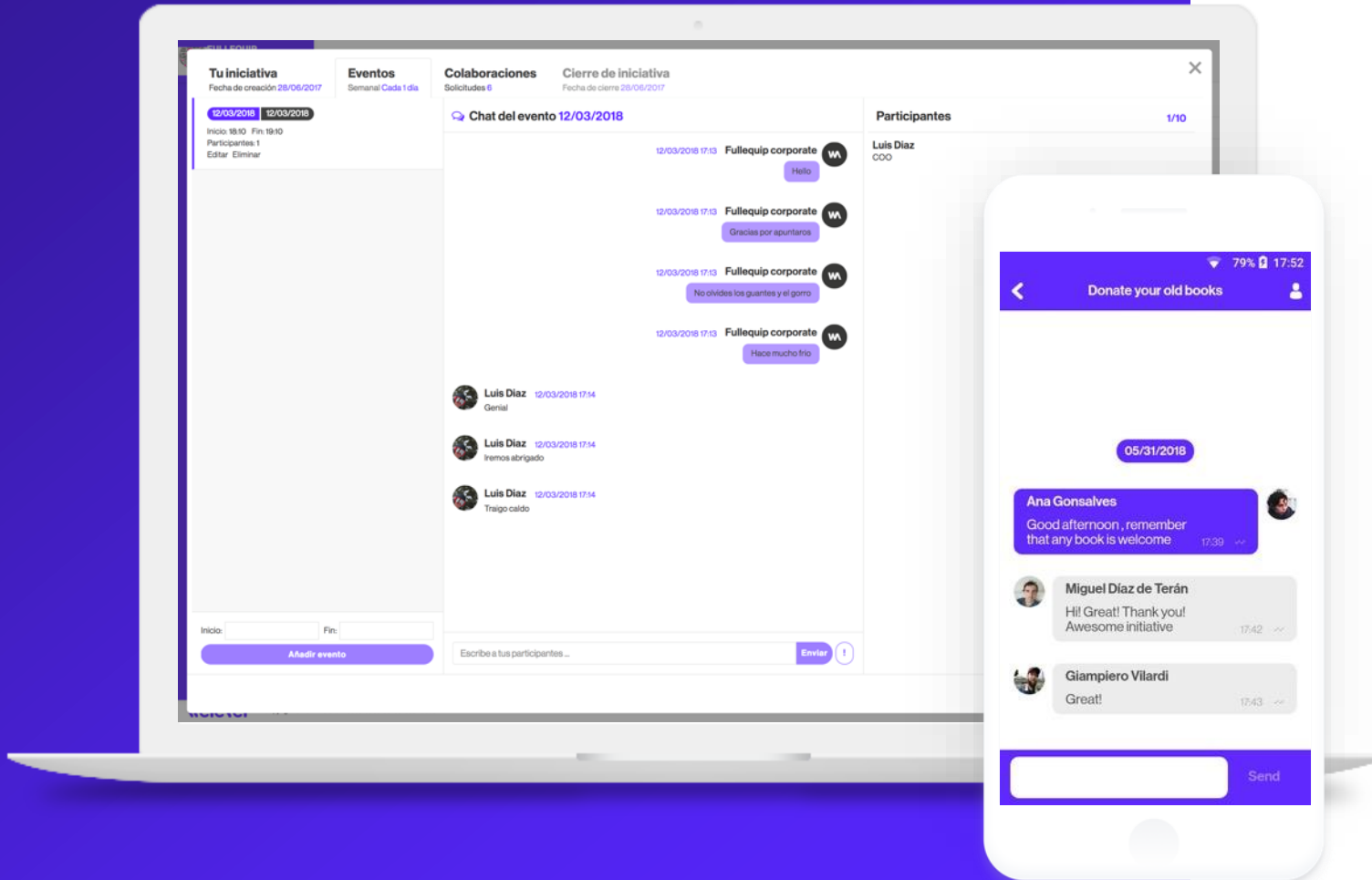
- Welever platform customization

# Registered users



- Create, manage and measure initiatives
  - Administrators
  - Entity relations
  - Registered users
- Validate the volunteers of your organization and create a socially responsible community.
- Repeat initiatives over time
  - Ranking reports
  - Wall of collaborative initiatives
  - Impact measurement
  - Welever platform customization

# Repeat initiatives over time



- Create, manage and measure initiatives

- Administrators

- Entity relations

- Registered users

- Repeat initiatives over time

You can create different events for each initiative, and have a specific chat for each event.

- Ranking reports

- Wall of collaborative initiatives

- Impact measurement

- Welever platform customization

# Ranking reports

The screenshot displays the 'Ranking' section of the Welever platform. It features a sidebar with navigation options like 'Muro colaborativo', 'Iniciativas', 'Participación', 'Solicitudes', 'Chats', 'Notificaciones', and 'Informes'. The main content area is divided into four ranking tables:

- Ranking iniciativas:** A table with 6 columns: TOP 10 INICIATIVAS, PARTICIPANTES, TOP 10 INICIATIVAS, TASA DE PARTICIPACIÓN MAX, TOP 10 INICIATIVAS, and VALORACIÓN. It lists three initiatives with 200, 120, and 120 participants respectively, all at an 80% participation rate and a score of 5.
- Ranking ODS:** A table with 6 columns: TOP 10 ODS, PARTICIPANTES, TOP 10 ODS, TASA DE PARTICIPACIÓN MAX, TOP 10 ODS, and VALORACIÓN. It lists three ODS with 200, 120, and 120 participants respectively, all at an 80% participation rate and a score of 5.
- Ranking participantes:** A table with 6 columns: TOP 10 PARTICIPANTES, INICIATIVAS PARTICIPADAS, TOP 10 PARTICIPANTES, INICIATIVAS CREADAS, TOP 10 ODS, and VALORACIÓN. It lists three participants, each with 200 initiatives participated in and 200 created, all with a score of 5.
- Ranking instituciones colaboradoras:** A table with 6 columns: TOP 10 COLABORADORES, INICIATIVAS, TOP 10 COLABORADORES, TASA DE PARTICIPACIÓN MAX, TOP 10 COLABORADORES, and PARTICIPANTES. It lists three collaborating institutions, each with 200 initiatives, an 80% participation rate, and 200 participants, all with a score of 5.

The footer of the interface includes the Welever logo, copyright information (© 2017 Welever), and links for 'Contacta con nosotros', 'Política de privacidad y cookies', and 'Términos y Condiciones'.

- Create, manage and measure initiatives

- Administrators

- Entity relations

- Registered users

- Repeat initiatives over time

- Ranking reports

Ranking segmented by initiatives, SDG, participants ...

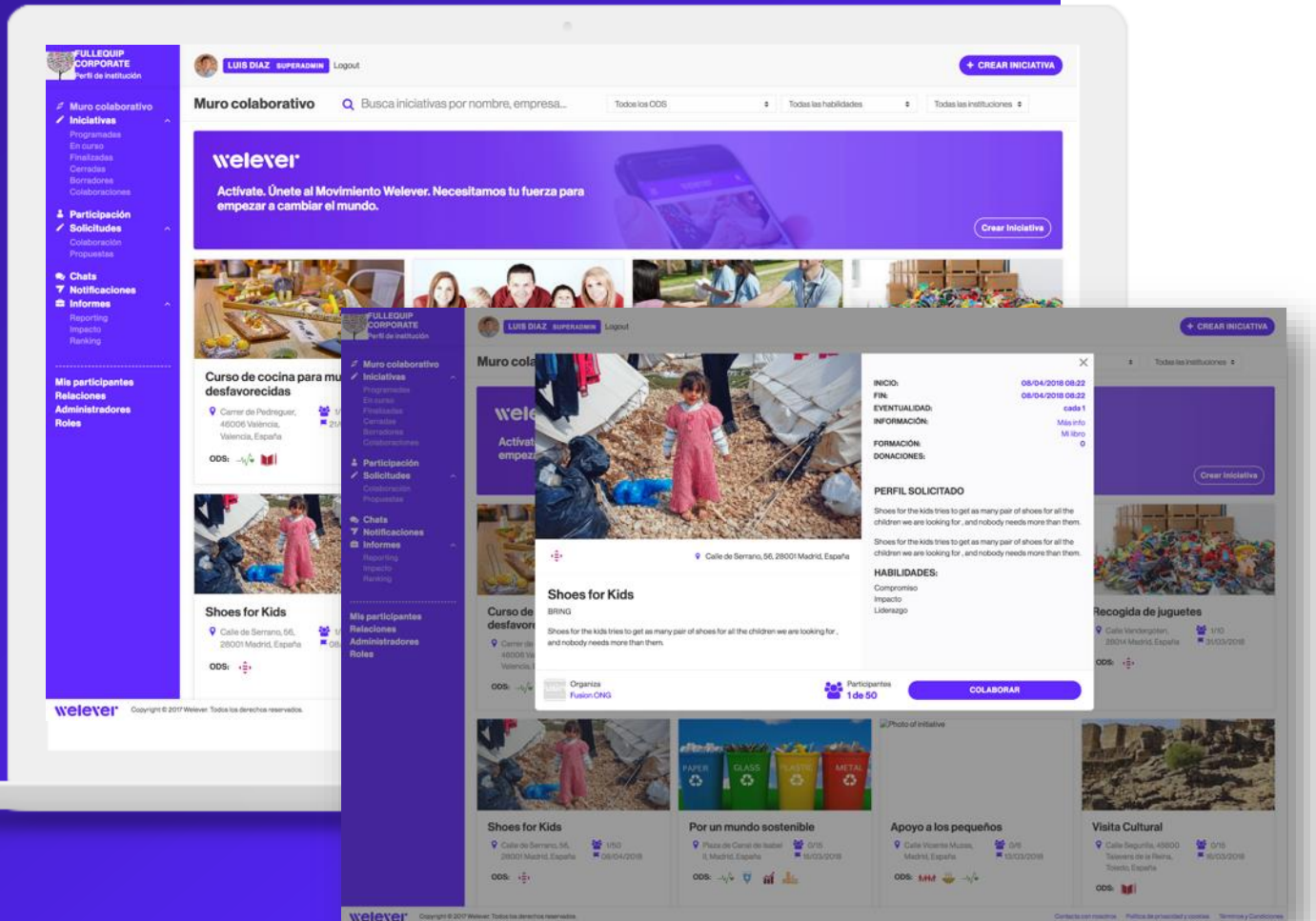
- Wall of collaborative initiatives

- Impact measurement

- Welever platform customization

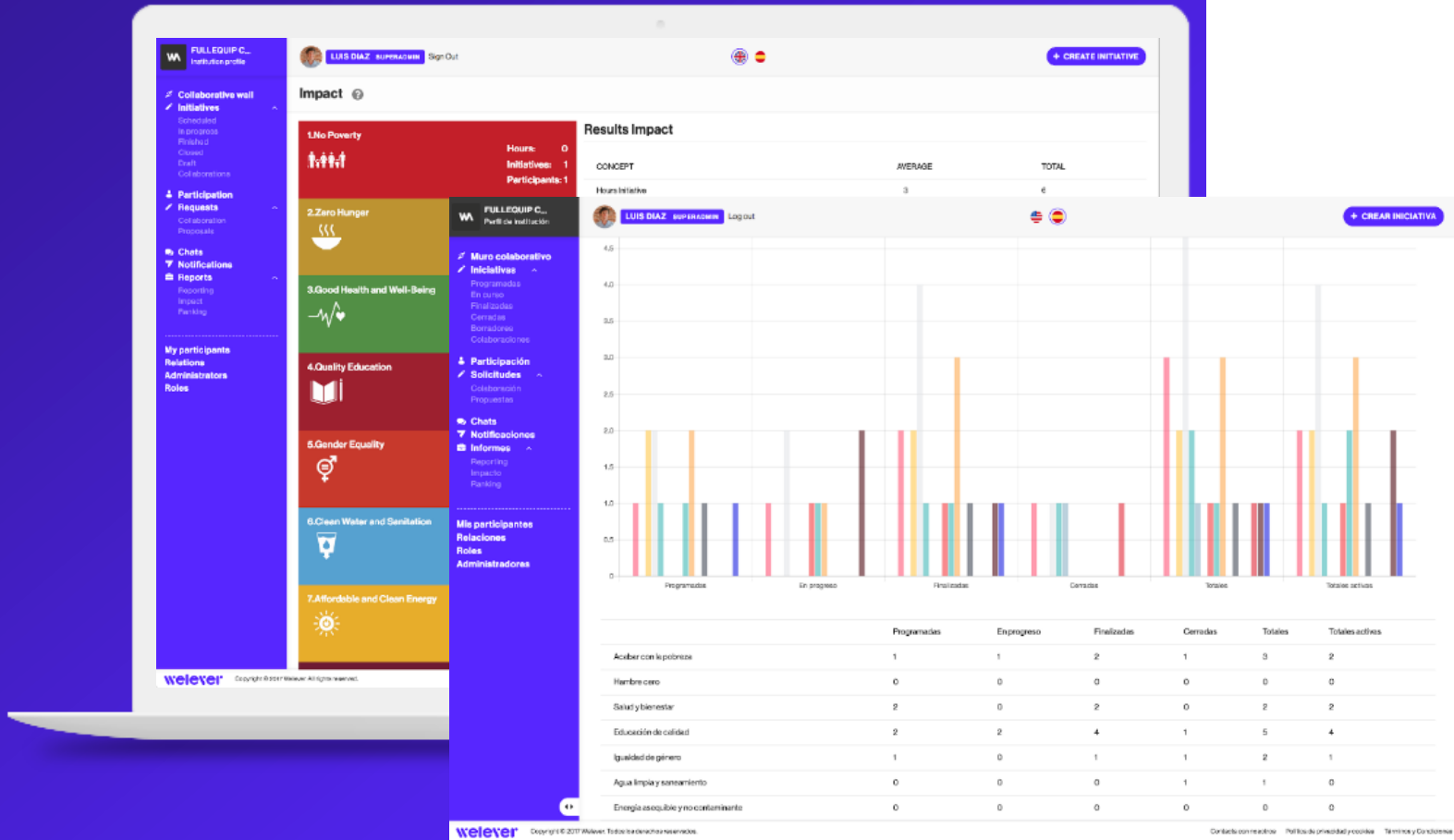
# Wall of collaborative initiatives

- Create, manage and measure initiatives
- Administrators
- Entity relations
- Registered users
- Repeat initiatives over time
- Ranking reports
- Wall of collaborative initiatives  
Discover the initiatives of other organizations and start collaborating with them.
- Impact measurement
- Welever platform customization



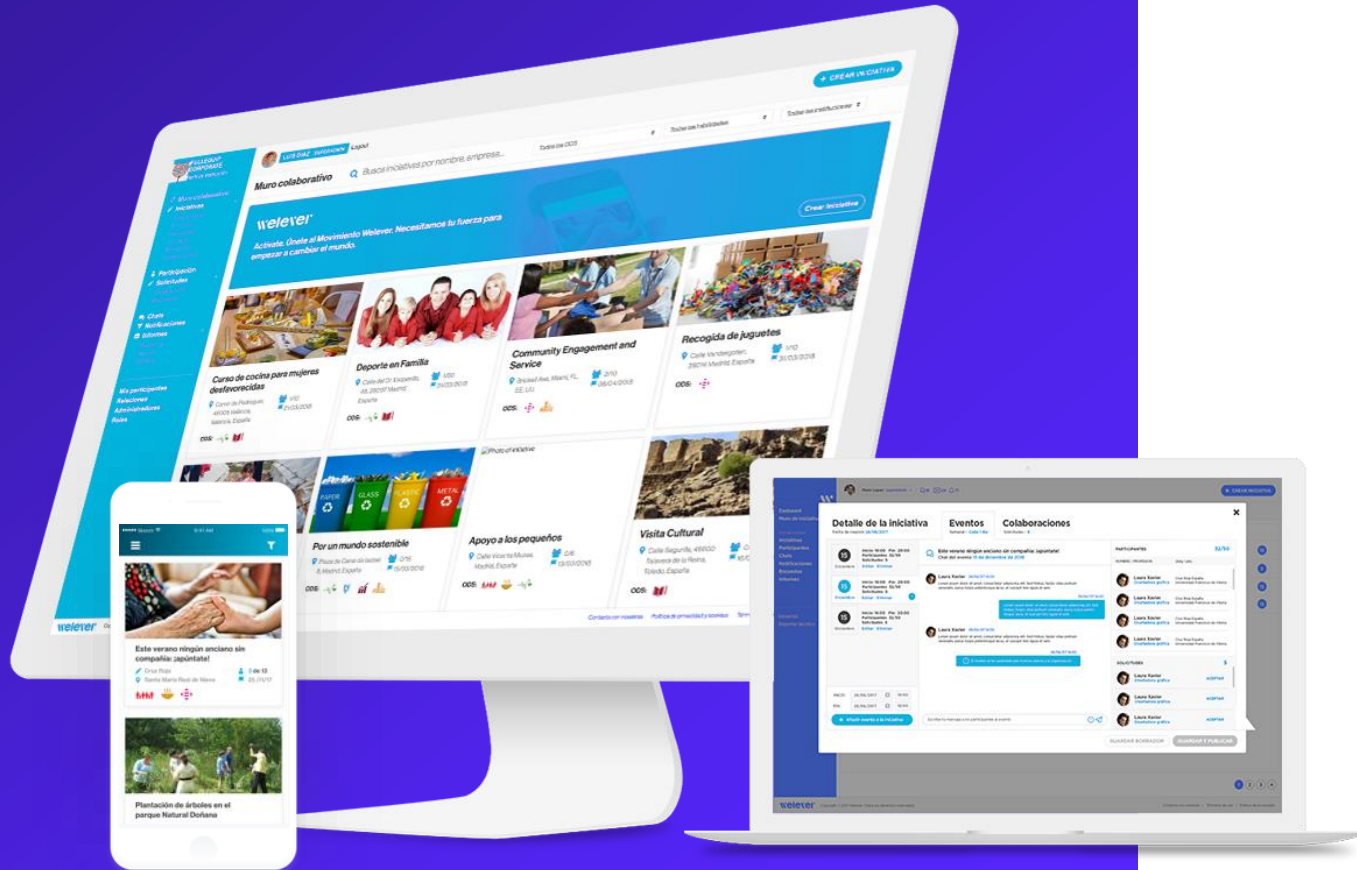


# Impact measurement



- Create, manage and measure initiatives
  - Administrators
  - Entity relations
  - Registered users
  - Repeat initiatives over time
  - Ranking reports
  - Wall of collaborative initiatives
  - Impact measurement
- Measure the impact of your actions, segmented by hours, people impacted, economic results ...
- Welever platform customization

# Welever platform customization



- Create, manage and measure initiatives
  - Administrators
  - Entity relations
  - Registered users
  - Repeat initiatives over time
  - Ranking reports
  - Wall of collaborative initiatives
  - Impact measurement
  - Welever platform customization
- Customize the Welever platform with colors and corporate typography.



# welever

For more information:  
[info@welever.org](mailto:info@welever.org)  
[www.welever.org](http://www.welever.org)