



European leader in B2B Carsharing

www.mobilitytechgreen.com



Mobility Tech Green

Our core business? Carsharing.

Ever since its creation in May 2009, Mobility Tech Green has always offered **innovating technological tools** for companies and communities with the aim of helping them to achieve a better management of their vehicle fleets.

While more and more citizens are choosing to use on-demand vehicles rather than owning one, carsharing is slowly becoming a standard. In a corporate setting, carsharing can improve employees' daily mobility while making the management of the fleet vehicles easier and less expensive.

Our e-Colibri™ carsharing solution is designed to assist fleet managers in their daily tasks.

In some figures...



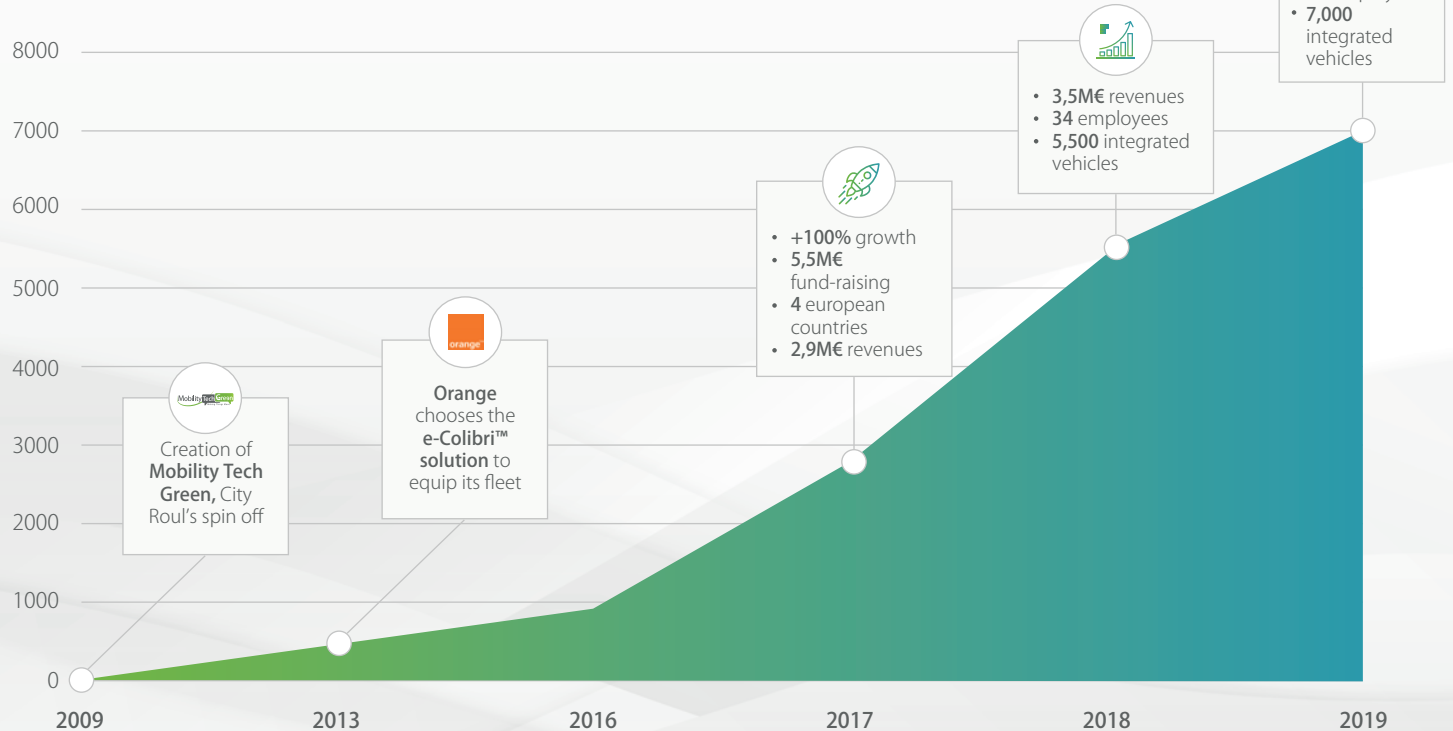
Customers' profiles



■ VSB ■ Communities ■ Key accounts
Medium-sized companies

Mobility Tech Green: B2B carsharing leader with 10 years of experience

Number of vehicles integrated in our e-Colibri™ solution



e-Colibri™ box on-board kit

Your shared vehicles in self-service



e-Colibri™ is a savoir-faire in the on-board technologies field. We introduce you below the different elements that will connect your vehicles to your management platform.



On-board computer

It connects the vehicle to our information system and enables the collection of the use data.



RFID & NFC badge reader

It reads professional users' cards to unlock the vehicle.



Connected keybox

It contains the keys of your vehicles and your fuel cards. It can also detect their presence.



End-way button

It enables to end an ongoing reservation and then free the vehicle for other users.

ODE

on-board computer

Our 100% proprietary hardware

In order to offer you the best carsharing service possible, Mobility Tech Green has internally developed its own on-board calculator, ODE. A complete knowledge of the software and of the equipment guarantees an optimal user experience.



Our own hardware

Mobility Tech Green masters all of the software and physical layers of the hardware.



4G network compatibility

ODE communicates in 4G to guarantee an optimal responsiveness of the vehicle.



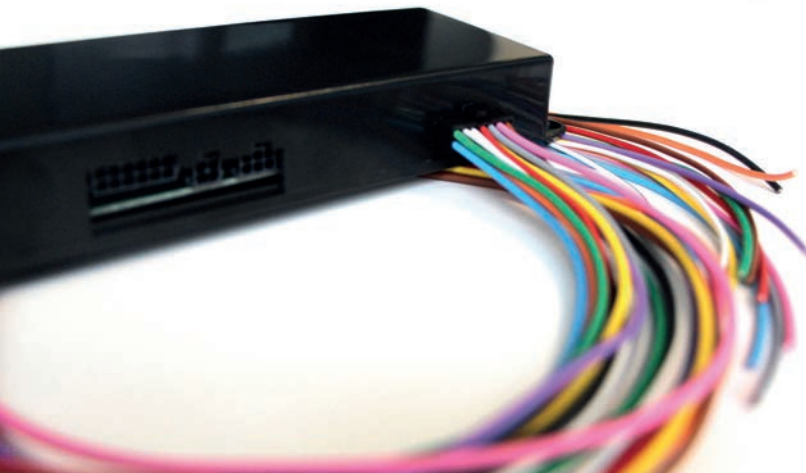
Compatible with most vehicles

Thermic or electric, modern or not, ODE can be installed on a wide range of models.



Bluetooth connection

The vehicle uses Bluetooth in order to communicate with the information system, even without network.



e-Colibri™ management back office

Drive your fleet on a daily basis

As the result of more than 10 years of expertise, our e-Colibri™ fleet management tool enables you to manage your carsharing vehicles, from the validation of the vehicles to the export of statistic data. This platform will become your daily working tool in order to have a better understanding of your fleet's activity and to adapt it to the real needs of your co-workers.



Real-time alerts system

On the dashboard of your platform, you can have access to every alert pertaining to your fleet's activity: subscriptions to handle, batteries alerts, new messages...
A genuine decision support tool.



Subscribers
management



Vehicles
management



Reservations
management



Invoicing
management



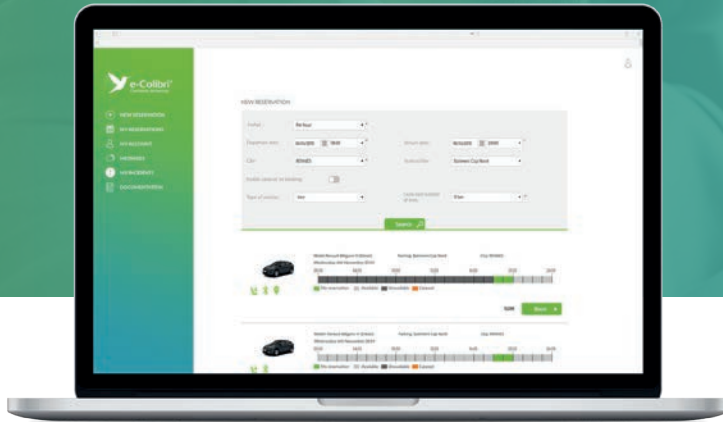
Maintenances
management



Statistics
module

e-Colibri™ reservation front office

Maximise the use of your vehicles



The **reservation front office** enables your users to book a self-service vehicle in only a few clicks. They just need to indicate their departure and returning times as well as their reference parking to view the schedules of the available vehicles. In case something unexpected happens, they can also cancel or extend their reservation from that platform.



New
reservation



Reservations
management



Carpooling
module



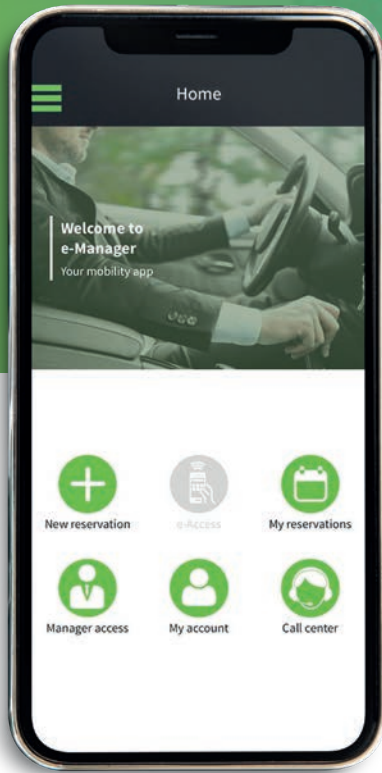
Messaging
service



Pro/perso
payment platform



Multimodal
platform



e-Manager™ mobile application

Your mobility assistant

The **e-Manager™ application** is your employees' new mobility assistant! Designed as the mobile addition to the front office, it enables them to create and manage their vehicle reservations, even when they are away on business trips, and more!



New
reservation



Ongoing reservation
management



Locking and
unlocking of
the vehicle



Check-ins
and **check-outs**



Eco-driving
mode



Push notifications
system



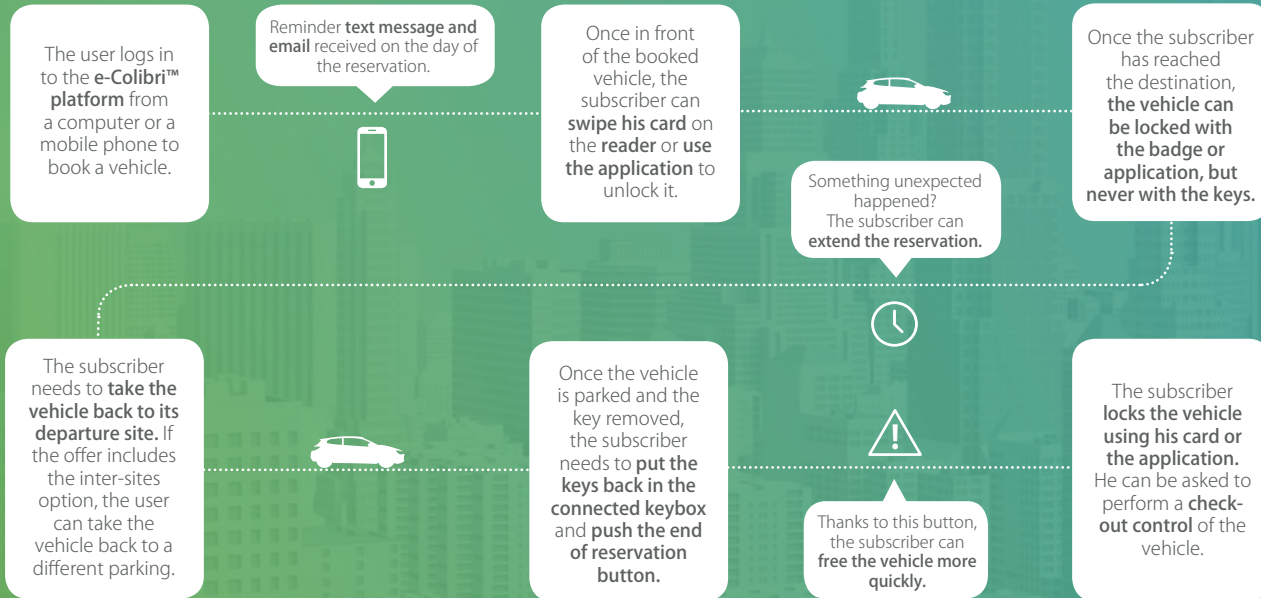
Available on
iOS



Available on
Android

User's journey

A shared and connected mobility, as simple as it can be



Spotlights on multimodality

A flexible offer for all types of travel

Mobility Tech Green has imagined a **multimodal and flexible mobility offer** to answer companies' individual and collective challenges! The regulatory framework of the use of vehicles in urban areas has been radically evolving for the past few years. Companies, with their fleets representing a wide part of the vehicles in circulation, have an essential role to play in these dynamics of change. This can start with a more diversified and more sustainable mobility offer. **Additional transport services help to always be able to offer the right vehicle, whenever and wherever you need it.**

- ✓ Maximise your vehicle fleet.
- ✓ Answer the mobility needs of your staff.
- ✓ Introduce more sustainable mobilities.
- ✓ Adapt to new traffic regulations.



Carsharing

A more and more widely introduced mobility service in professional fleets, **carsharing** enables employees to **book a self-service vehicle** depending on their needs. Carsharing is the perfect way to travel to meetings outside of the company and can also be available on evenings and weekends. A way to offer a convenient service to employees while maximising the use of the fleet!

Carpooling

Corporate carpooling can be done in different ways. For professional travels, like for common meetings for example. But the most common way for employees to use it remains the **home-work carpooling travels**.

A mobility which **induces less expenses** and **reinforces the social bound**.

Bikesharing and micro-mobility

For smaller distances, there is nothing better than bicycles! **Bikesharing** can turn out to be particularly convenient for inter-sites travels or to go to a meeting downtown (and avoid parking issues). Employees can also ride our bikes during lunch breaks.

An alternative is the **electric scooter**, that can also be introduced in your fleet. Perfect for urban travels!



Carsharing advantages

Discover the various positive impacts of this **shared mobility** on your fleet



Savings on your mobility budget

- Decrease by 30% of the size of your vehicle fleet
- 25% savings on your mobility expenses
- Rationalised travelling costs



Vehicle fleet management

- Maximisation of the size and typology of your fleet
- Better use of your service vehicles
- Access to different types of vehicles from a single platform



Quality and environment management

- Reduction of your carbon footprint
- Promotion of eco-driving
- Reinforcement of the reputation of your company among your customers and partners



An innovative company image

- Corporate social responsibility culture
- Collaborative behaviour
- 2.0 business showcase

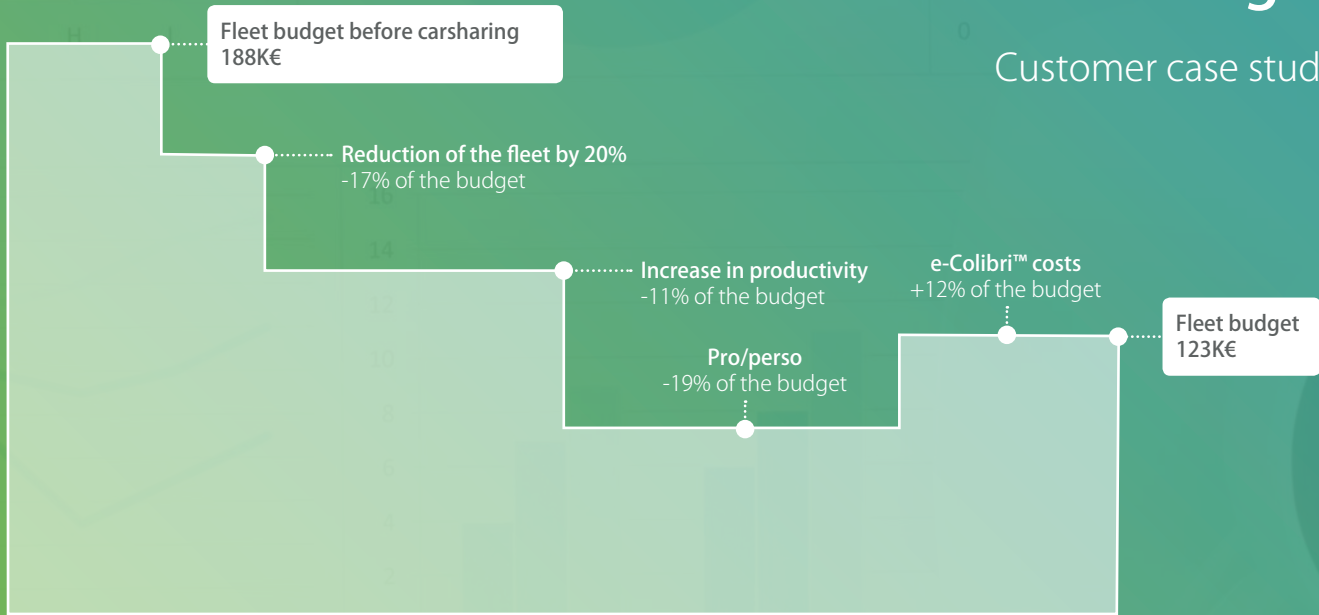


Time saving

- 24/24, 7/7 Self-service vehicles
- Vehicle reservation from the website or the mobile application
- An easy and pleasant customer experience

A 35% decrease on the fleet budget

Customer case study



Mobility Tech Green's onboarding

A guidance from A to Z

From the definition of your needs to the proposition of a fitted communication plan, discover the onboarding process. **Welcome to the Mobility Tech Green's family!**

The Carebox™ program

Mobility Tech Green offers its customers a genuine tailored approach of its carsharing service. The Carebox program goes way beyond the simple graphic adaptation, it guides every company or community in the development of its new travelling mode. The purpose is clear: turn our new customers into our partners for tomorrow's shared mobility.



IT developments

Our IT centre is at your disposal to perform tailored developments.



Mobility Management

A mobility manager will be dedicated to your project in order to manage the set up of your car sharing system. As a creative force, your mobility manager brings his expertise at the service of the good follow-up of your carsharing service.



Communication assistance

Our communication service assists you before and after the launch of your carsharing for its internal promotion.



Collective or individual training

Our support team assists you in the training of the e-Colibri™ system. You can benefit from various types of training depending on your needs: webinars, on site or remotely.

Promoting tools for your new mobility service



Flyers

We supply templates of printed documents for the communication to your employees.



Email marketing campaigns

Service launching and subscription newsletter templates are at your disposal to quickly reach out to your future users.



User's journey video

An explanatory video introducing the booking process of a carsharing vehicle is sent to you in order to simplify the integration of the service.



Text message campaigns

Text message campaigns can be particularly useful to communicate on the launch of your service or on the training sessions.



Satisfaction surveys

Satisfaction surveys can be implemented on a regular basis to collect user evaluations and adjust your service.



Vehicle branding

Thanks to that option, you can go further in the customisation of your vehicles for a better visibility of your new carsharing service.

A team at your service

Mobility Tech Green puts at your disposal the knowledge and the counselling force of a team covering every field of expertise of professional mobility.

Technical department Specific developments

Commercial department Daily assistance

Marketing & communication Promotion tools for your service

Head of operations Deployment and installation of your vehicles

Support department Training and phone assistance

Mobility Tech Green's offers

Three offers for your mobility

In addition to its signature option, **e-Colibri™ Success**, Mobility Tech Green has a range of offers to always guarantee the perfect solution to answer your mobility challenges.



BEST SELLER



e-Colibri™ Success

The best of B2B carsharing,
tailored to your image

e-Colibri™ box **on-board kit**

Personalised software platforms

Back office
Front office
e-Manager™ mobile application

Specific developments possible to
guarantee a **tailored service.**



e-Colibri™ Essentials

The **packaged** B2B
carsharing offer

e-Colibri™ Essentials box

Standardised software platforms

Back office
Front office
e-Manager™ mobile application

A quickly set-up **packaged offer**.



e-Colibri™ Freemium

Corporate carsharing,
for free

A **free access** to our platforms during 3 months

Standardised software platforms

Back office
Front office
e-Manager™ mobile application

Try **without engagement** our carsharing solution*.

*Under eligibility requirements

References

Our customers are our best ambassadors



“ We have been working with Mobility Tech Green since 2013 in order to experiment carsharing with our co-workers. This partnership is very successful. Today, more than **3,000 vehicles of our fleet** are used in carsharing. The users like how simple it is to book a vehicle. Thanks to e-Colibri™ we can also **offer the use of the vehicles on evenings and weekends**, as well as **carpooling**. ”

Jean Zermati, Orange



Trophées L'Automobile & L'Entreprise 2018

1st prize
Service of the year



Label FrenchWeb 500
Year 2019

184th place in
the rankings

Rewards highlighting
Mobility Tech Green's
expertise



CES Innovation Awards
2020

Vehicle intelligence &
transportation



Technology Innovator
Awards 2019

Corporate Mobility
Innovation Award

Frequently Asked Questions

Know everything about our solutions

What are the advantages of the carsharing system compared to a numeric key box?

From a logistic point of view, the carsharing service helps to **secure** even more the access to the vehicle's keys while keeping them in a connected key box inside the vehicle. Users do not need to make a detour before and after their reservation: they can go directly to the booked vehicle with their card or smartphone in hand.

Can vehicles be booked on evenings and weekends?

Thanks to carsharing, and more particularly the **professional/personal option**, you can open the vehicles to reservation outside of the working hours. A perfect way to guarantee the return on investment of the service, maximise the use of your vehicles while offering this advantage to your employees!

Do I need to change the vehicles of my fleet to benefit from the carsharing service?

Our on-board e-Colibri™ kit can be installed on a wide majority of vehicles: no need to renew your fleet to launch into it!

Help Centers

Mobility Tech Green puts at the disposal of fleet managers an online help platform as well as a help center for final users to guide them in the use of our mobility solutions.

They can find:

- a presentation of **the functionalities**
- all of the **webinars' replays**
- video **tutorials**
- **documentation**
- a **mutual assistance forum**

