

MAGNA. 
GLASKERAMIK

PRESENTATION
about us | material | projects

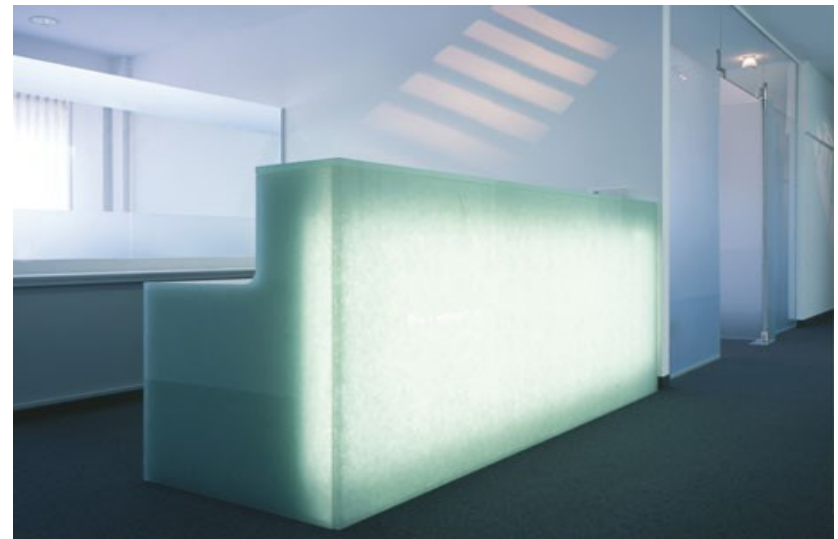
What is MAGNA Glaskeramik®?

MAGNA
GLASKERAMIK

Glaskeramik® UPCYCLING - from industrial waste glass to a sustainable material for facades and interior design.



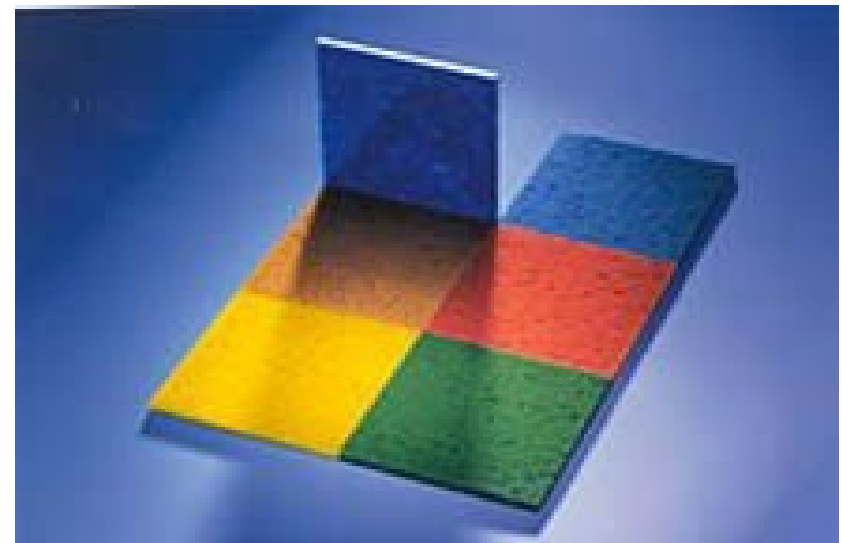
Other meanings of „Glaskeramik“



Patented idea by Schott

MAGNA
GLASKERAMIK

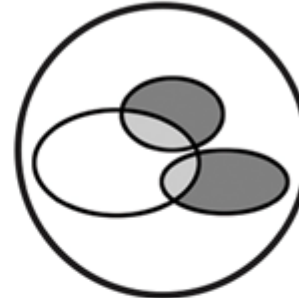
SCHOTT
glass made of ideas



Sustainability



**Translucent
look**



**Quality from
Germany**



**Comprehensive
system solutions**



MAGNA. 
GLASKERAMIK

BASICS
Production

Factory Teutschenthal – eastern Germany

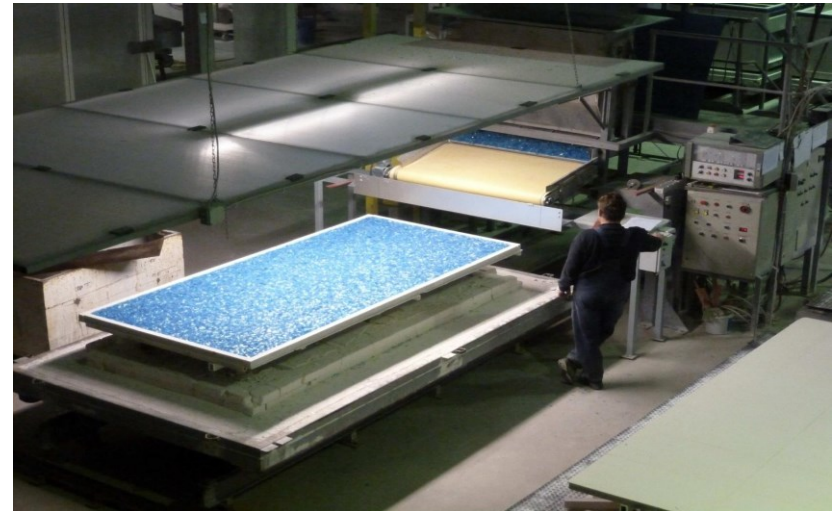
MAGNA
GLASKERAMIK



Production step 1: breaking glass waste



Production step 1: breaking bottle glass waste



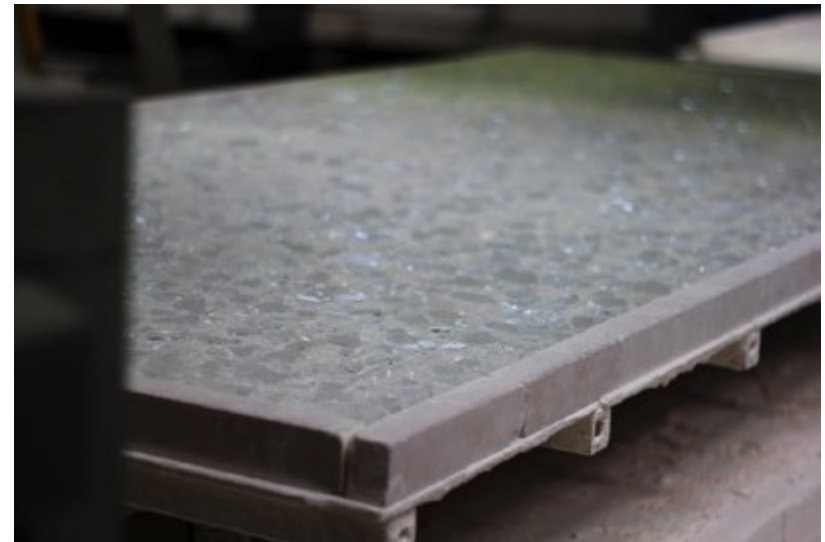
Production step 2: filling of cullets into wagons



Production step 3: leveling and sorting of cullets



Manual glass cullet sorting and quality check



Recycled solar panel glass ready for oven sintering



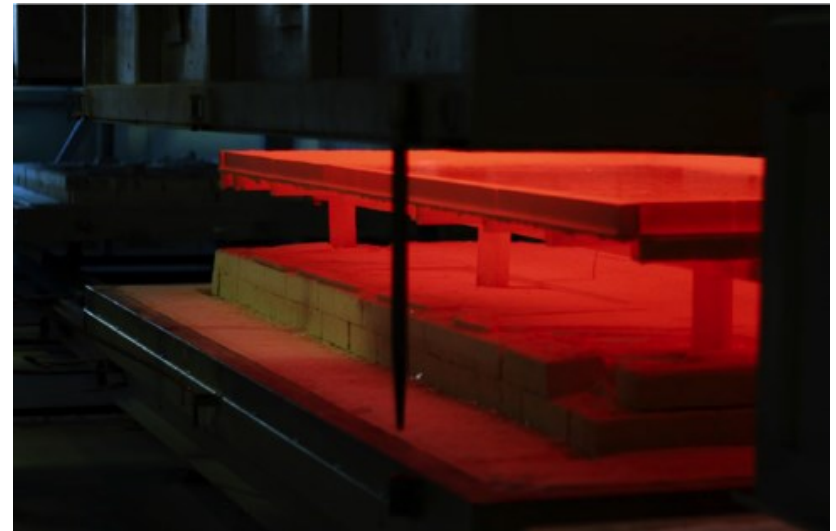
Production step 3: leveling and quality check



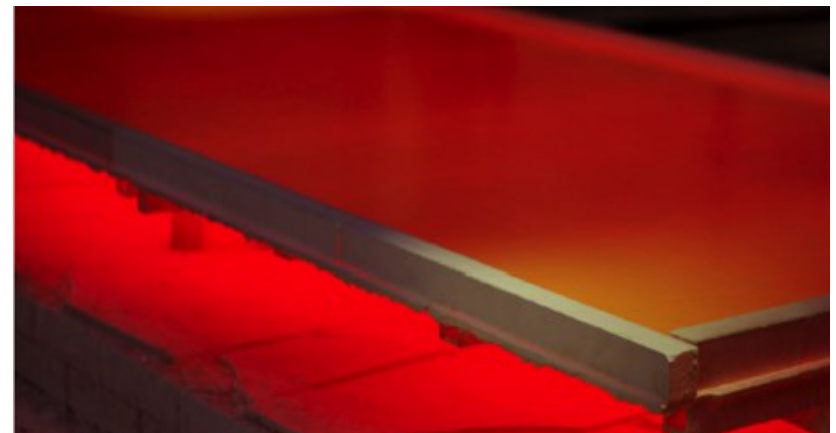
Production step 4: oven sintering for 4h



Impression from individual slab oven sintering



Sintering takes 4h/slab and perfect cooling to avoid any tensions within the material another 16h/slab



Production step 5: cooling for 16h

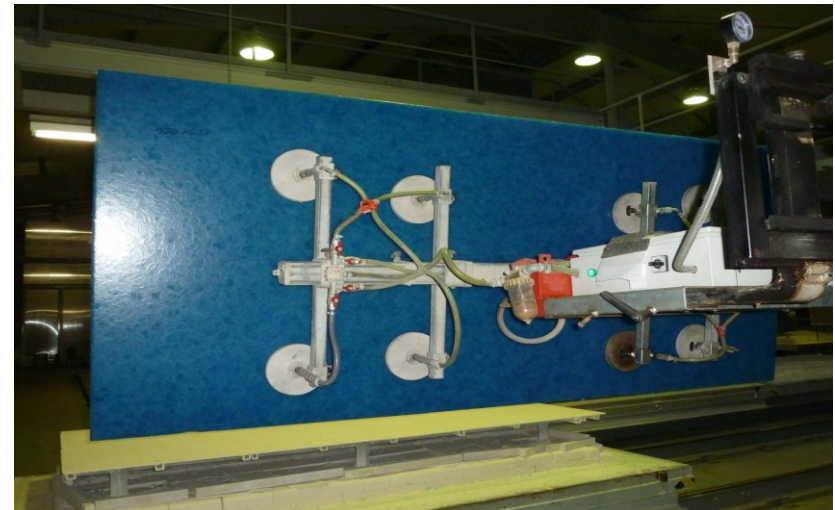
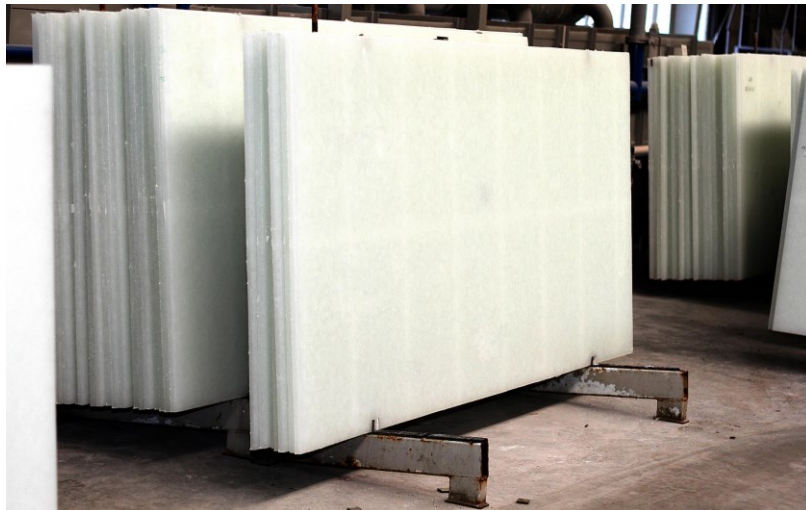


Production step 4/5: monitoring quality



Each slab is being monitored individually every 10 seconds during production process as well as being checked visually for quality after cooling and can be traced back up to recycled glass waste source

Production: finished slabs from two ovens

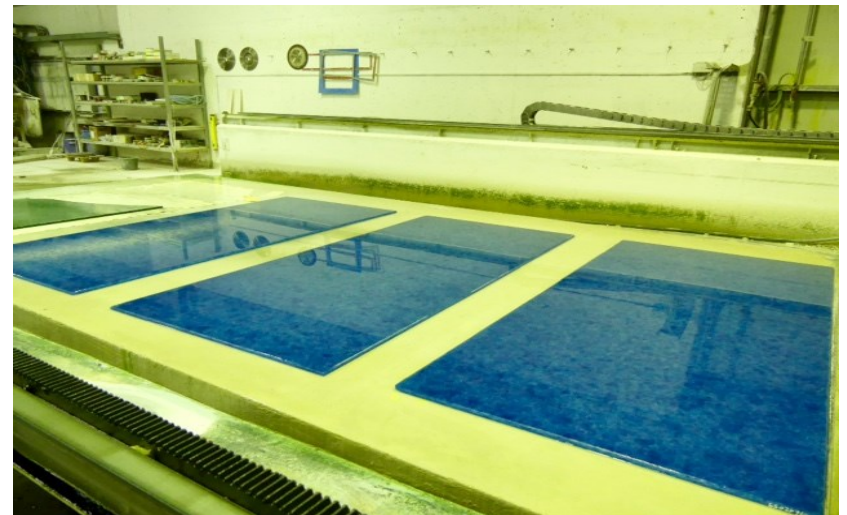
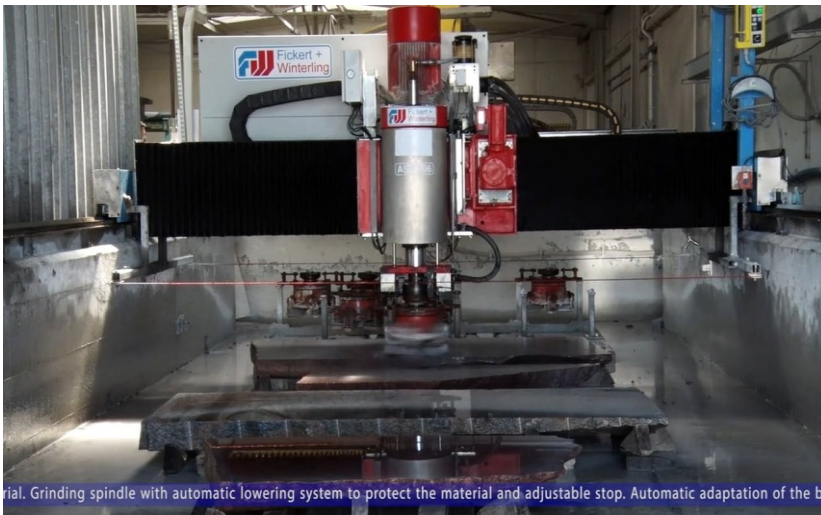
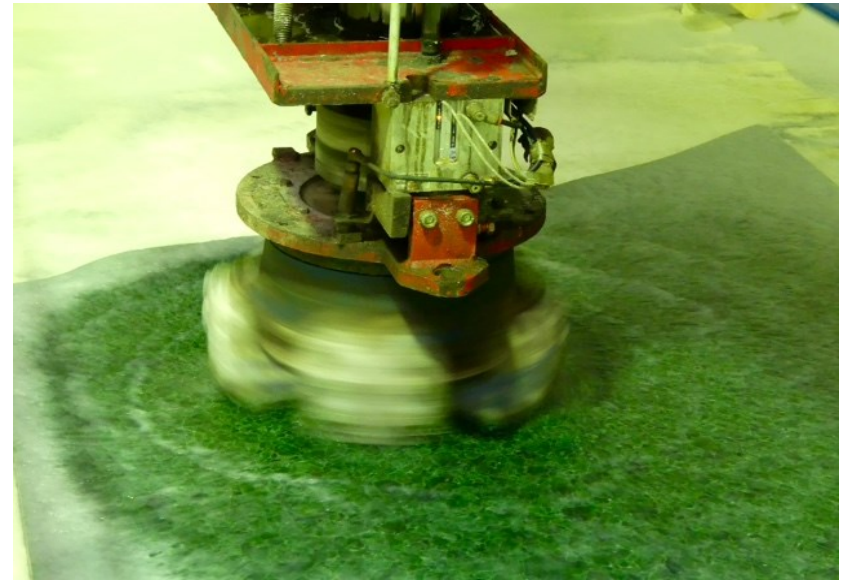


Processing of slabs – calibration to final thickness

MAGNA
GLASKERAMIK



Processing – polishing

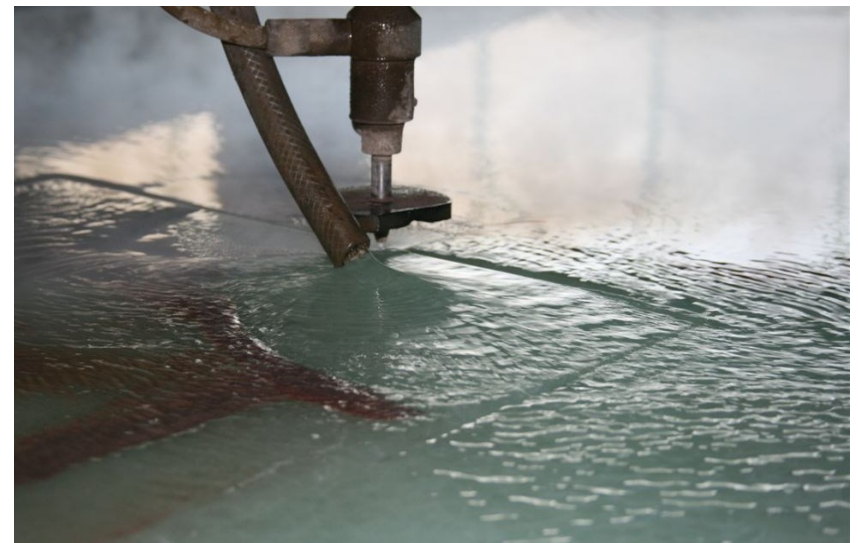
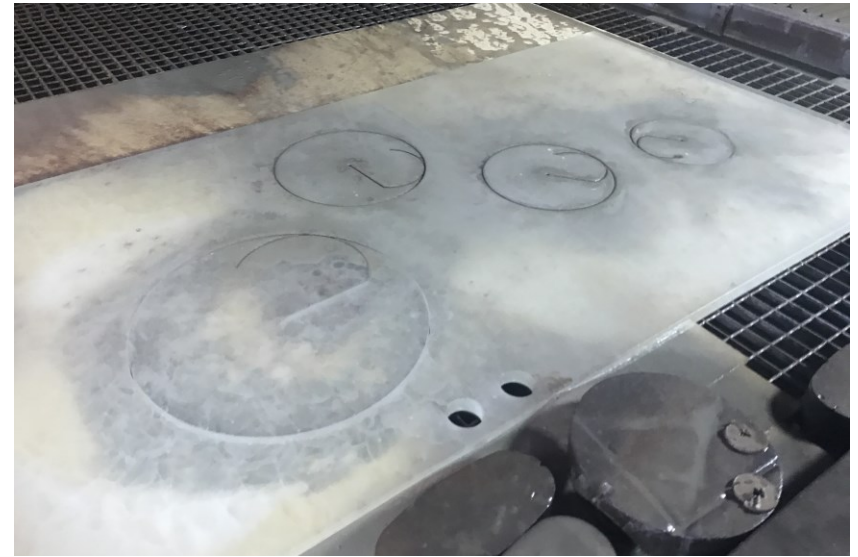


...rial. Grinding spindle with automatic lowering system to protect the material and adjustable stop. Automatic adaptation of the br

Processing: Bridge Saw - cut to size



Processing: Water jet – cut to size





Waterjet and CNC cutting



Diamond grinding blades with water cooling



3 different surface finishes



PATINATED

Finish with texture and high relief for surfaces whilst offering low glare reflectivity and low scratch-ability.



POLISHED

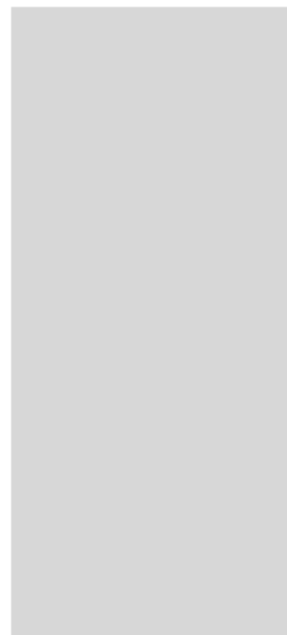
Polished finish gives the Glaske-ramik colours a perfect reflection. The transformation from the 2D into 3D effect shows off the crystalline structure even better.



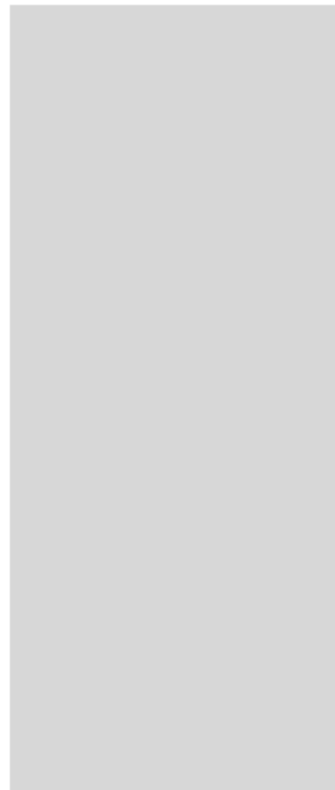
MATT

Absolute matt finish. Extremely resistant, silky smooth and perfect for business applications.

2 different slab sizes



280 x 125 cm
patinated,
polished*, matt*



350 x 150 cm
patinated,
polished*, matt*



* Polished or matt finishes can have smaller sizes, e.g. 270 x 120 cm or 340 x 140 cm.

Varios thickness

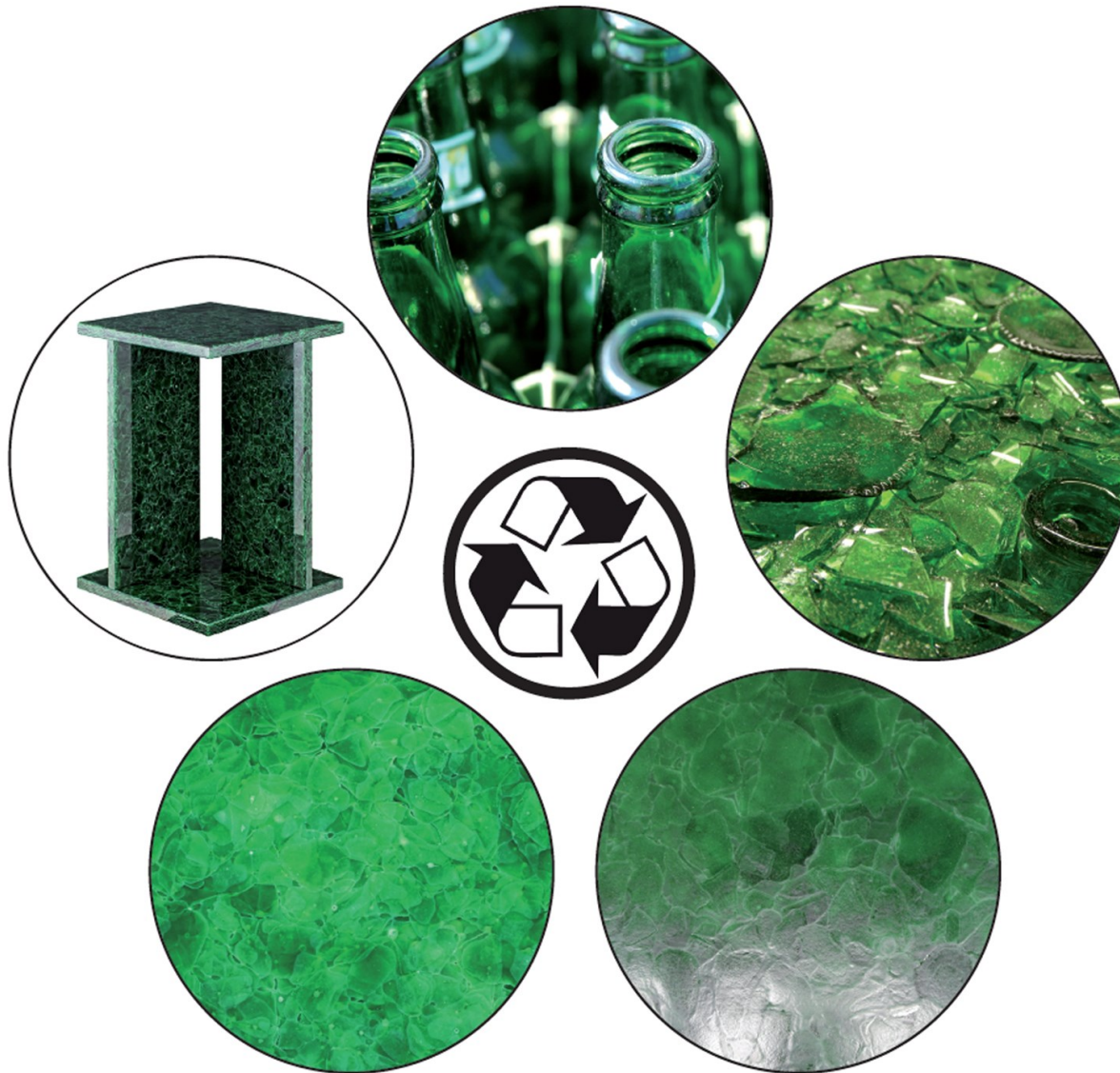
UPDATE

16 mm		Special production
20 mm		Standard
30 mm		Special production



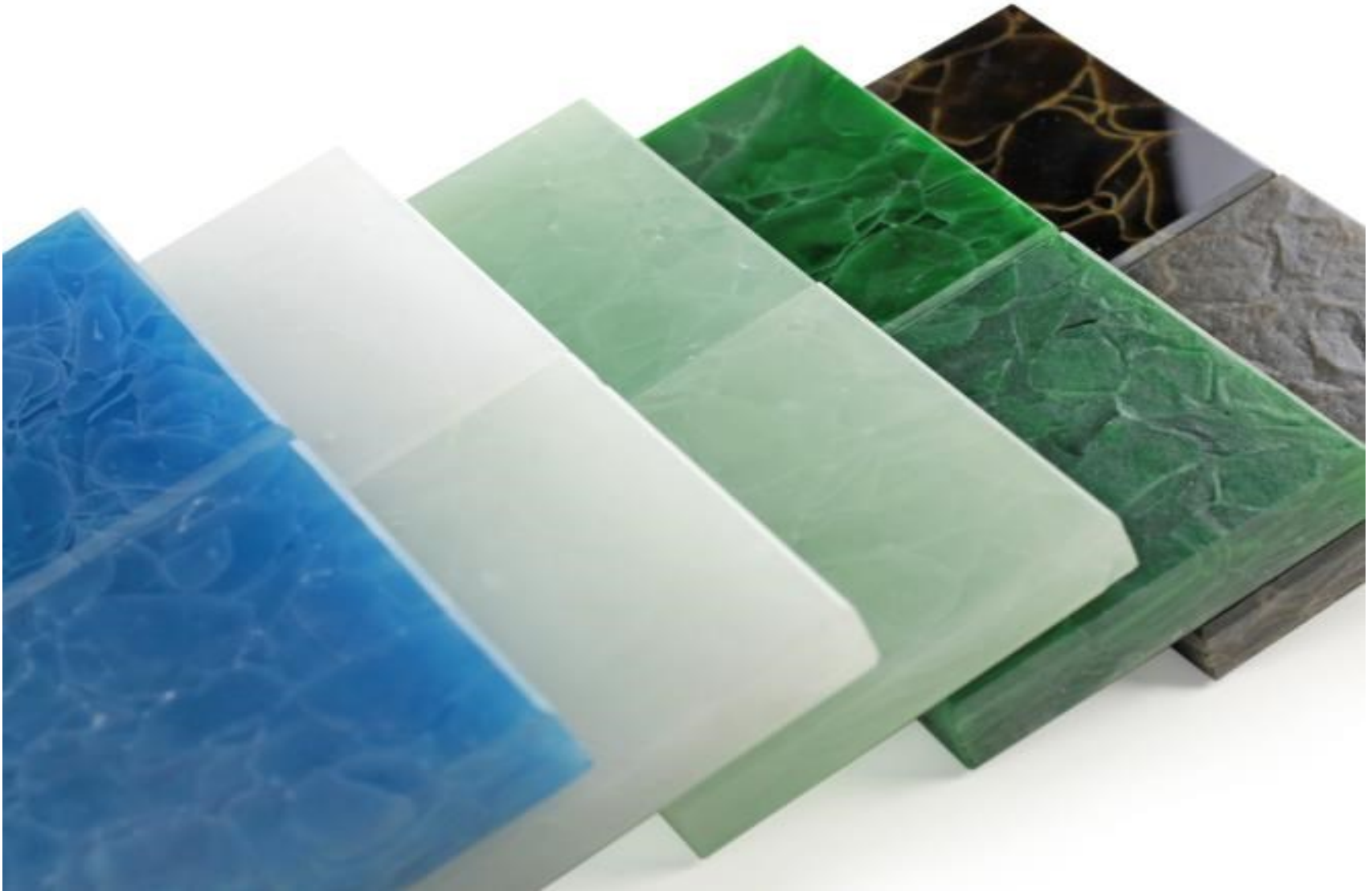
BASICS
Sustainability

Sustainability principle

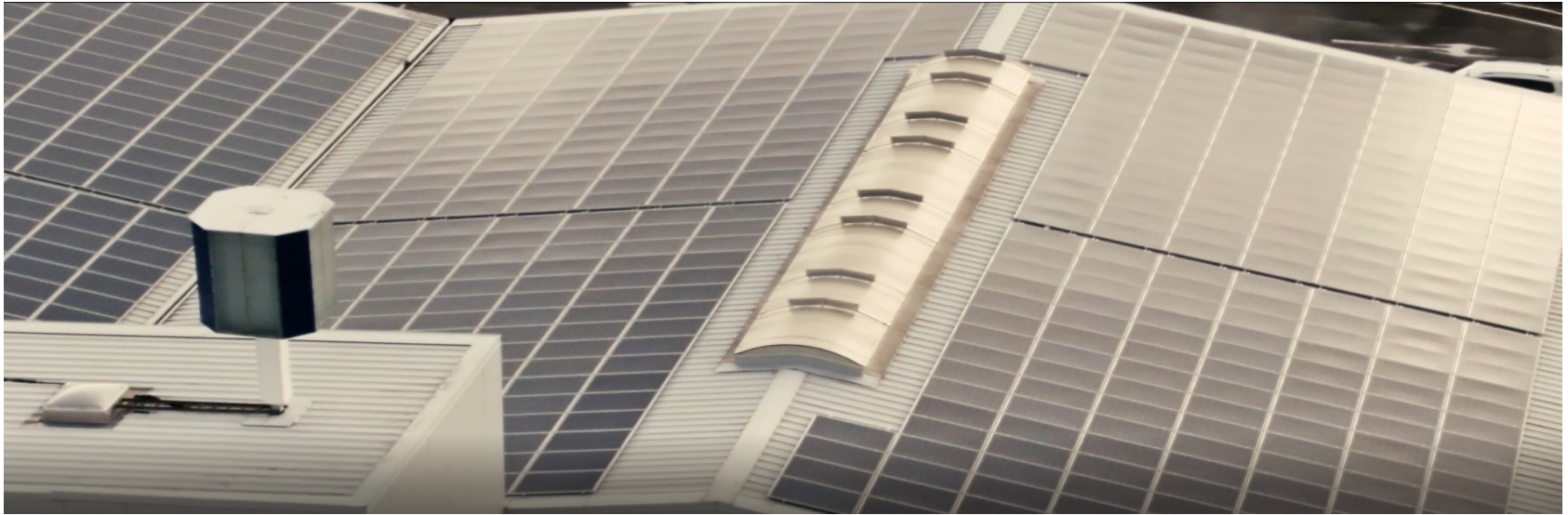


Sustainability principle

MAGNA
GLASKERAMIK



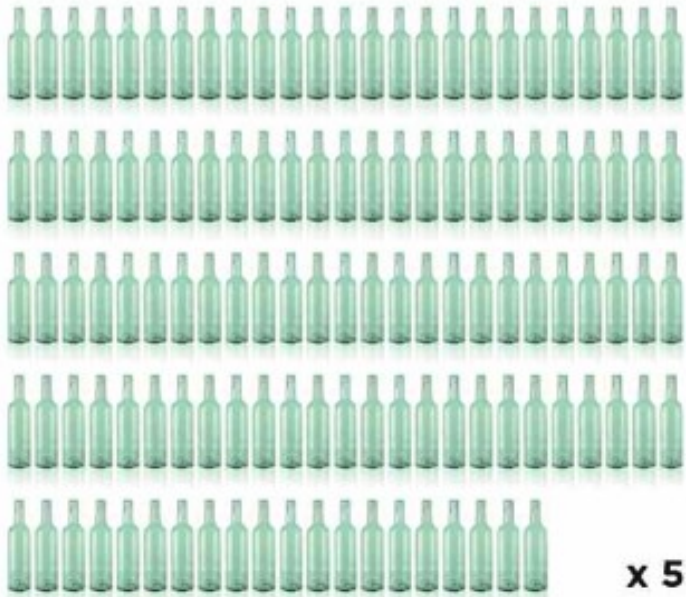
Sustainability principle – solar energy and water



Part of the electricity is produced by the solar system. Water used in production is recycled and used several times.



Our recycling principle:



= 1 Panel



Our Value:

Our crystallized Glaskeramik is sustainable thanks to 100% upcycled glass.



Sustainability certificates





MAGNA. 
GLASKERAMIK

BASICS
Colours

Official Colour Range

ICE NUGGET: made from recycled 6-8mm pieces of industrial white glass waste



Official Colour Range

POLAR WHITE: made from waste of ultra white glass for solar panels



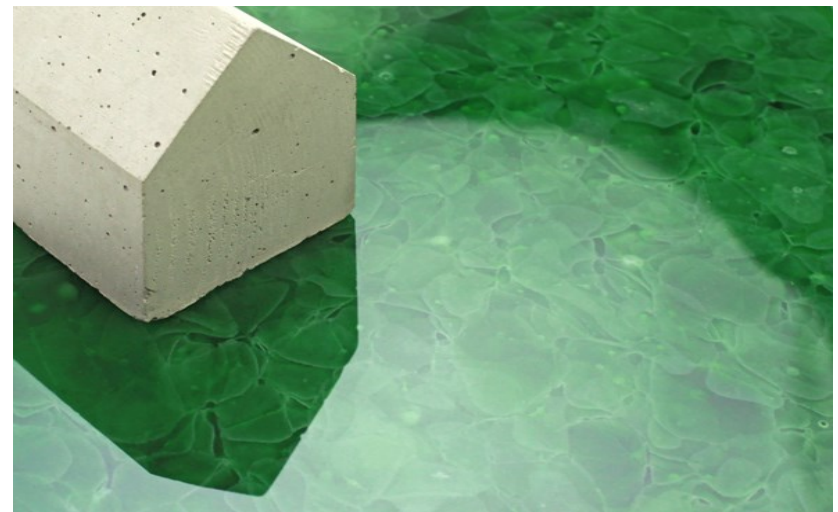
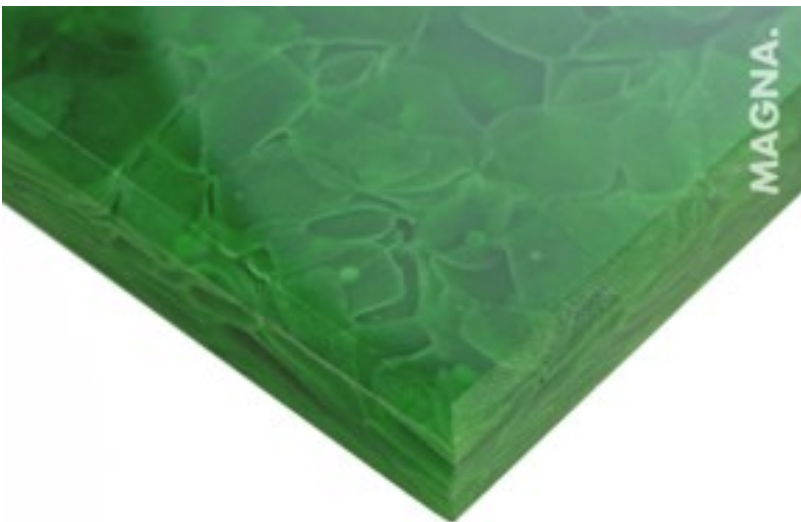
Official Colour Range

JADE: made from recycled float glass (industrial basic windows glass)



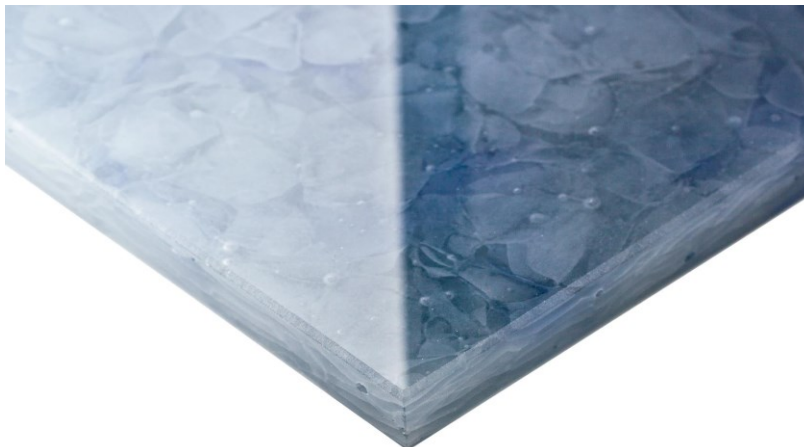
Official Colour Range

GREEN: made from recycled green beer glass bottles (Heineken)



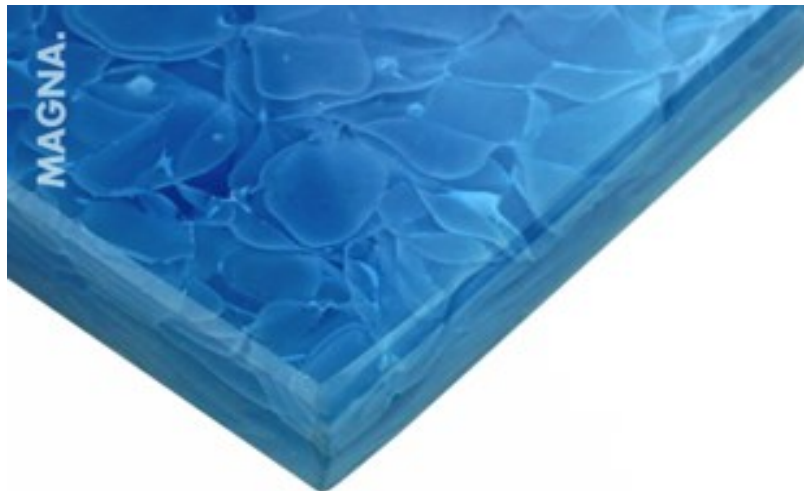
Official Colour Range

BLUE SKY : made from recycled light blue mineral water bottles



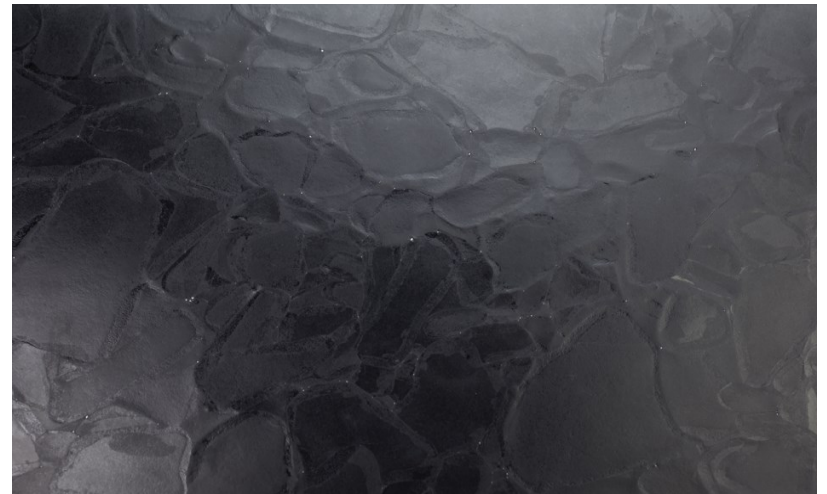
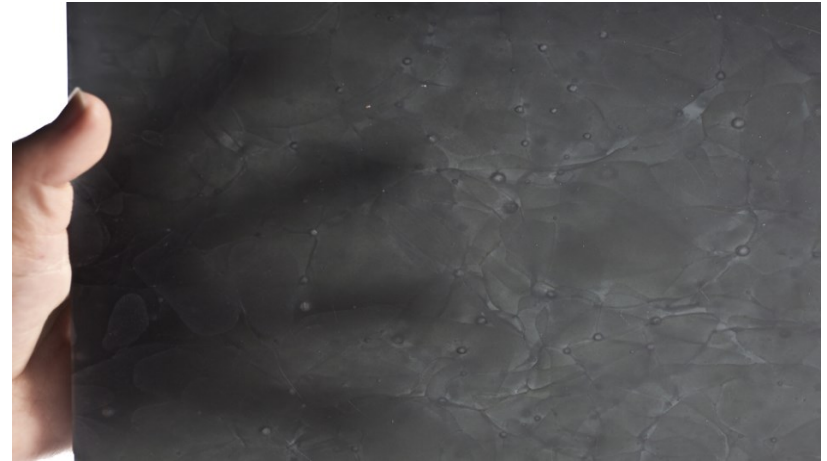
Official Colour Range

OCEAN BLUE: made from recycled sparkling water bottles

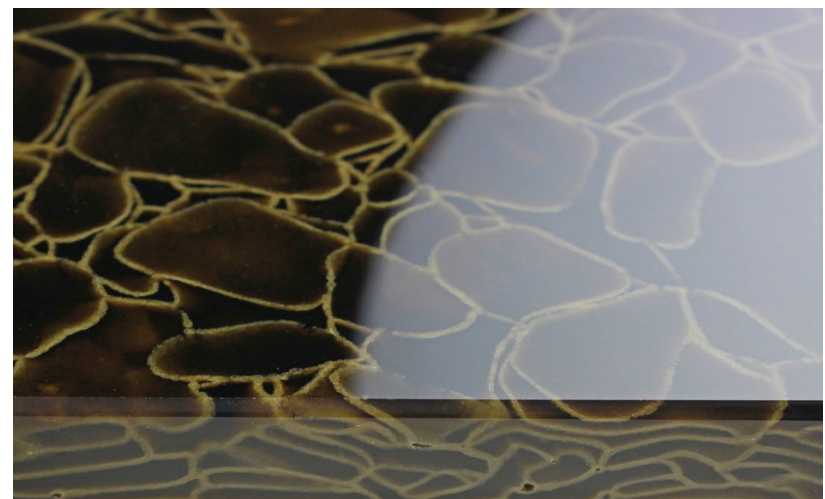
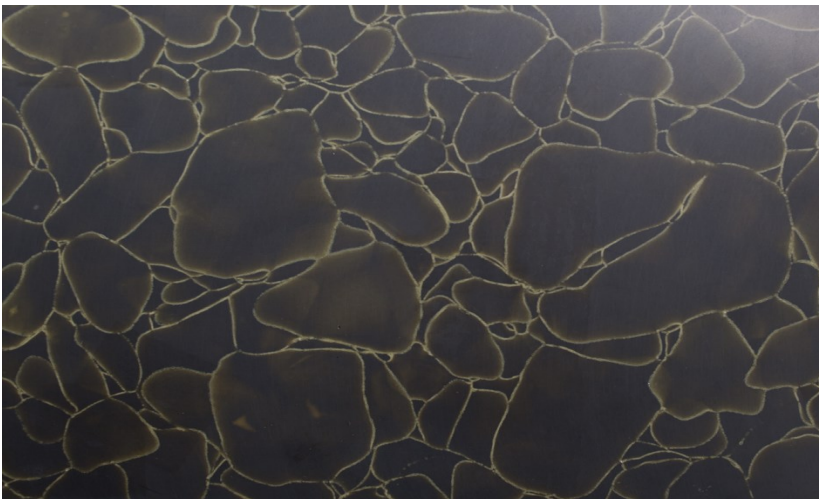
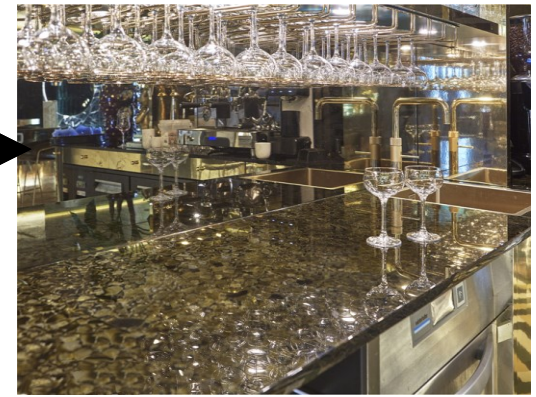


Official Colour Range

BLACK : made from recycled sun protection tinted glass – float grey



CHAMPAGNE BROWN: made from recycled beer, champagne and sparkling wine bottles



Special Colours

- Adding colour pigments to fine grain
- + semi liquid production phase
- = individual colours /shapes and pattern in slabs possible
- Substitution for Onyx, Alabster and Quartz in exterior application
- small MOQ



MAGNA. 
GLASKERAMIK

BASICS
Features

Anti-shatter film/foils

- applied on the back of material – invisible
- increases contrast of polished surface
- used in public areas if safety glass breakage behavior is necessary
- mostly used in shower or partition walls
- can be glossy, matt or colored
- foils can be cut in any shape



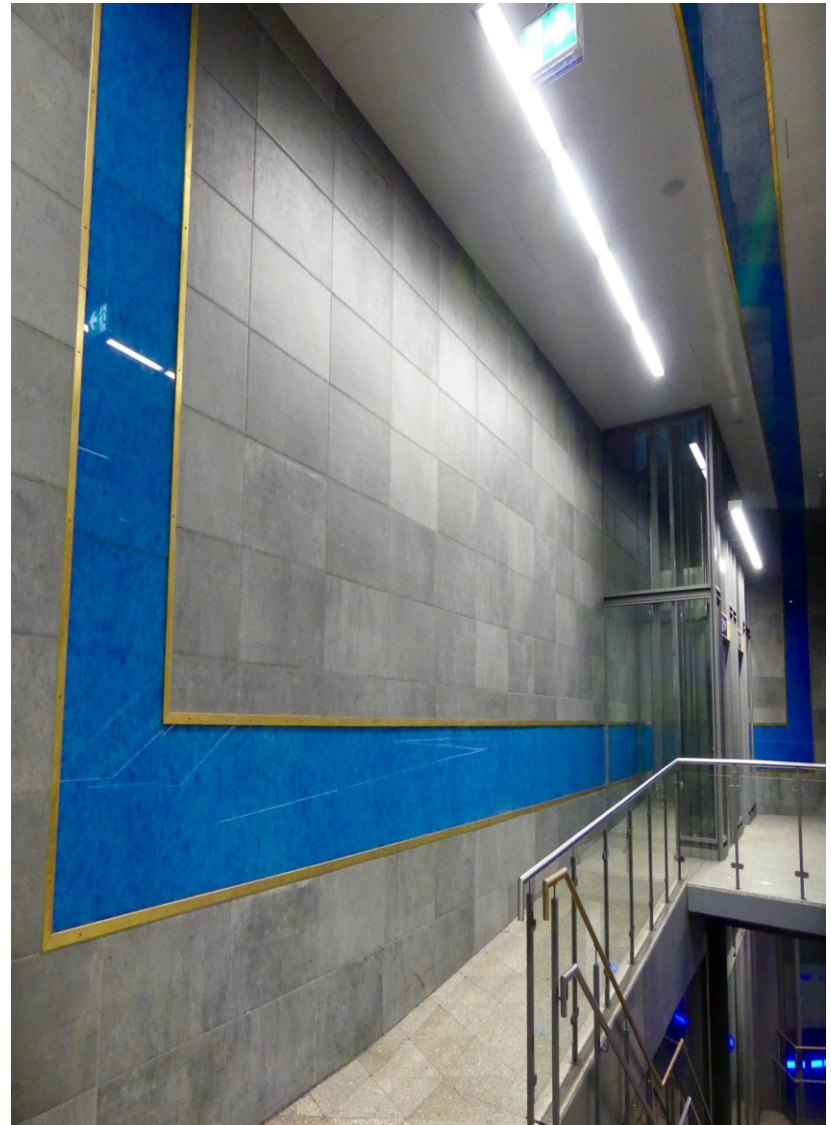
Anti-shatter varnish - protection laquer

- applied on the back
- used in public areas for exterior use
- used in public areas if safety glass breakage behavior is necessary
- Easy application – cheaper and easier to apply than films
- Varnish can be felt on backside surface application only if not directly touchable/visible



Full safety glass lamination

- Backside laminated safety glass with PVB or EVA technology
- Normally 16mm Glaskeramik + 1.5mm PVB + 6mm toughened glass
- Backup at public places, overhead glazing, balustrades ,railings, stairs
- Makes Glaskeramik structurally useable



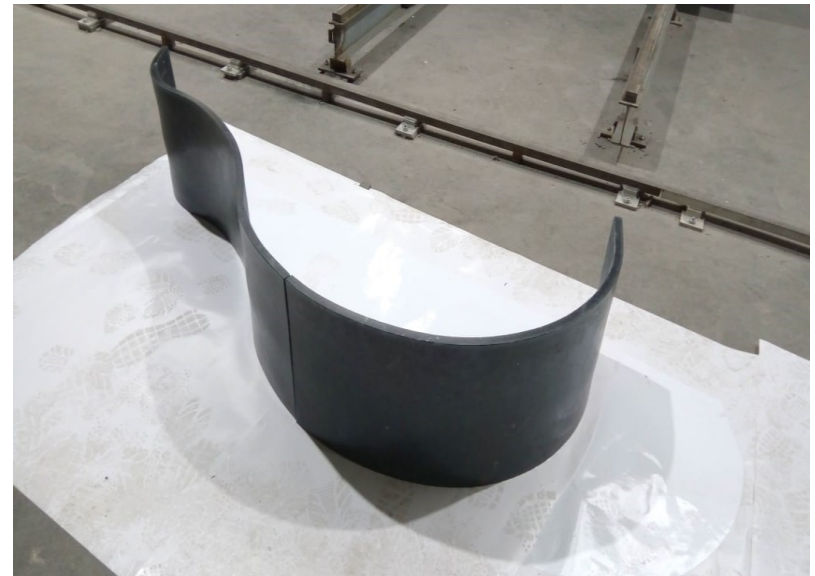
Stairs with Laser Grip for slip resistance and safety glass lamination



Material Features – Bending/Curving

Completely individual forms possible

- Gravity bending - Process works only with heat and self weight of material
- **Individual moulds**
- Possible produce forms on customer request, even 3-dimensional shapes
- MOQ = 1, quick and easy



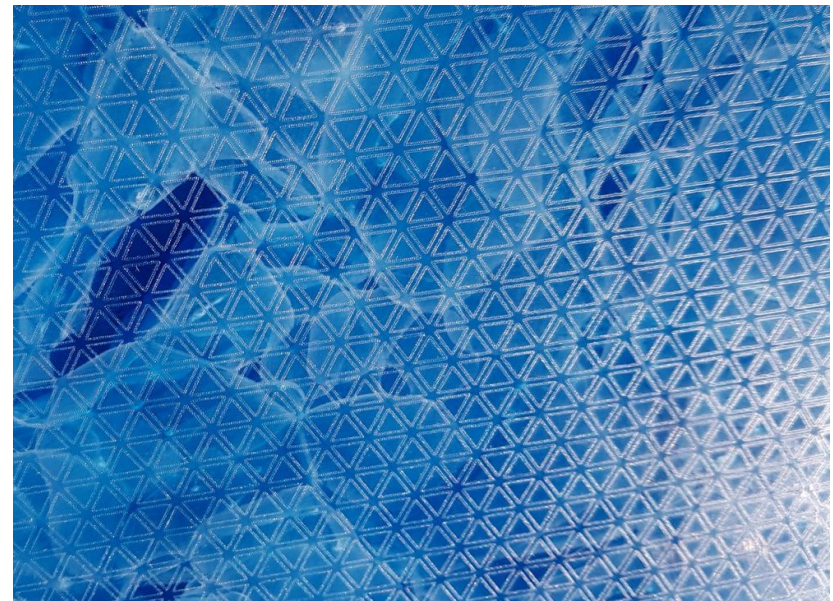
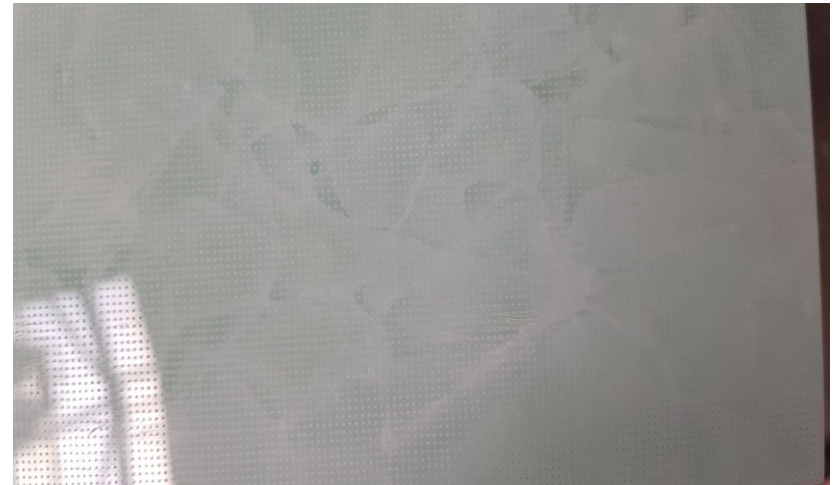
Material Features – Bending/Curving

different shapes



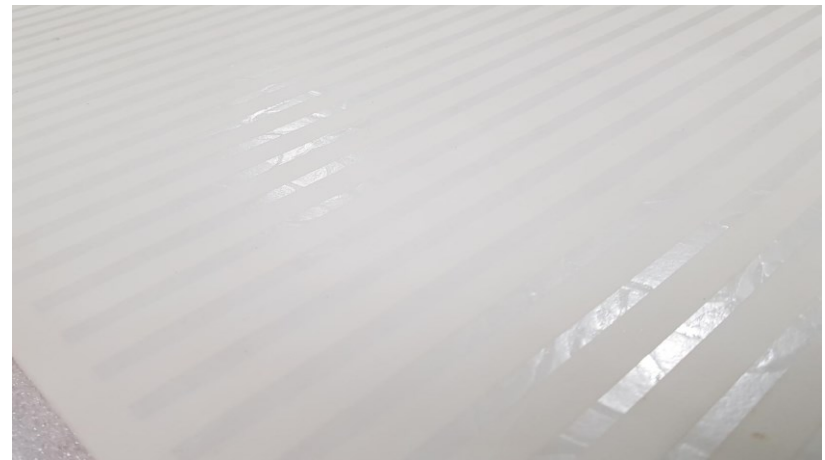
Laser Grip Flooring and Stairs

- possible on all surfaces
- Slip resistance rating up to R10
- barely visible on the surface
- Laser pattern can be customized
- stairs, floor and design objects



Sanblasting for slip reistance or design pattern

- compressed air blasting with solid abrasive (sand)
- only superficial editing
- any shape/pattern possible
- looks slightly frosted
- cheap and easy processing
- can be done locally



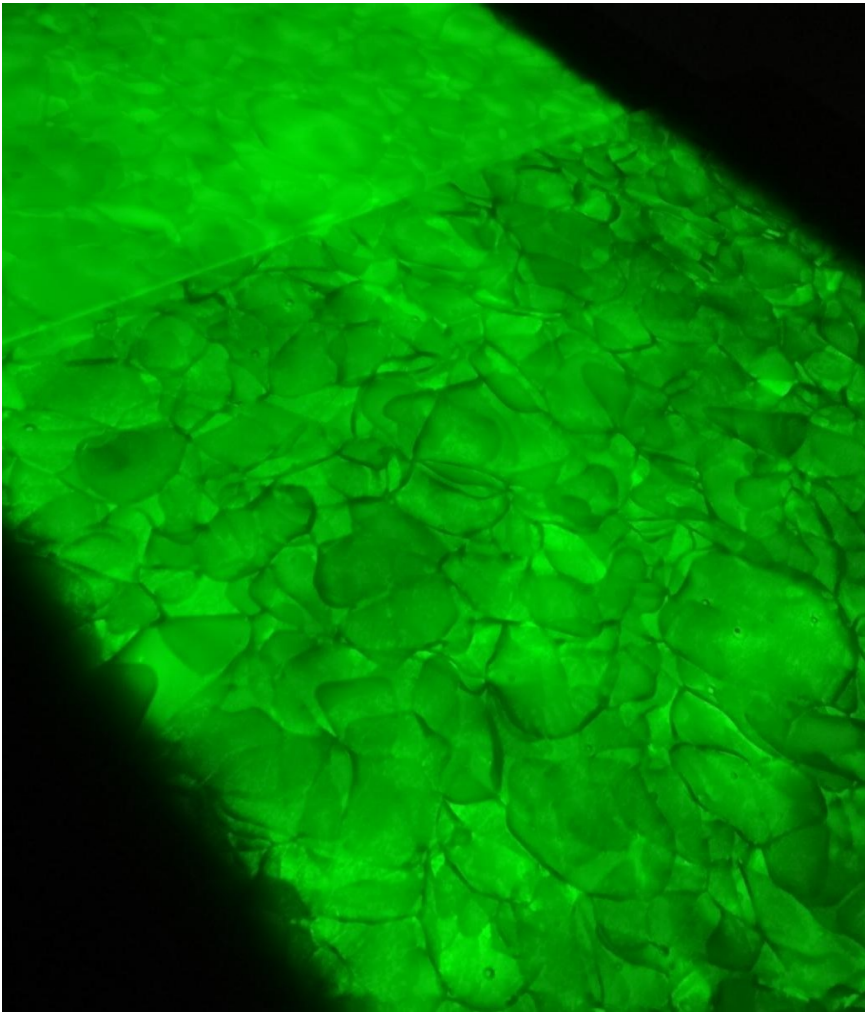
Material Features – engraving logos/letters

Engraving letters by CNC or sandblasting – individual design possible



Material Features – backlight

LED Panel - warm and cold white + RGB features



Material Features – backlight

Glaskeramik = excellent diffuser of light



Material Features – edge options

Miter vs. 2+2cm

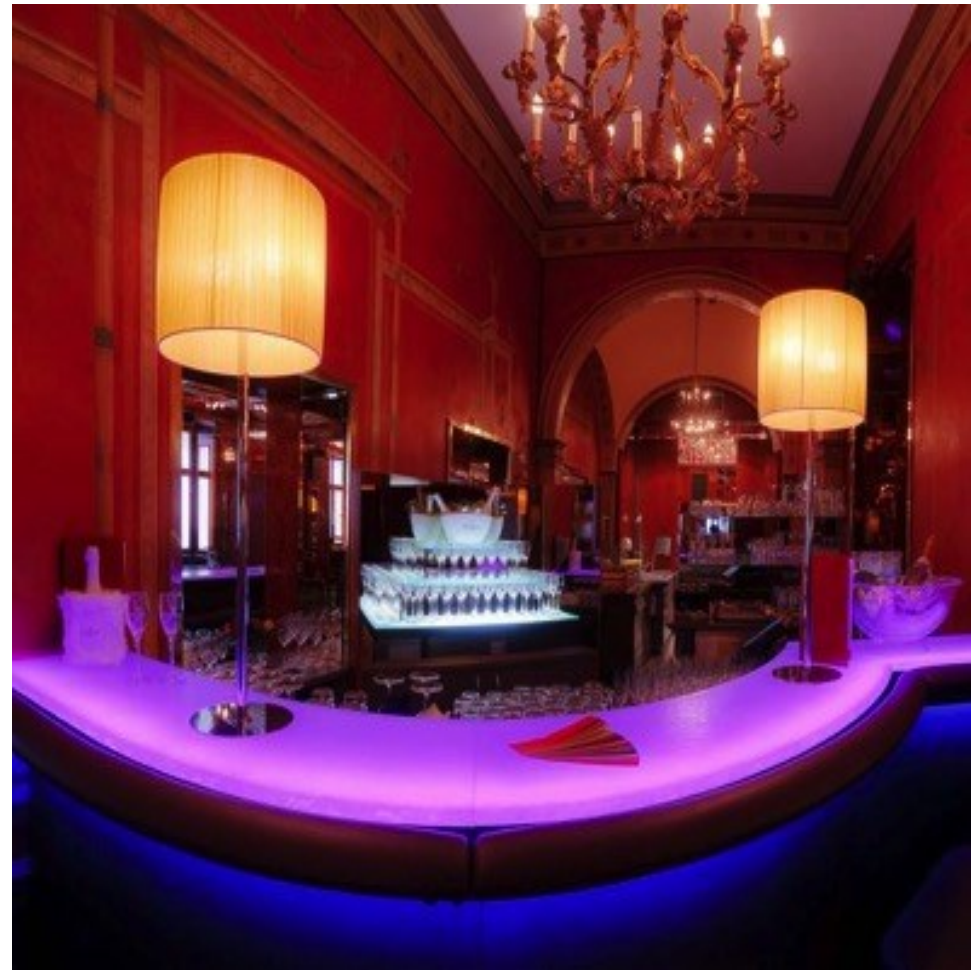
- Mitre cut glued aprons possible
- Alternativ 2cm polished edge
- Alternative 2+2 or 2+2+2cm for bigger edges with standard slab thickness
- 3cm slabs possible on request (longer lead times)



MAGNA. 
GLASKERAMIK

APPLICATION
Counters and Tables

Casino Vienna: bar surface in Polar White patinated illuminated
| Austria



Material Applications - illuminated Counter

MAGNA.
GLASKERAMIK

Disco Star backlit bar by popup Ocean Blue patinated | Bremen
| Germany



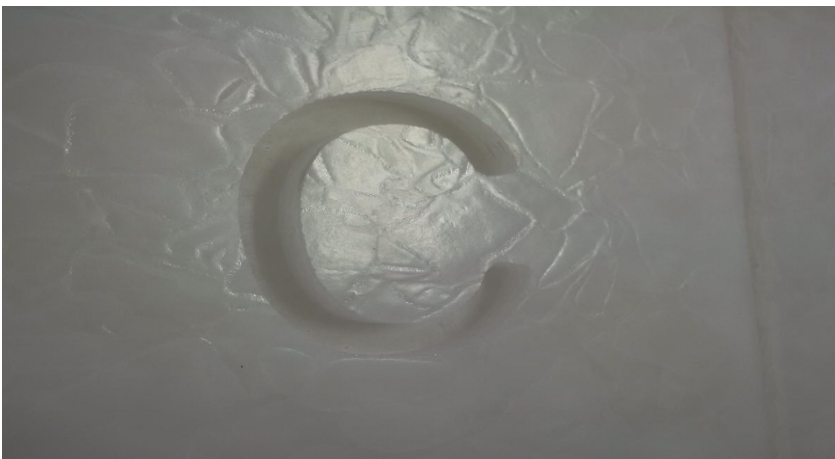
Material Applications - illuminated Counter

Reception Desk Clear polished Naturstein Halbach GmbH –
sandblasted Company logo



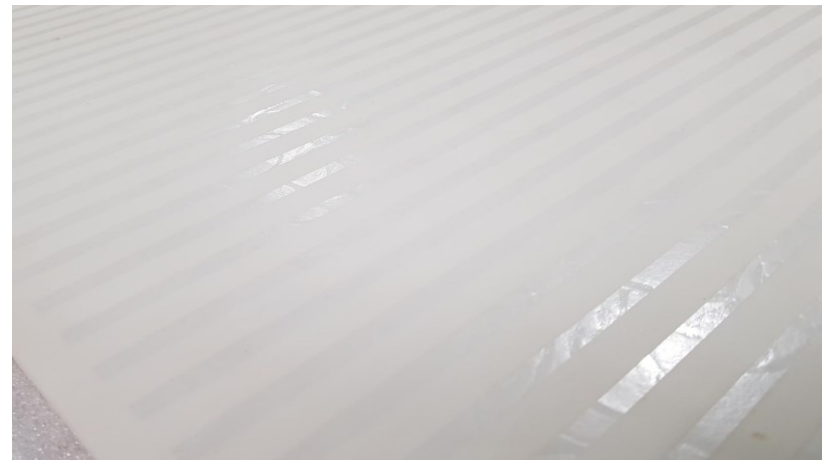
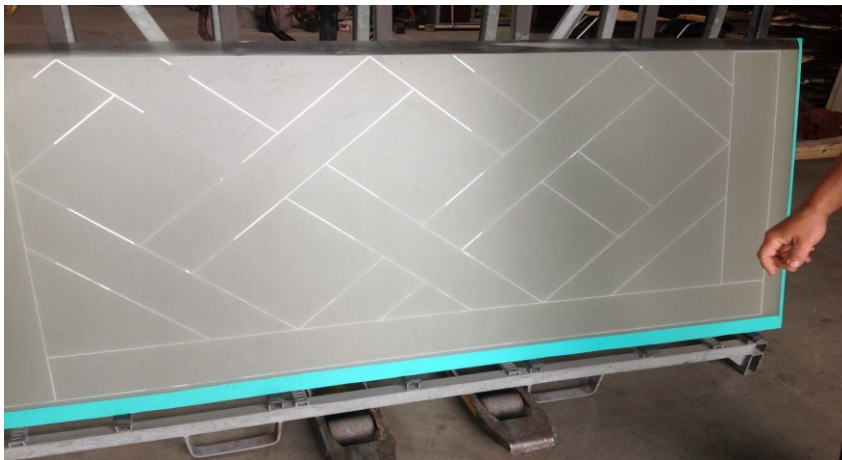
Material Features – engraving logos/letters

Engraving letters by CNC or sandblasting – individual design possible



Sanblasting for slip reistance or design pattern

- compressed air blasting with solid abrasive (sand)
- only superficial editing
- any shape/pattern possible
- looks slightly frosted
- cheap and easy processing
- can be done locally



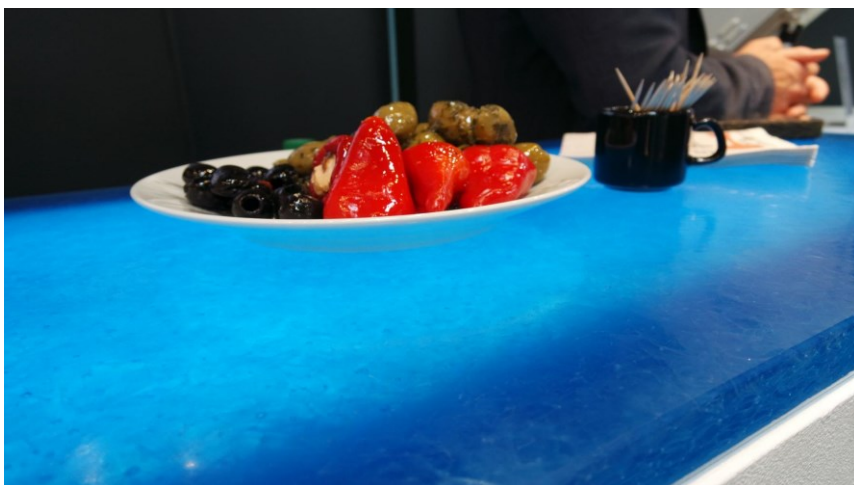
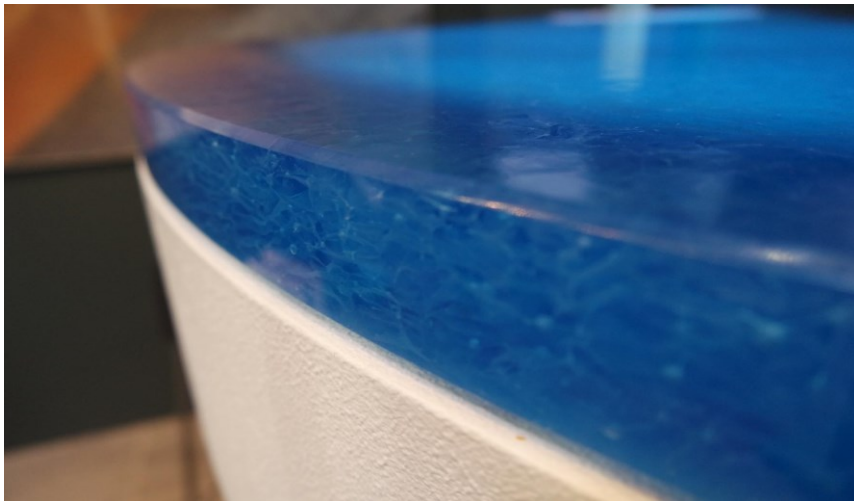
Material Applications - illuminated Counter

Reception Desk Blue Sky patinated Almgranit Rheinfelden | Germany



Material Applications - illuminated Countertops

Rohde show counter @Glasstec Ocean Blue patinated | Germany



Material Applications - illuminated Counter

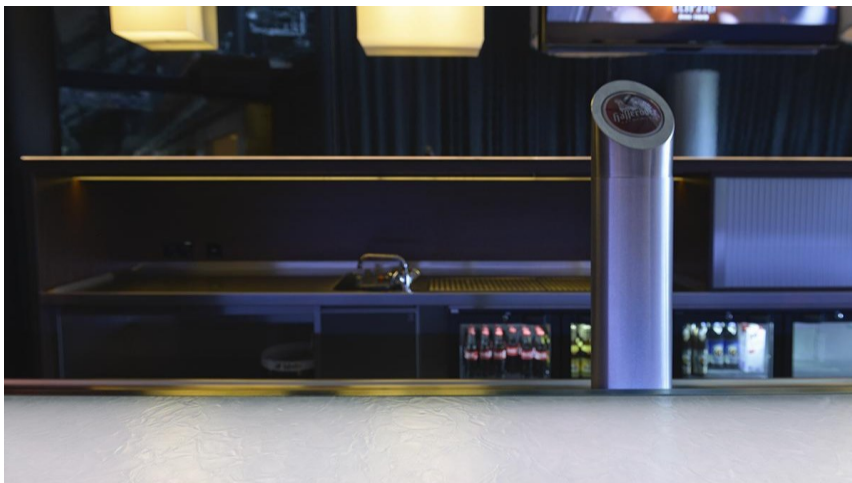
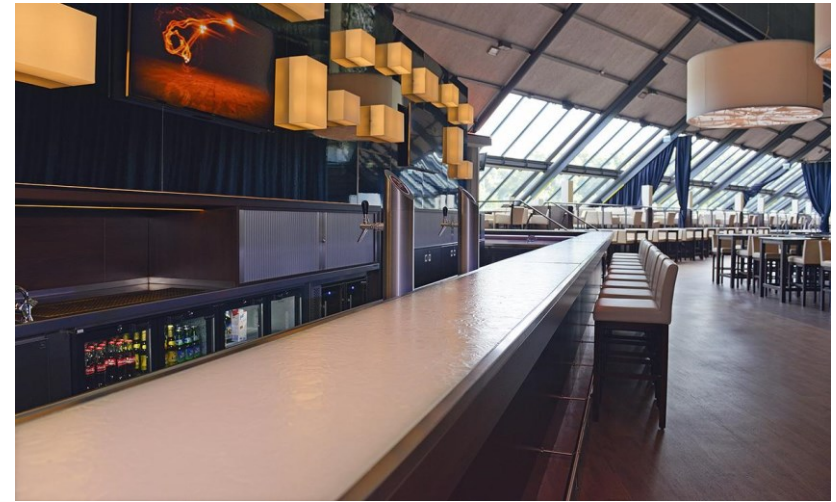
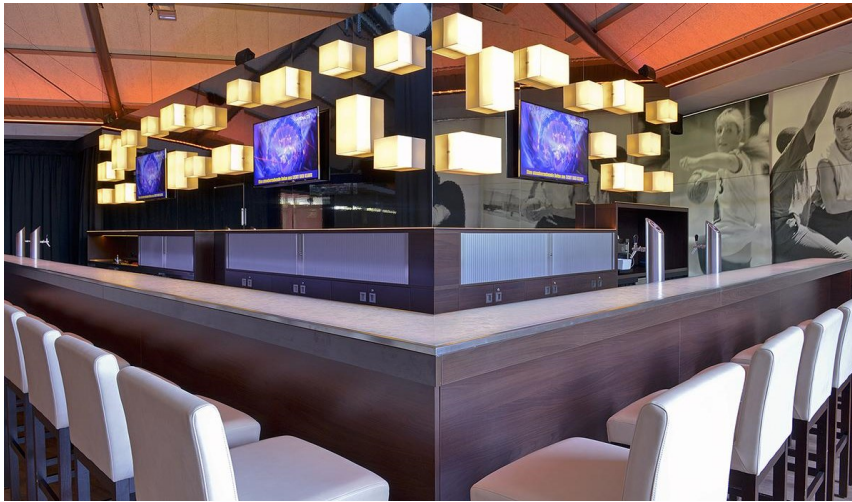
MAGNA
GLASKERAMIK

Reception Desk Pharmacy RAM architects Polar White patinated
Munich | Germany



Material Applications - illuminated Countertops

Bar VIP Area Arena Leipzig Polar White patinated Leipzig | Germany



Material Applications - - illuminated Counter

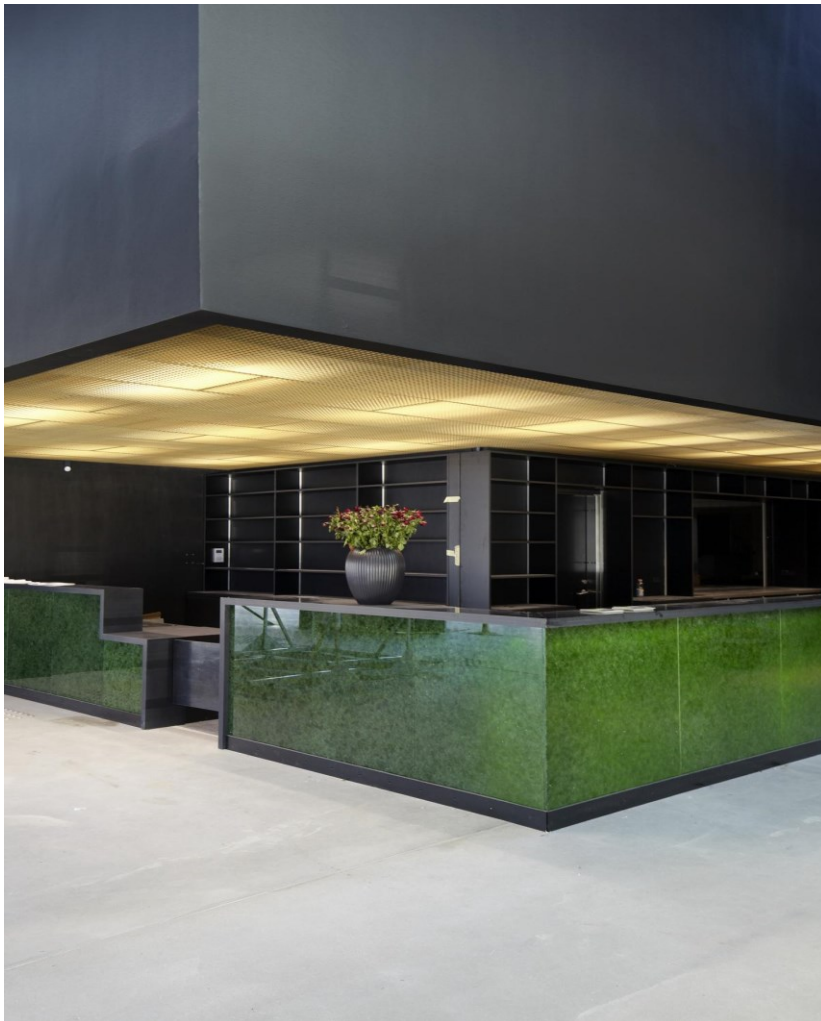
MAGNA
GLASKERAMIK

Reception desk: Polar White illuminated for Lomax Ltd. | London



Material Applications - illuminated Counter

Concert House Aarhus Green polished | Denmark



Material Applications - Countertops

Corney & Barrow Wine Purveyors bar Beer Brown patinated
| London | UK



Reception desk Pradus Jade patinated | Germany

- different angles
- produced according to technical drawings
- gluing without joint possible



Material Applications - Countertops

Herman de Bleijker Restaurant 'Goud' Champagne brown and Green polished | Rotterdam | Netherlands



Material Applications - Table

Gordon Ramsay restaurant Champagne Brown patinated table
| London



Material Applications - Counters

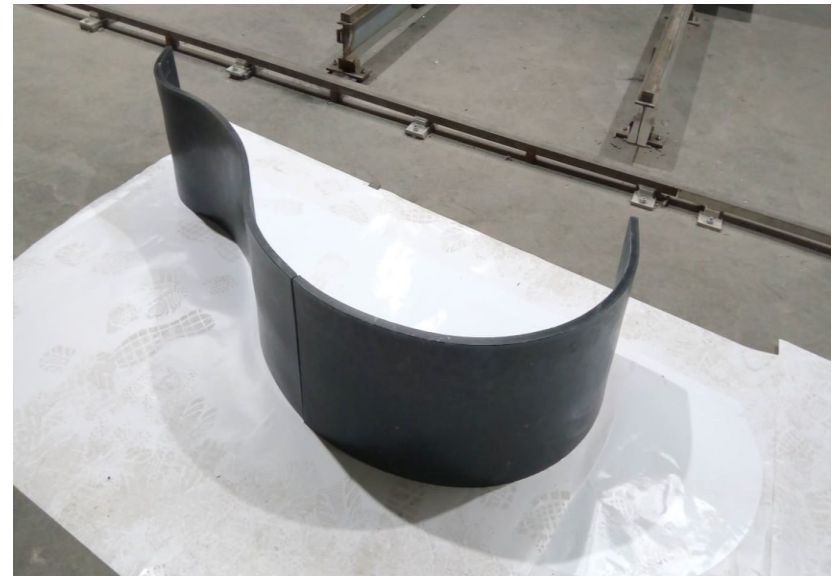
Bar top Green matt honed backlit Walker Zanger | New York City | USA



Material Applications – Bending

Master of LXRY 2018 Black patinated Piano | Netherlands

- **handmade** forms
- exclusively with heat and gravity
- Possible produce forms on customer request



Master of LXRY 2018 Black patinated Piano | Netherlands



Material Features – Bending/Curving

different shapes



MAGNA. 
GLASKERAMIK

APPLICATION
Kitchen

Material Applications - Kitchen

Kitchen splashback and illuminated countertop Ocean Blue and Polar White



Material Applications - Countertops

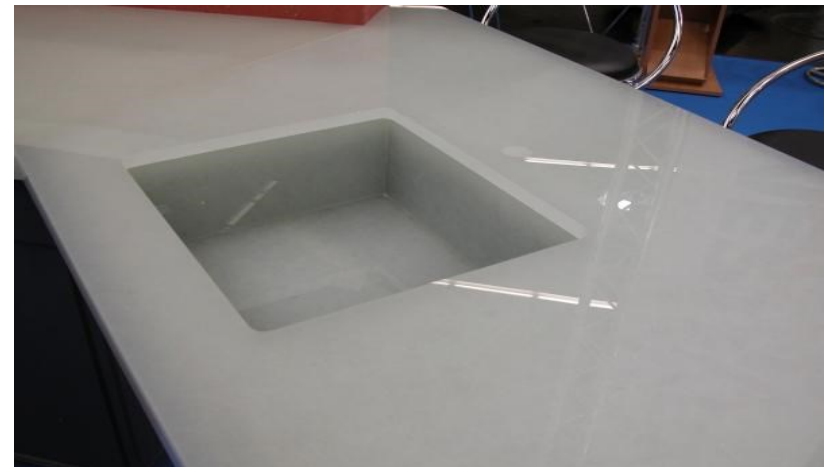
MAGNA
GLASKERAMIK

Kitchen surface: Jade polished 2+2 cm Edges | Stuttgart Germany



Material Applications - Kitchen

Undercounter kitchen sink in Creme White polished, Jade polished and patinated



RBS Elektro Showroom kitchen black patinated glued bridge solution | Germany



Material Applications - Kitchen

Kitchen worktops showroom TALA Polar White polished | London | UK



Material Applications - Countertops

Nelson Design Credit for Stareton Green polished countertop | UK



Material Applications - Kitchen

Worktop Polar White patinated glued bridge solution Manchester
| London | UK



MAGNA.
GLASKERAMIK

APPLICATION
Bathroom

Material Applications – Bathroom

Bathroom – Showerwall and vanity curved



Illuminated Showerwalls – Ice Nugget doubleside polished, Creme White patinated



Material Applications – Bathroom

Showroom Urban Boutique Düsseldorf Black patinated | Germany

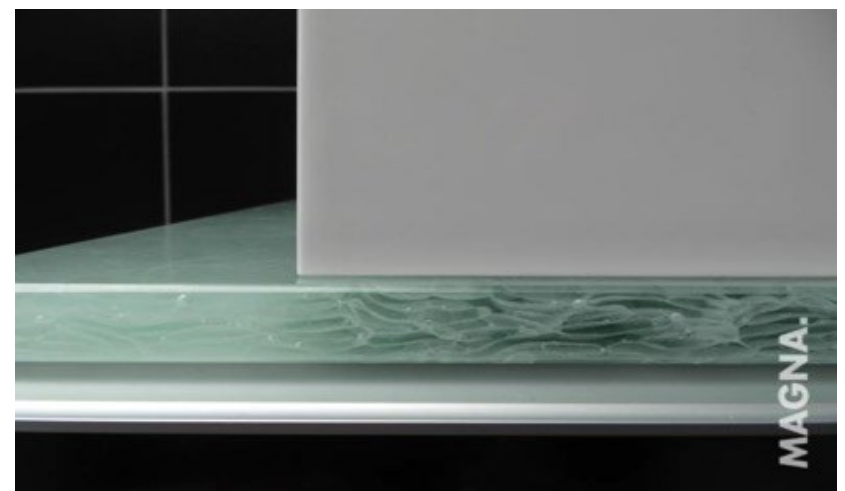
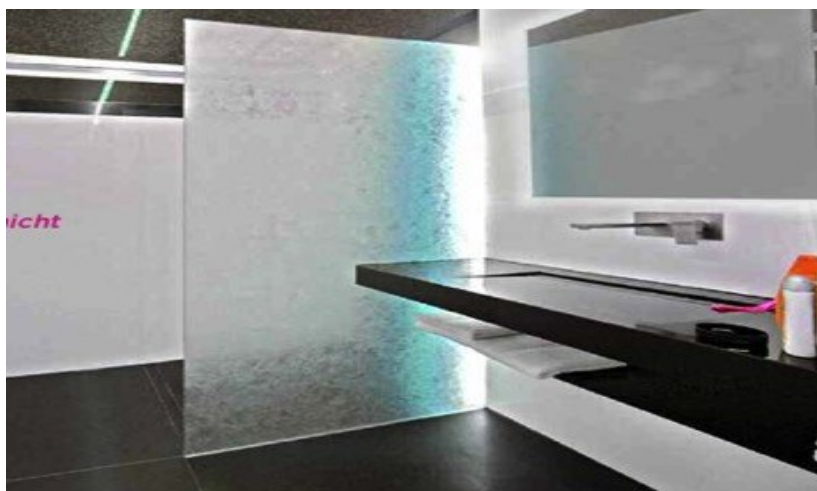


Baas shower wall and bathroom shelf Ice Nugget double polished
| Germany



Material Applications - Bathroom

Bathroom: splashback, countertop and shower wall illuminated



Material Applications - Countertops

Bathroom Top Light Grey and Showerwall Ice Nugget double polished @Götting Bösel | Germany



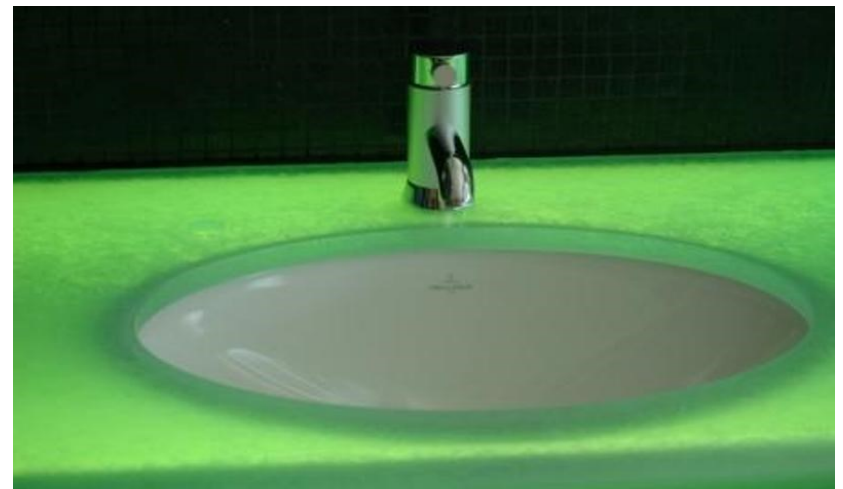
Material Applications – Bathroom Showstand

Countertop Polar White polished Masters of LXRY | Netherlands



Material Applications - Bathroom

Bathroom: Jade patinated countertop with round cutouts



MAGNA. 
GLASKERAMIK

APPLICATION
Floors and Stairs

Podest The sun king @LVMH by Ringot Green polished
| Paris | France

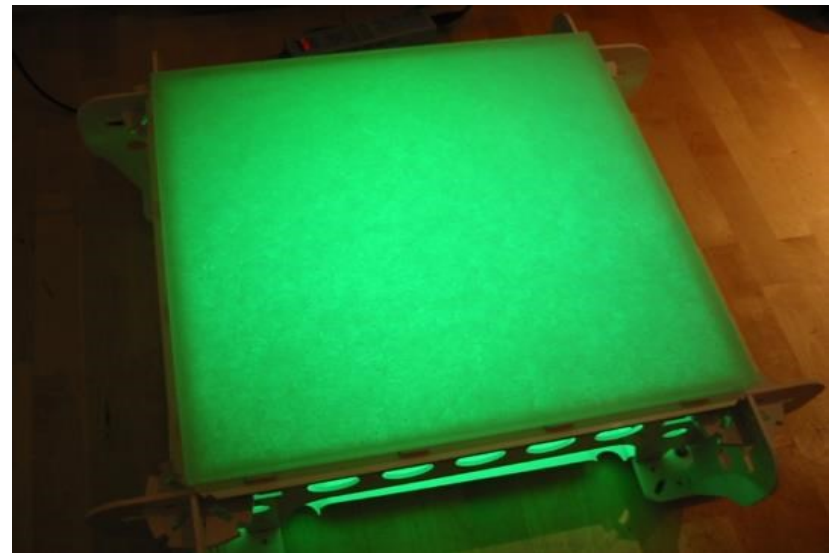


Posche Museum podest for Oldtimer Jade polished | Stuttgart
| Germany



Material Applications - illuminated Flooring

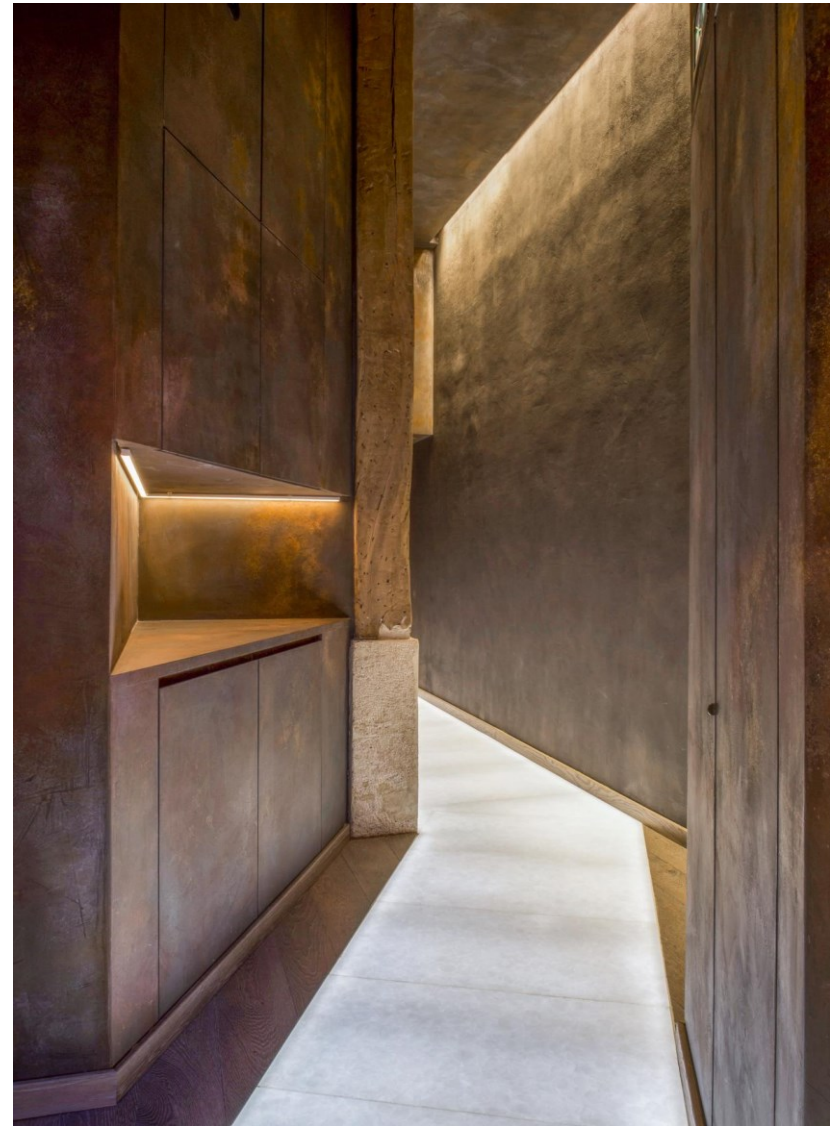
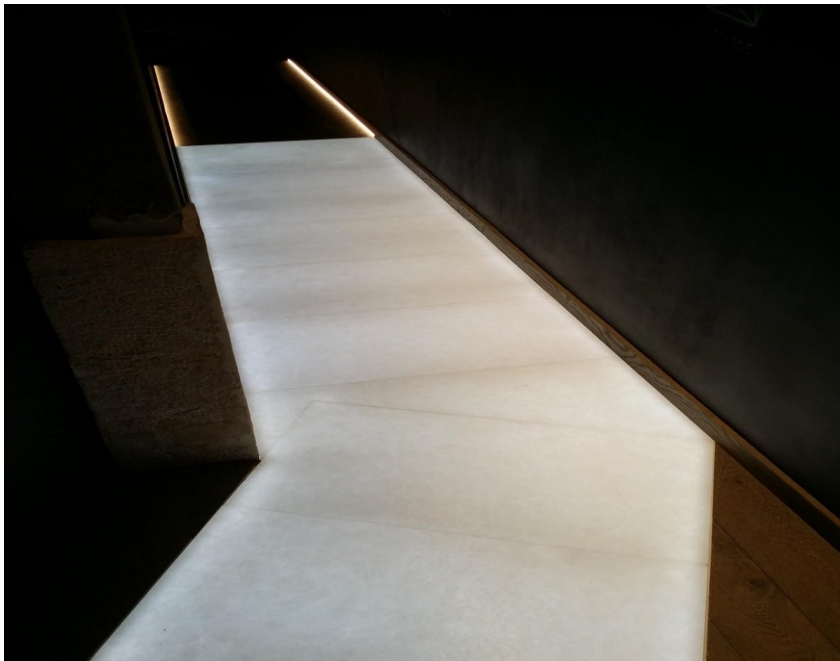
London Heathrow airport:
Polar White backlit floor application
Sony Display | London | GB



Material Applications – illuminated Flooring

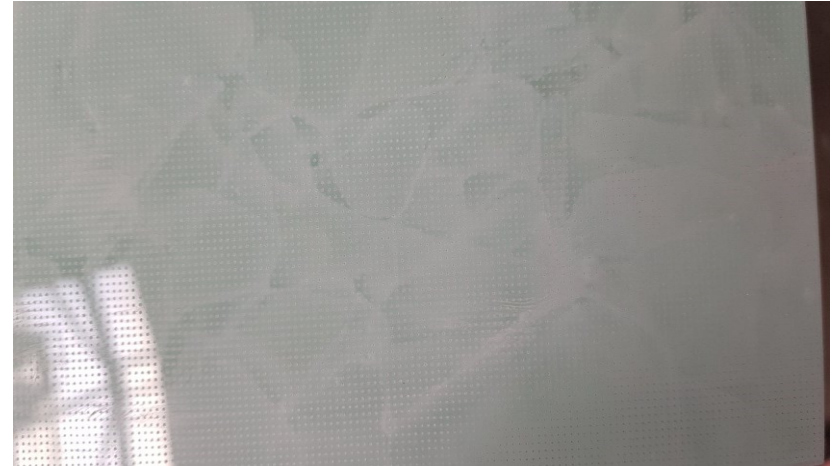
Goralska Boutique by Ringot Paris Polar White patinated

- patinated Surface also suitable as a floor
- possible surface laser for slip resistance



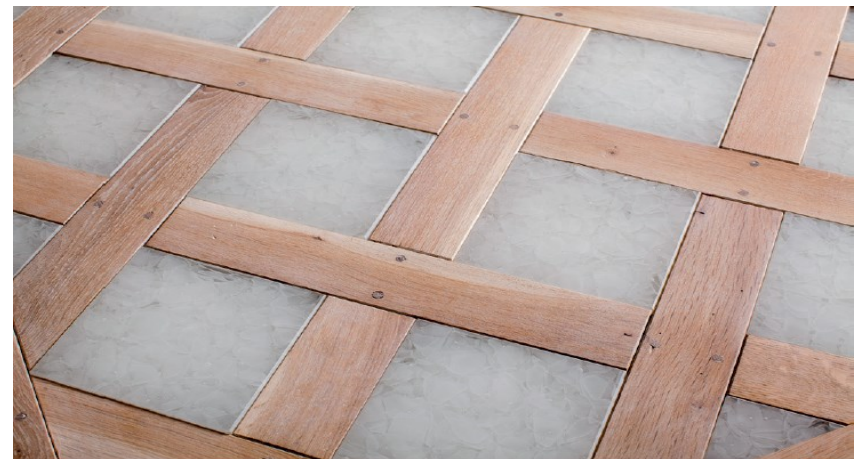
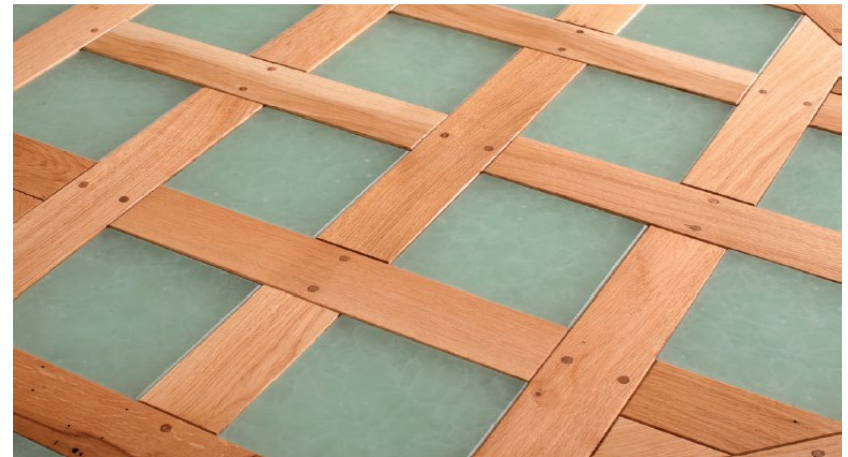
Laser Grip Flooring and Stairs

- possible on all surfaces
- Slip resistance rating up to R10
- barely visible on the surface
- Laser pattern can be customized
- stairs, floor and design objects



Material Applications - Flooring

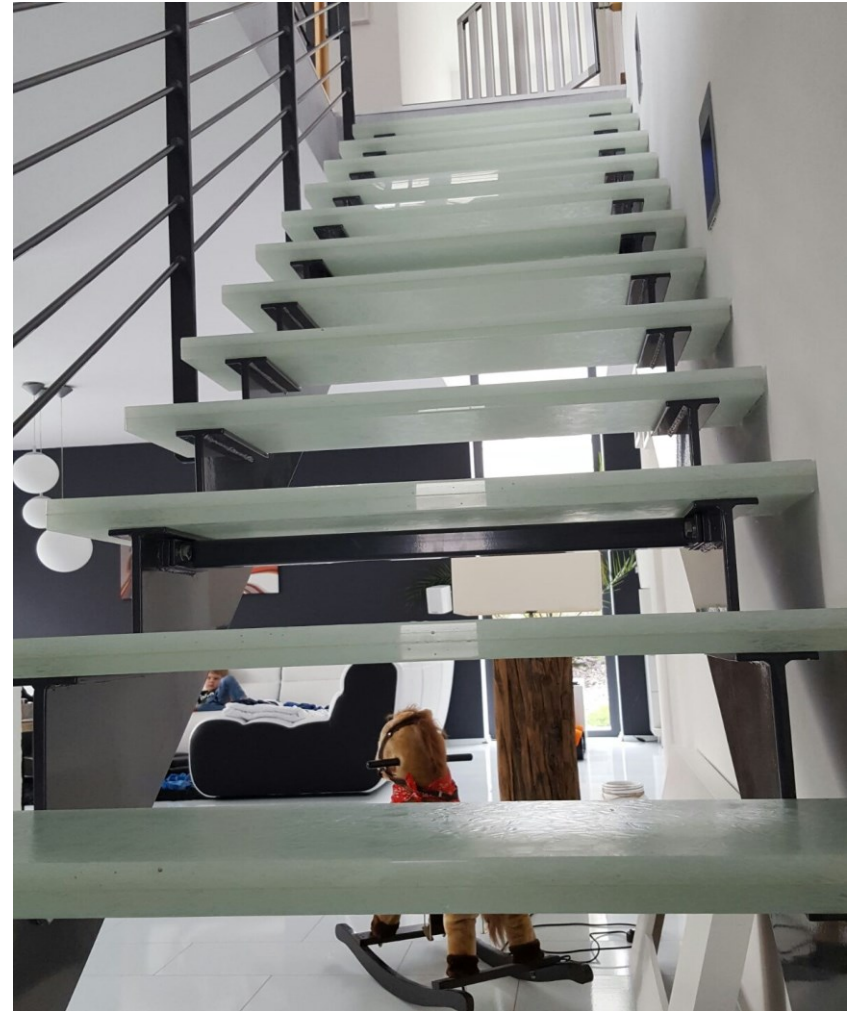
Trials Parkett wood Green, Jade and Polar White polische | Berlin
| Germany



Showstand Casadecor backlit floor Ice Nugget doublesided polished | Madrid | Spain



Staircase Polar White patinated doubled | Germany



Material Applications - illuminated Stairs

Bar Stairs Polar White patinated | Miami | USA



MAGNA. 
GLASKERAMIK

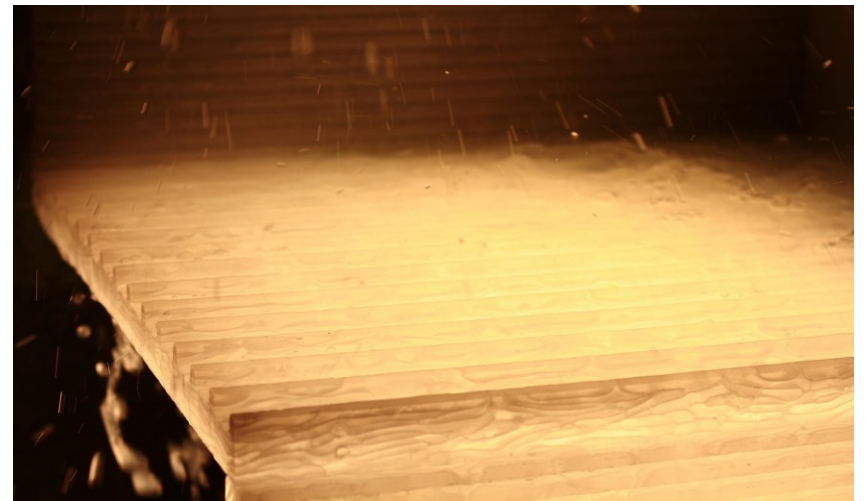
APPLICATION
Fire | Water | Sculpture

Material Applications - Fireplace

GMP-Architecture-Pavillion: Jade patinated Fireplace, interior design application | Hamburg | Germany

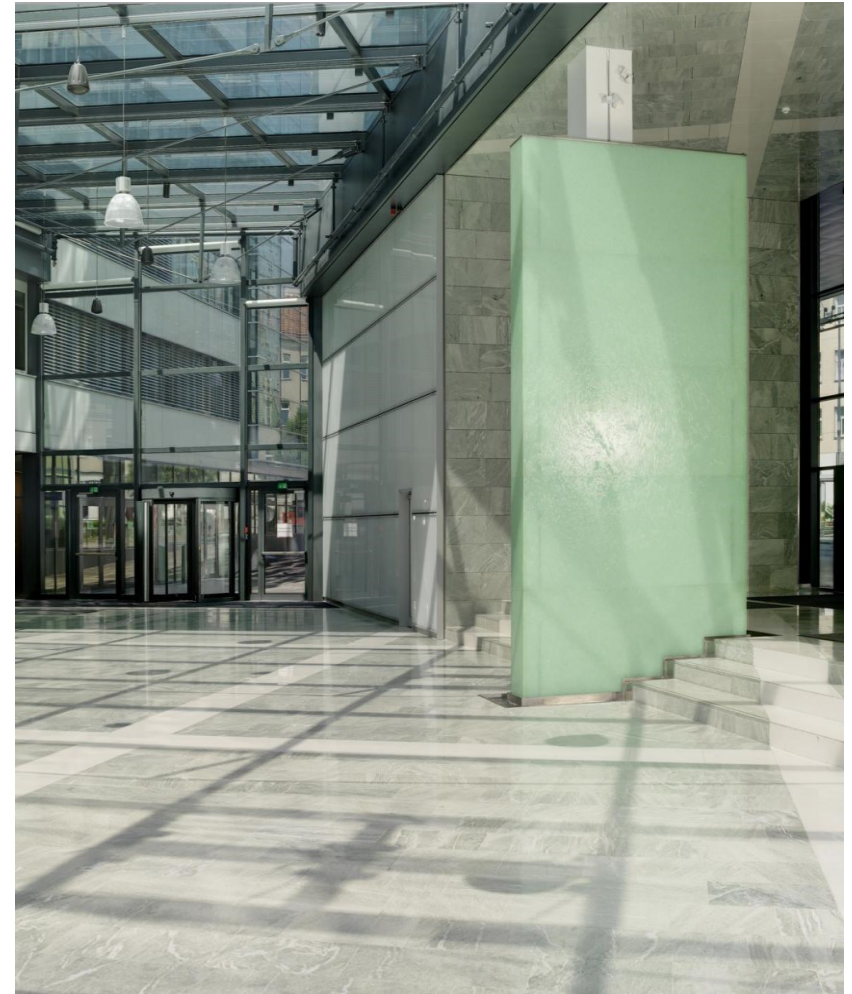


Kuwait Airport Watersteps for Mock-Up Jade patinated backlit



Material Applications - Waterwall

Hotel Europe Plaza - waterwall in Jade patinated | Wien | Austria

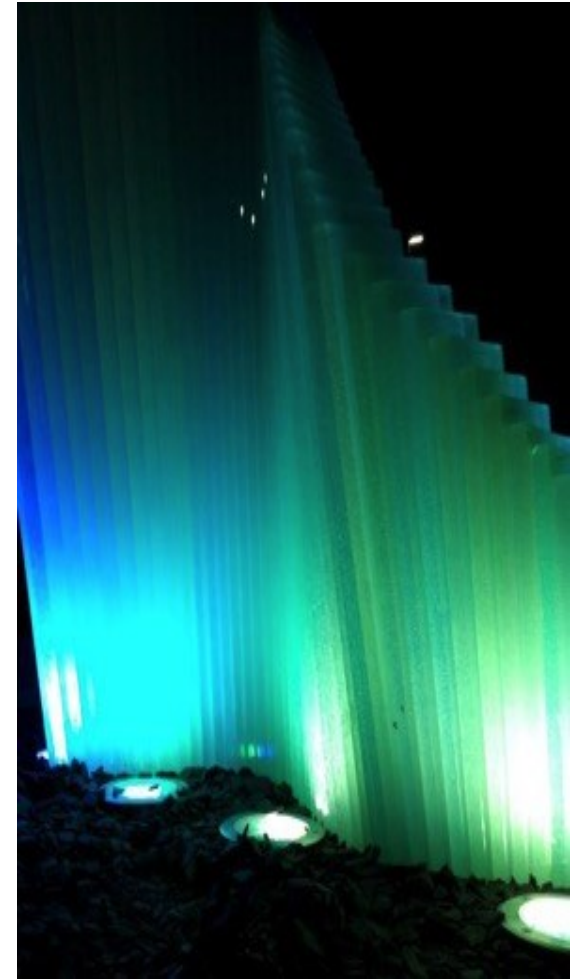
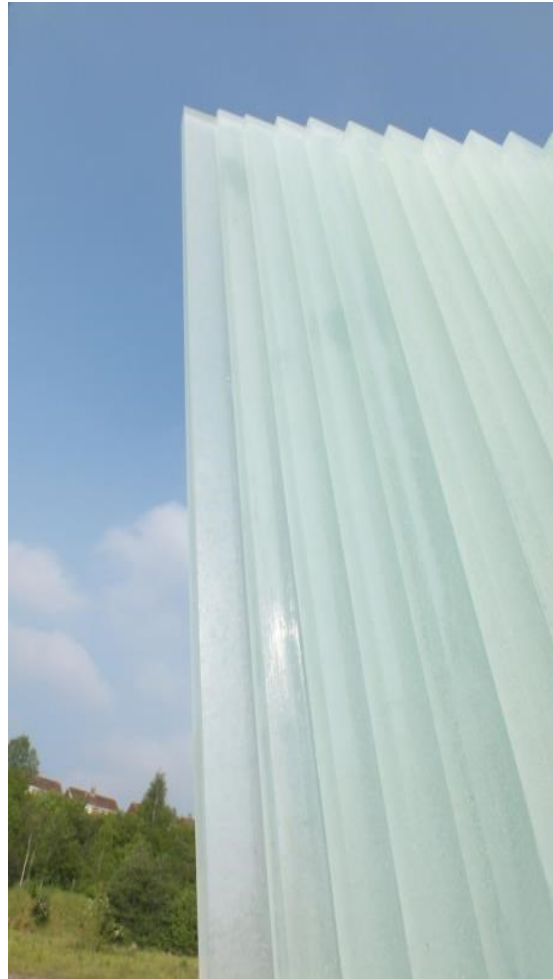


Material Applications - Fountain

Fountain Shopping Mall Green polished | Lübeck & Kiel
| Germany



Taff Trail Sculpture: Jade | England



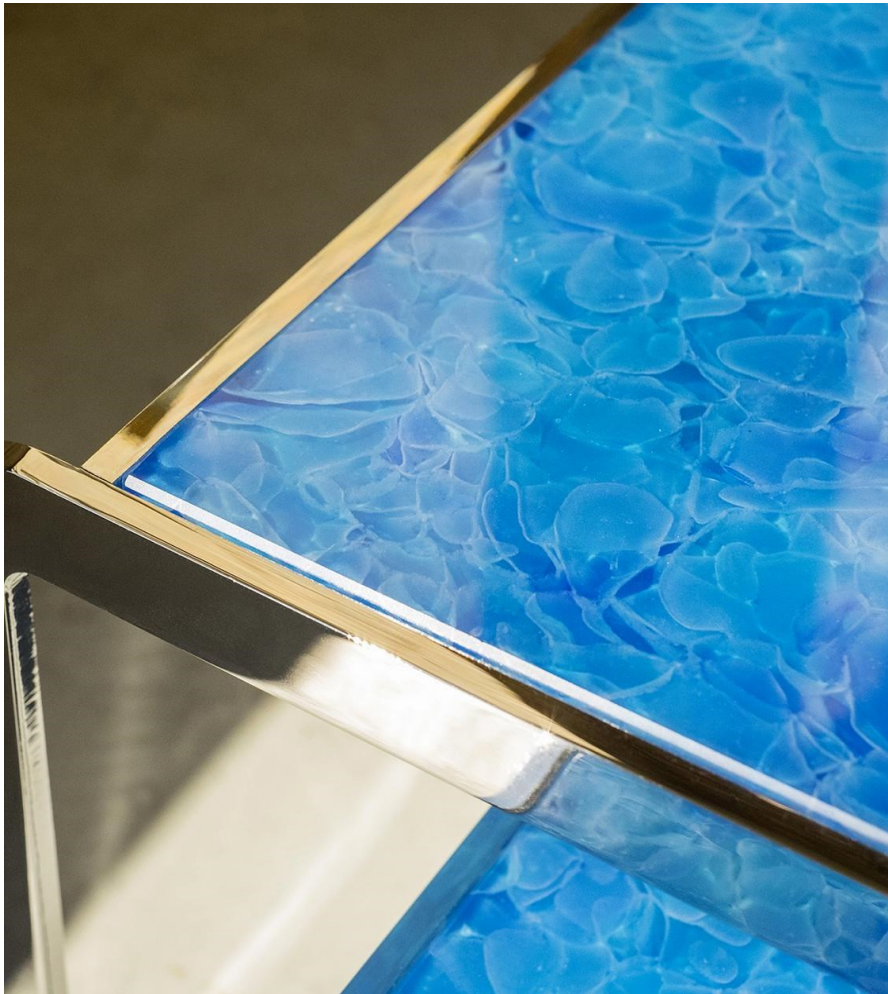
MAGNA. 
GLASKERAMIK

APPLICATION
Design Objects

Deutsu Glaskeramik Mountain Lake Table Ocean Blue | Germany



The Elbow Table by Caussa Ocean Blue polished | Germany



Material Applications – Design Objects

Design Tables: Font Low + Font High + Font Round by Sebastian Herkner |
Pulpo Germany



Material Applications – Design Objects

Tala Magma range | London | UK



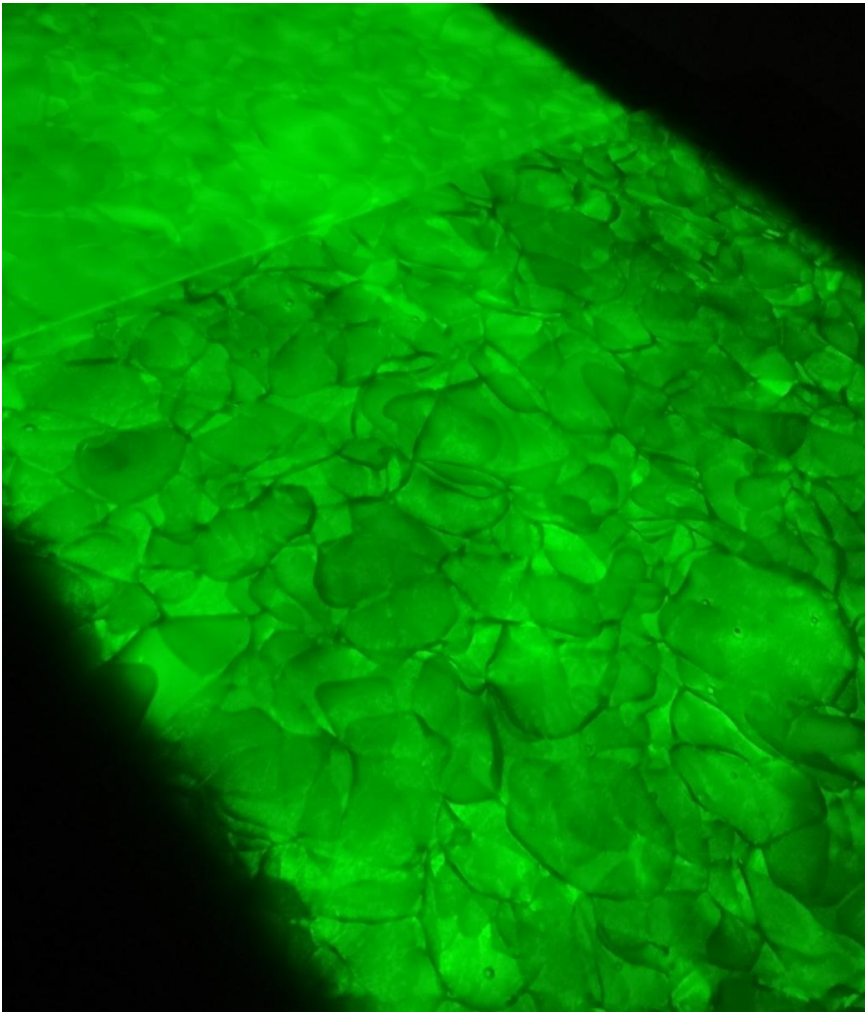
Unique pieces of designers



MAGNA. 
GLASKERAMIK

LIGHT

LED Panel - warm and cold white + RGB features



Backlight

MAGNA
GLASKERAMIK

LED Panel – Company Bäder | warm and cold white



MAGNA. 
GLASKERAMIK

APPLICATION
Interior Walls

Material Applications - Internal Wall illuminated

Room separation walls flat Treptower Park Ice Nugget double polished with anchors | Berlin | Germany



Material Applications - Internal Wall illuminated

MAGNA
GLASKERAMIK

GLA Chukyo Hall, Prayer Hall Takenaka Polar White polished
| Nagoya | Japan



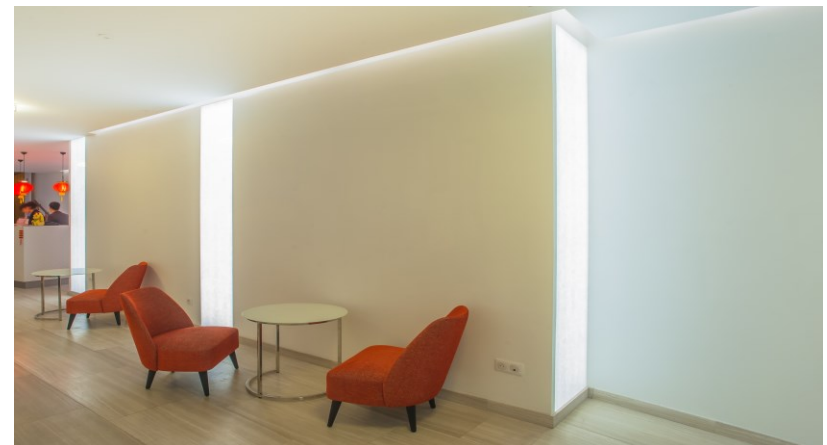
Material Applications - Internal Wall illuminated

Cannon Place Station: light wall in Polar White | London | UK



Material Applications - Internal Wall illuminated

Hotel Castiglione Polar White polished backlit Wall | Paris | France



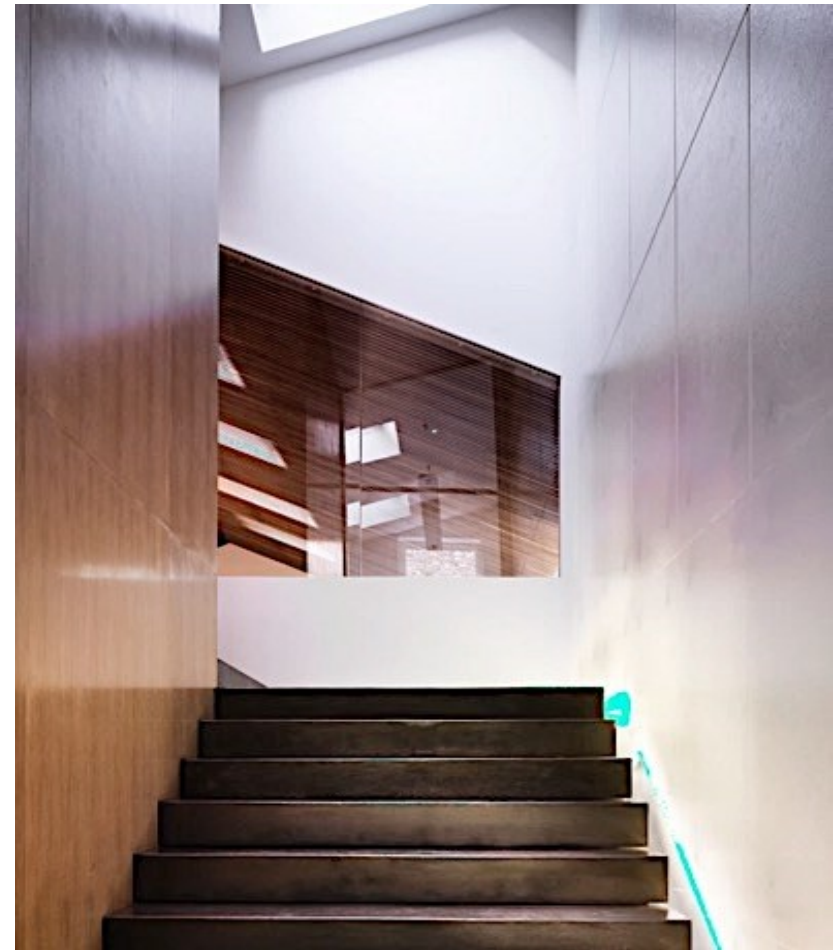
Material Applications - Internal Wall illuminated

MAGNA
GLASKERAMIK

Agency St. Martin Shop Hunter Evans Jade polished | London | UK



Dental practice Polar White patinated Wall with anchors | Wien
| Austria



Hofgeismar Chapel: interior walls in Galaxy (Creme White) polished
| Germany



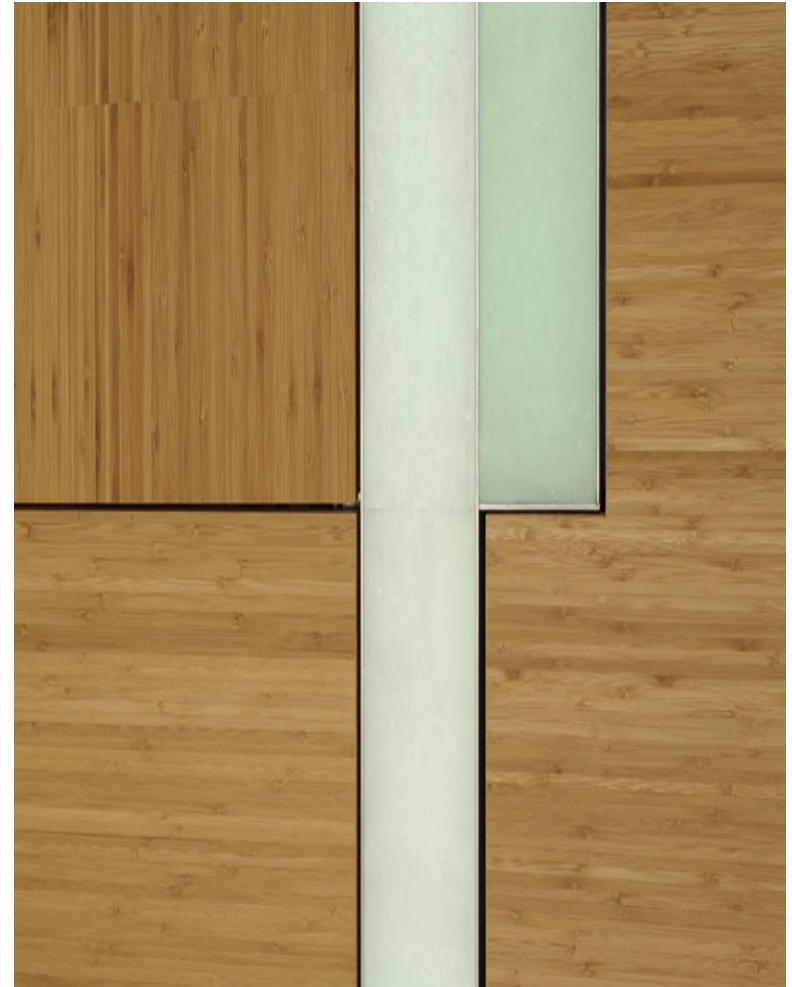
Material Applications - Internal Wall illuminated

Seperation Wall Jewish Museum Ice Nugget double sided polished
| Vienna | Austria



Material Applications - Internal Wall illuminated

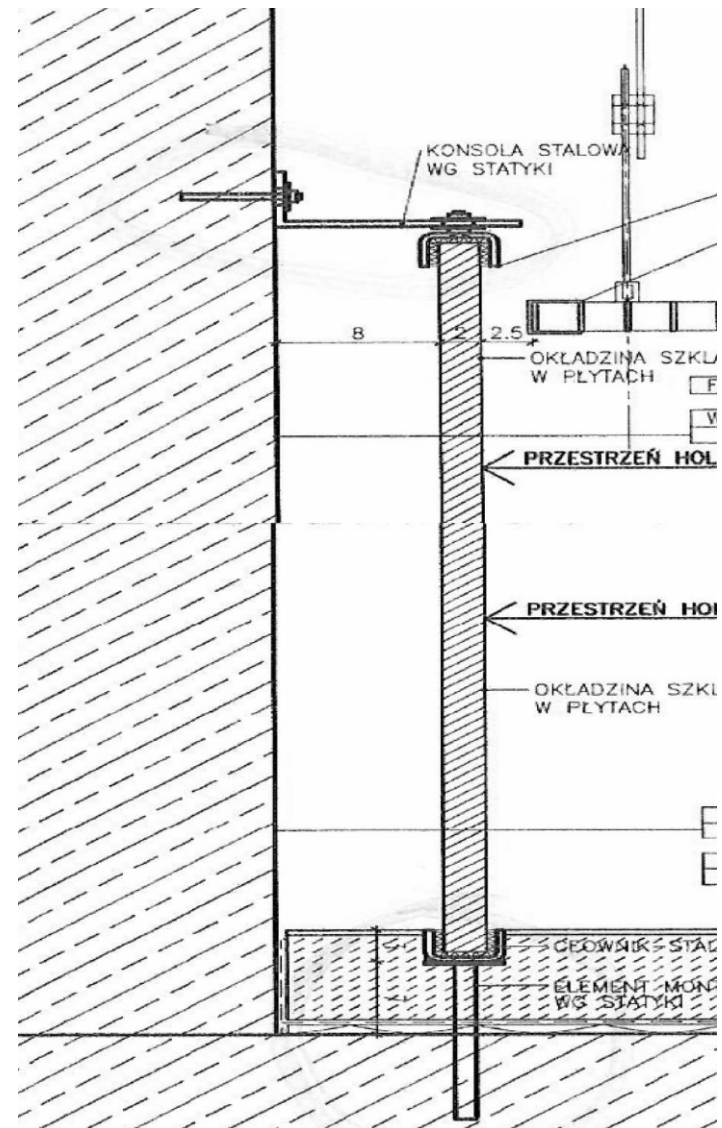
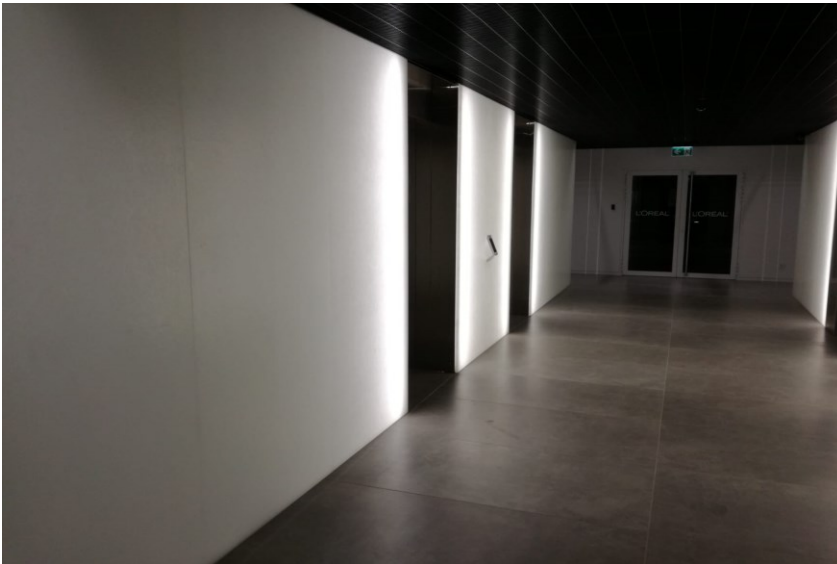
St. Georges Hospital Jade patinated | London | UK



Material Applications – Internal Wall illuminated

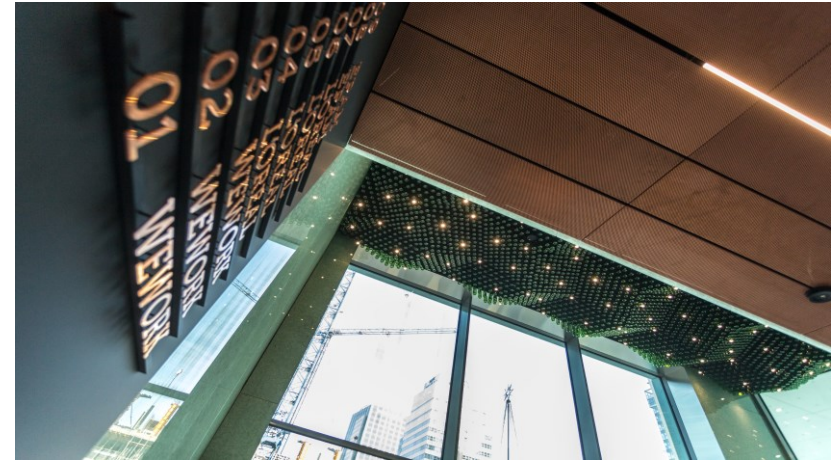
Browary Warszawskie Elevator Halls
Polar White polished | Warsaw |
Poland

- Installation via U-shaped profiles
- installation without visible attachment
- size of Panels 2810x1080 mm
- 500 square meters over 10 floors



Material Applications - Internal Walls

Browary Warszawskie Lobby Light Grey Green polished | Warsaw
| Poland



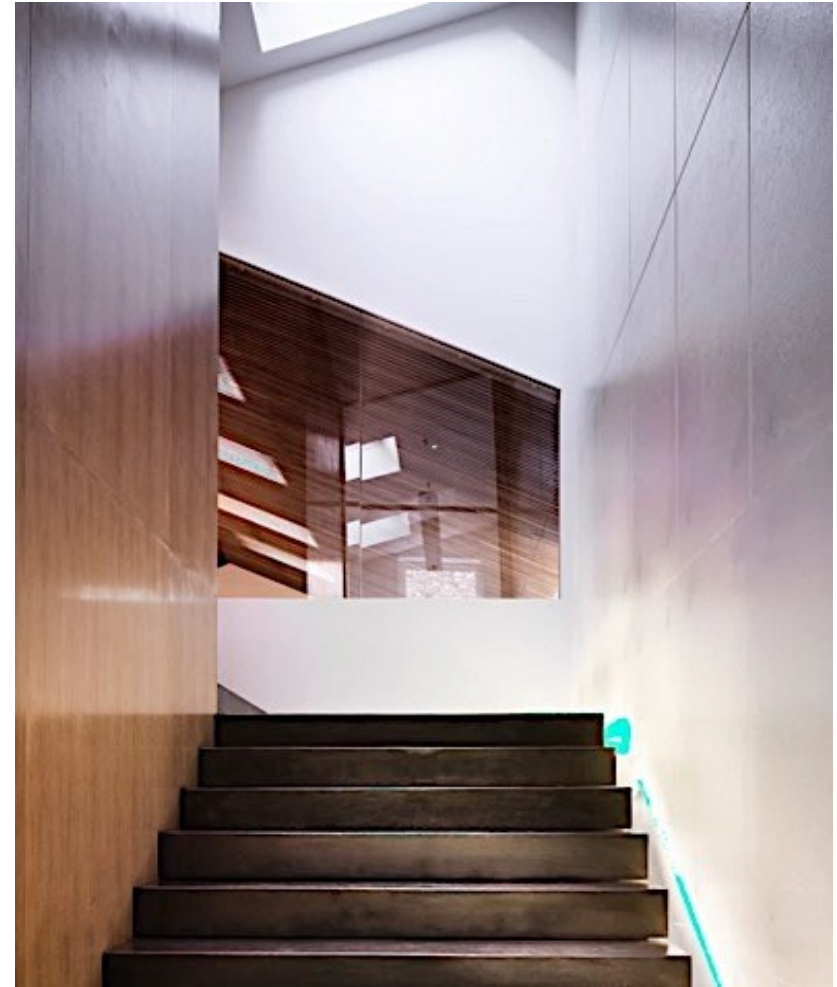
Material Applications - Internal Walls

Guangzhou Office Building Elevator and Lobby Interior Jade patinated Guangzhou China | |



Material Applications - Internal Walls

Naturalia Shop internal walls in Polar White | Paris | France



Material Applications - Internal Walls

Kolumbarium church Interior Walls and grave decoration Polar White patinated | Marl | Germany



Elevator Hall Jade patinated Madrid

- wall cladding for the elevator halls of all 12 floors
- special clamp attachment system to fix the four corners of each panel
- total 175 Glaskeramik panels have been used up to a size of 2730x920 mm

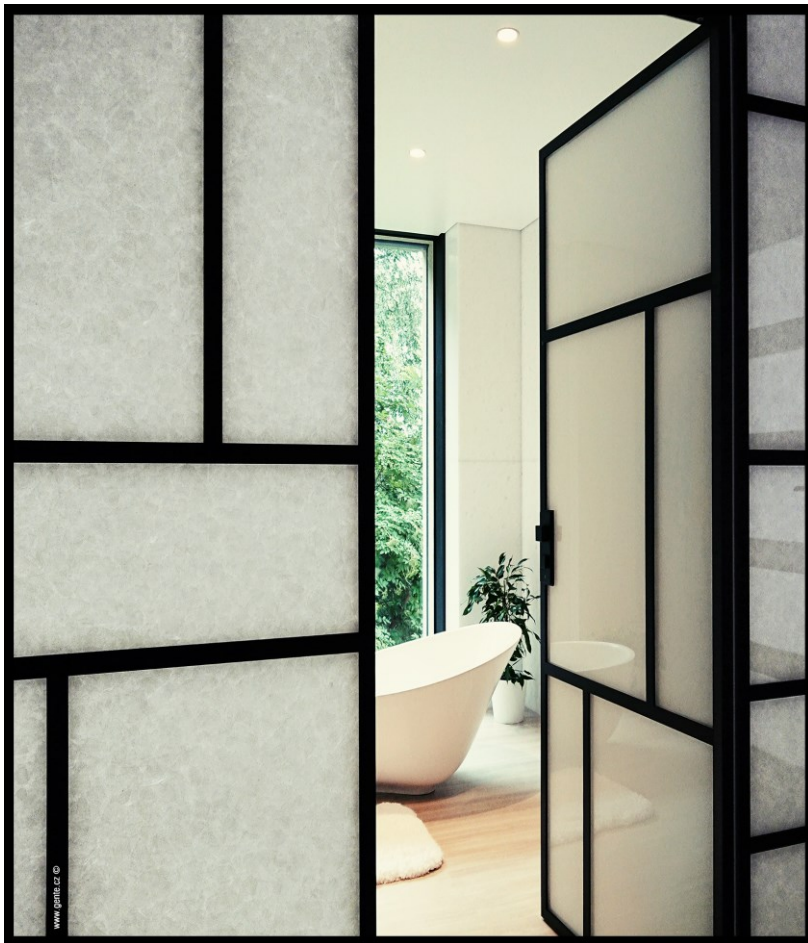


Material Applications - Internal Wall

Seperation Wall to Bathroom Ice Nugget double sided polished Loft
| Tallinn | Estonia



Seperation wall door naturally backlit in Polar White patinated
| Czech Republic



Dental practice Polar White patinated Wall with Anchors | Wien
| Austria



Material Applications - Internal Walls

William Booth College Chapel Jade patinated | London | UK



Material Applications - Internal Walls

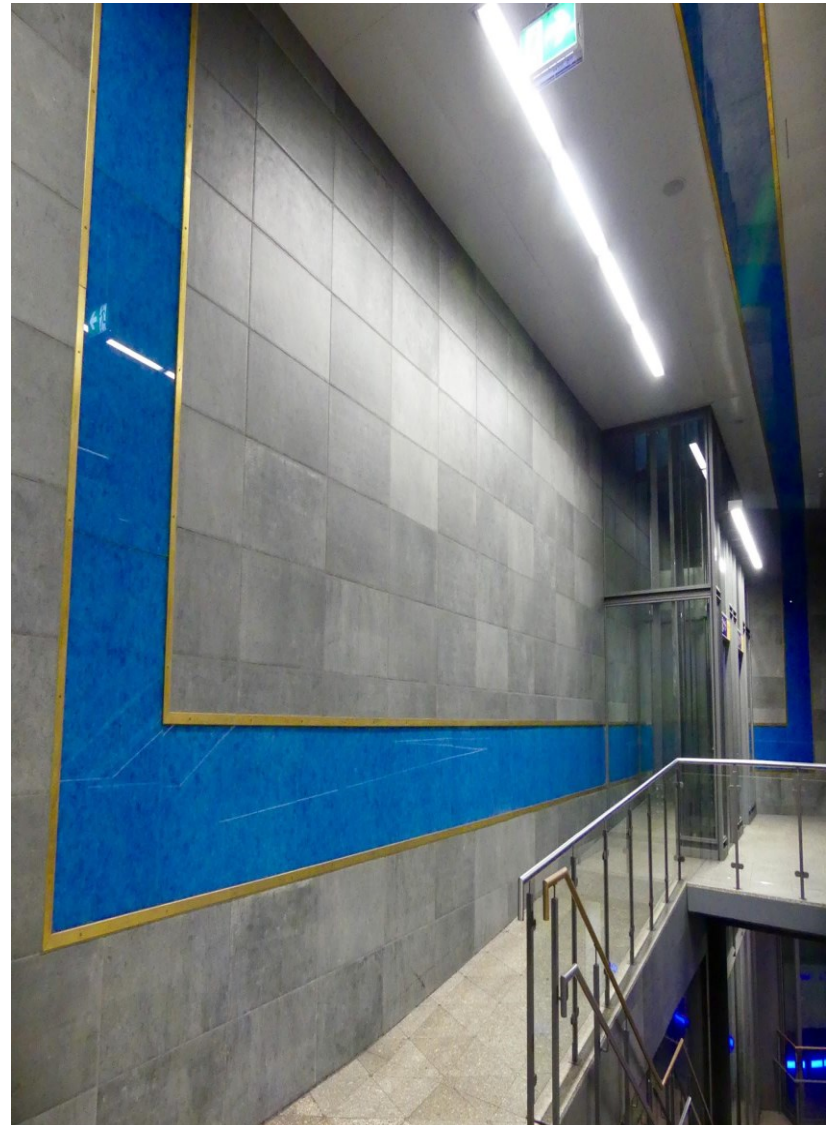
Information-Box, St. Sebalds church Internal walls in Creme White patinated | Nurnberg | Germany



Material Applications – Internal Walls

Tram station Berliner Straße | Essen | Germany

- Backside laminated safety glass with PVB or EVA technology
- Normally 16mm Glaskeramik + 1.5mm PVB + 6mm toughened glass
- Backup at public places, overhead glazing, balustrades, railings, stairs

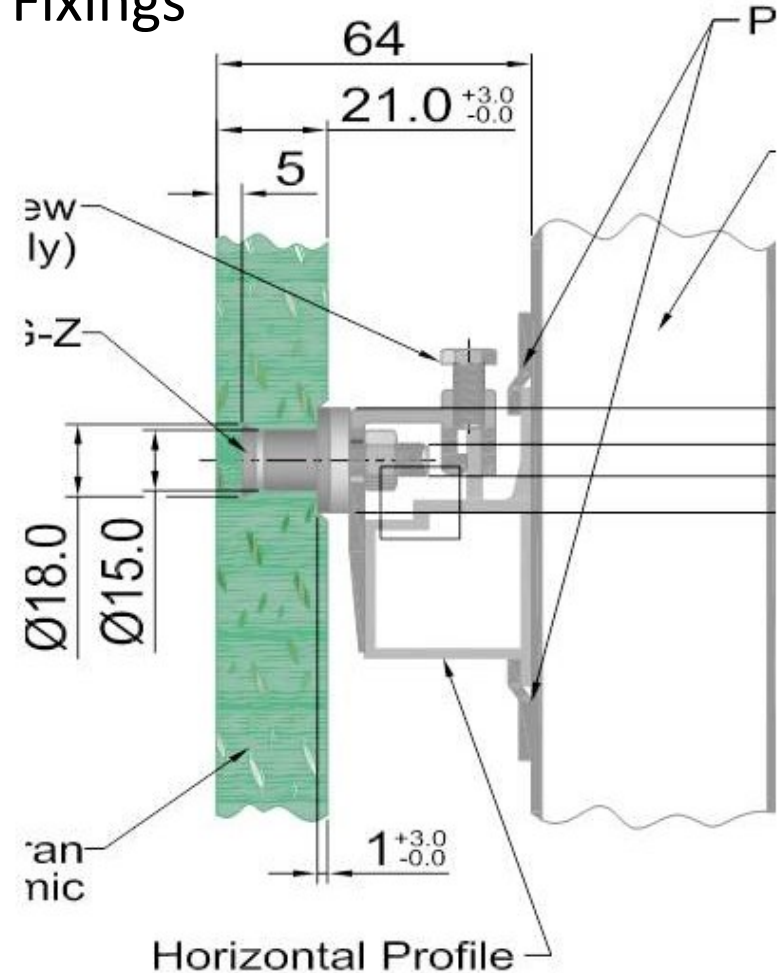
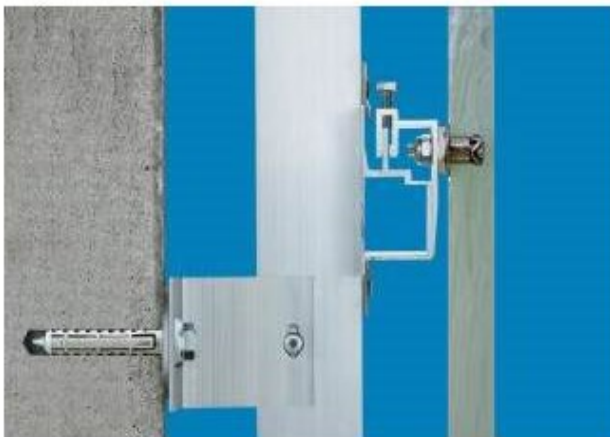


MAGNA. 
GLASKERAMIK

APPLICATION
Facades Exterior

Standard fixation system with Fischer anchors

Fischer ACT Technology - Details + Fixings



E	26.2.09	J.A.11		Structural resin corrected file
A	26.2.09	J.A.11		INITIAL ISSUE
REV	DATE	BY	REASON	DESCRIPTION

Standard fixation system with Fischer anchors

Fischer ACT Technology - Details + Fixings

- Panels cut-to-size + anchors drilled and placed in factory Germany = premounted panel to construction site for easy installation
- ETA certification
- Frost resistance for exterior use
- UV resistance = color stability
- simple attachment



Approval body for construction products and types of construction
Bautechnisches Prüfamt
An institution established by the Federal and Laender Governments



European Technical Assessment

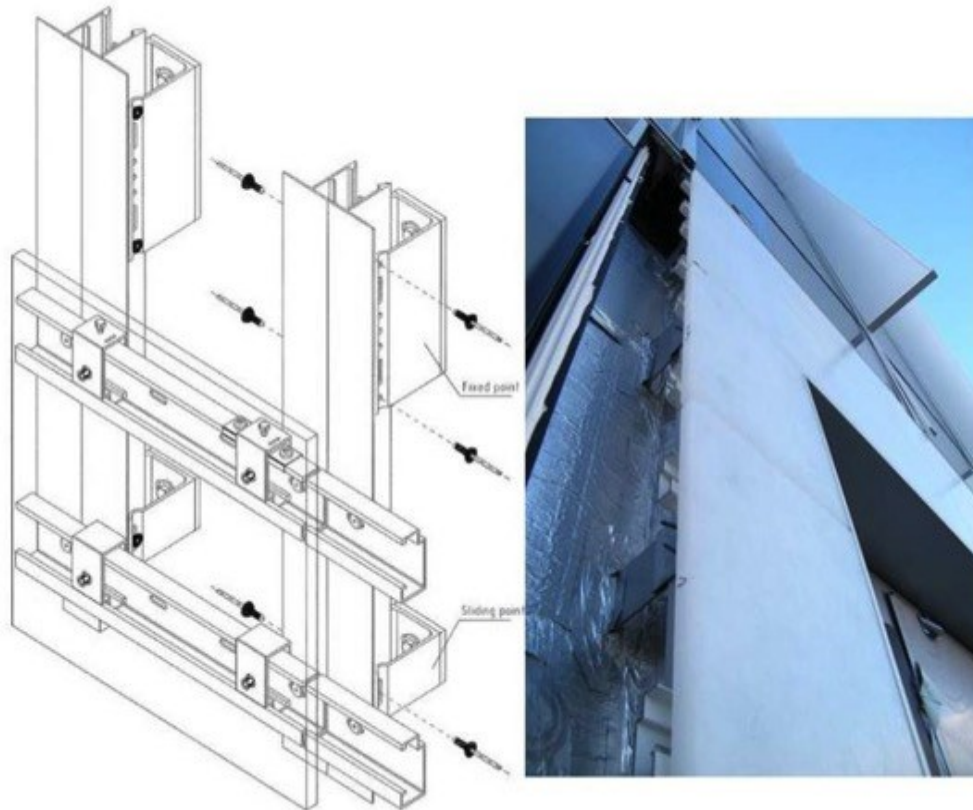
ETA-16/0302
of 30 January 2017

English translation prepared by DIBt - Original version in German language

General Part

Technical Assessment Body issuing the European Technical Assessment.	Deutsches Institut für Bautechnik
Trade name of the construction product	fischer FZP-G-Z for the rear fixing of structural glass-ceramics
Product family to which the construction product belongs	Fastener for the rear fixing of facade panels made of glass-ceramics
Manufacturer	MAGNA Naturstein GmbH Straße der Einheit 18 06179 Teutschenthal DEUTSCHLAND
Manufacturing plant	Teutschenthal, Deutschland Teutschenthal, Germany
This European Technical Assessment contains	13 pages including 3 annexes which form an integral part of this assessment
This European Technical Assessment is issued in accordance with Regulation (EU) No 305/2011, on the basis of	European Assessment Document (EAD) 330030-00-0601

Standard fixation system - railings



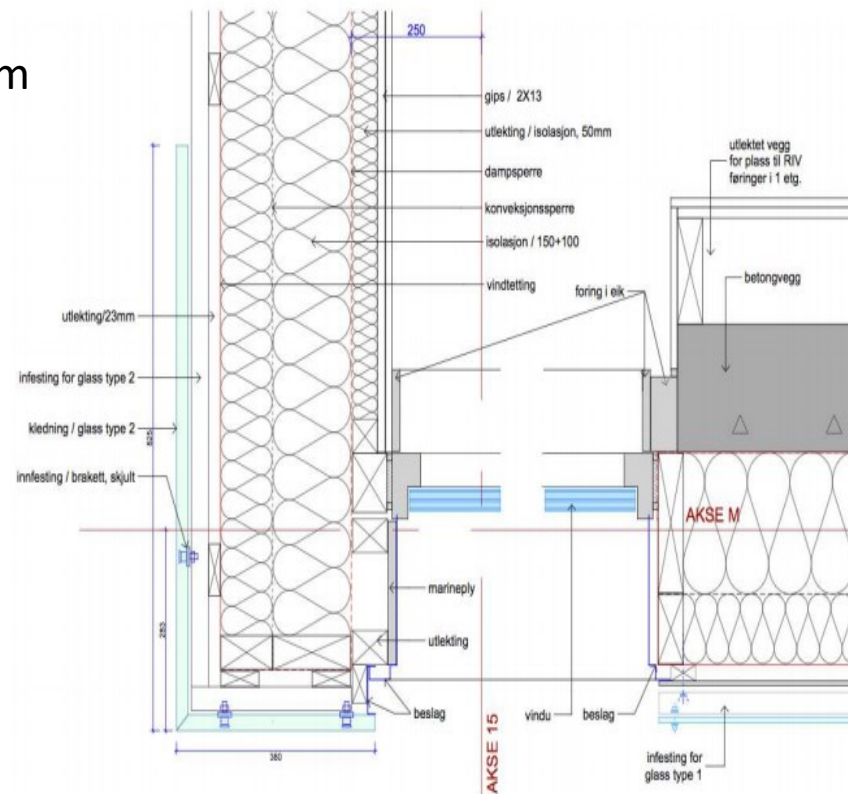
Office Building: Bassengbakken II Trondheim | Norway



Case Study - Bassengbakken II Trondheim

Office Building: Bassengbakken II Trondheim | Norway

- positioning of the anchors 100mm from edges
- Edges of building with open miters
- heavily durable
- offering true performance
- tested certification as well as suited to both hot and cold climates
- strong against vandalism
- impervious to staining
- almost self-cleaning in its finish



Folkwang Museum: facade in Cream White | Essen | Germany



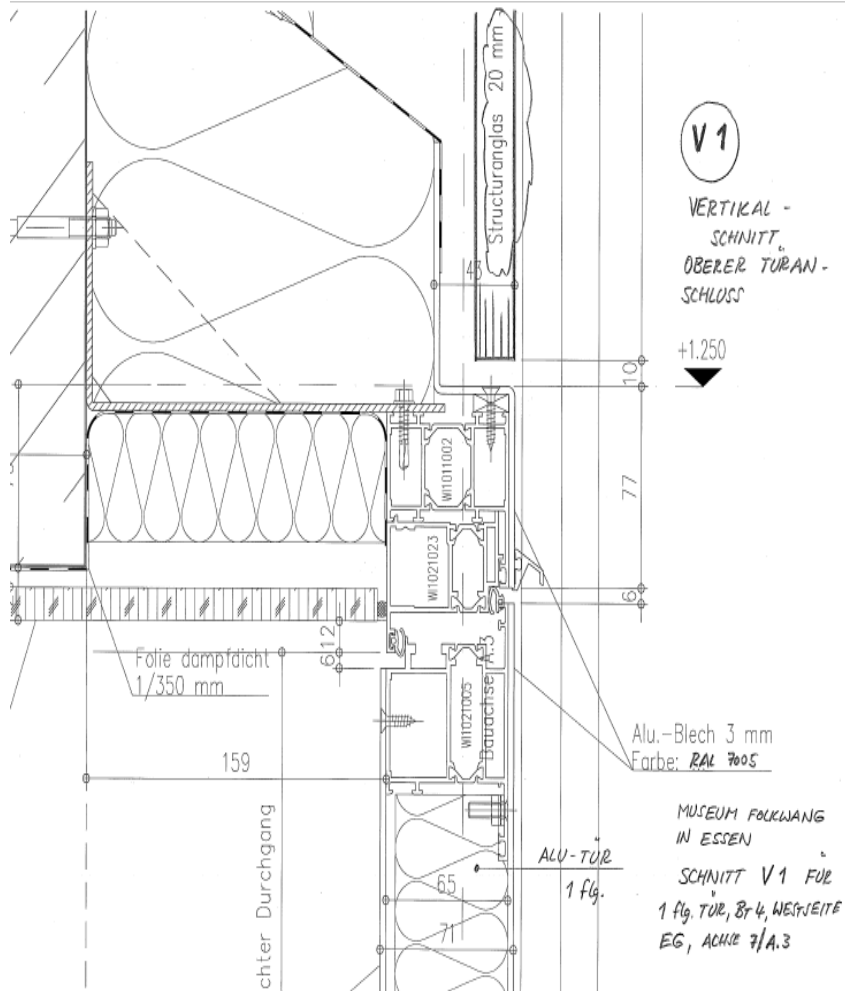
Material Applications - Facades

Folkwang Museum: facade in Cream White | Essen | Germany



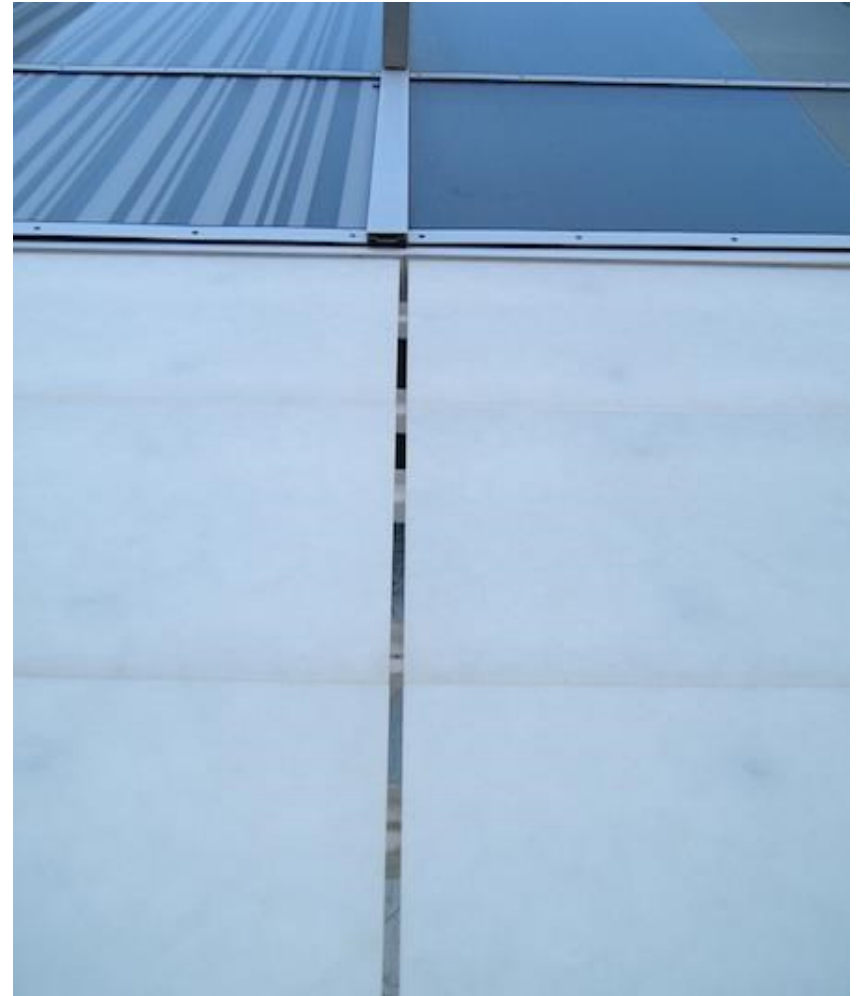
Case Study - Folkwang Museum - installation

Folkwang Museum: facade in Cream White | Essen | Germany



Material Applications - Facades

Office Building: Polar White facade | Blackpool | UK



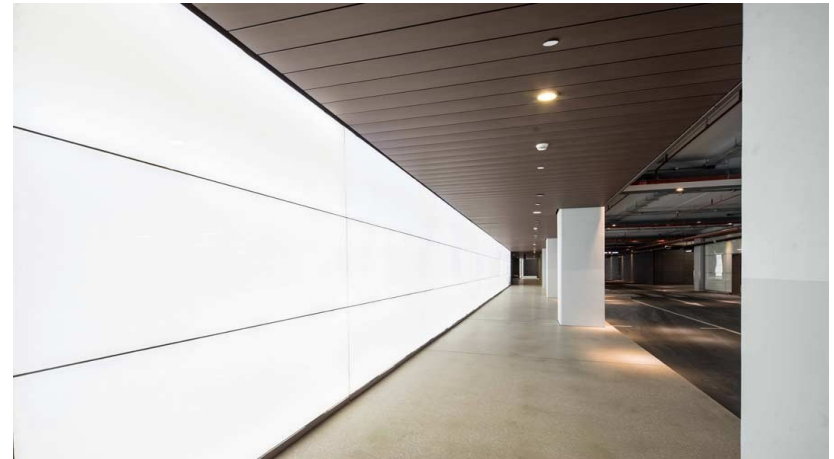
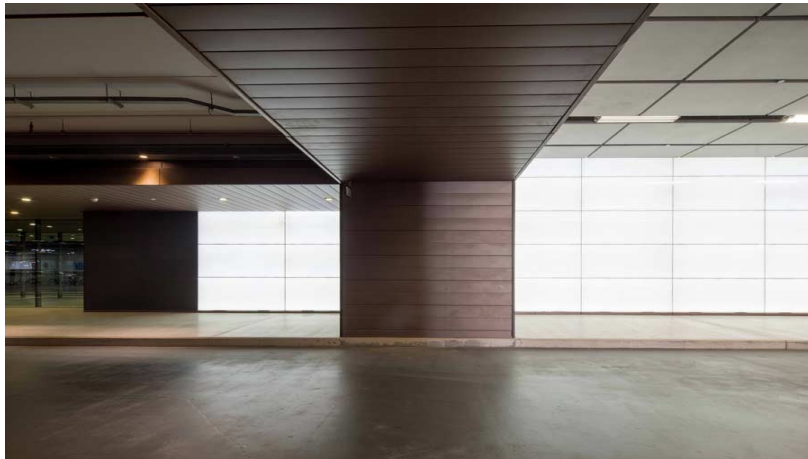
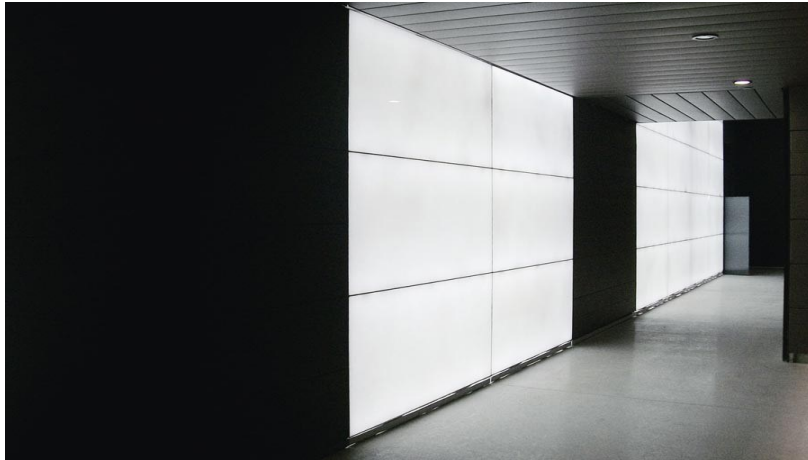
Eye Care Centre: facade in Jade patinated | Michelfeld | Germany



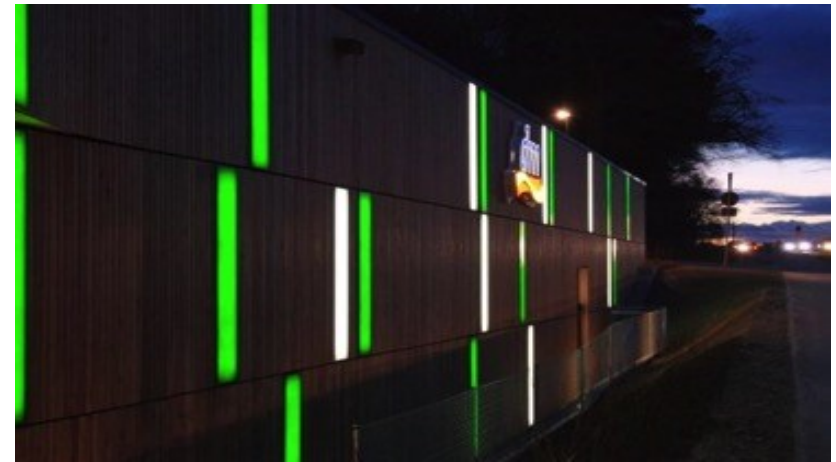
Fire station: facade in Polar White patinated | Neukirchen- Vlyn
| Germany



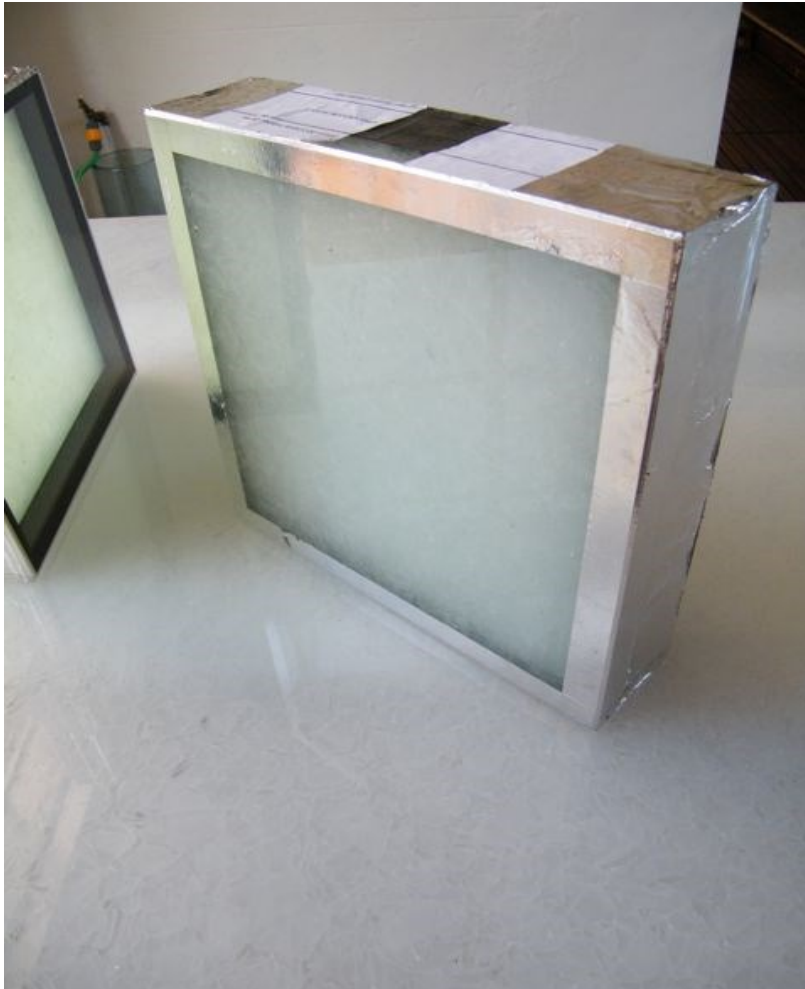
GPI Masdar City PRT Station in Polar White patinated Abu Dhabi | Emirates



DM Market: integrated illuminated Glaskeramik® pieces in façade
Schondorf | Ammersee | Germany



Bear Garden in Jade polished | London | Great Britain



Material Applications - Facades

Currybude in Polar White polished | Berlin | Germany



Bahausmuseum in Ice Nugget patinated backside polished
| Weimar | Germany



Material Applications - External Application

BuGa Recycling Pavillon Polar White, Jade, Green and Ice Nugget patinated | Heilbronn | Germany



MAGNA. 
GLASKERAMIK

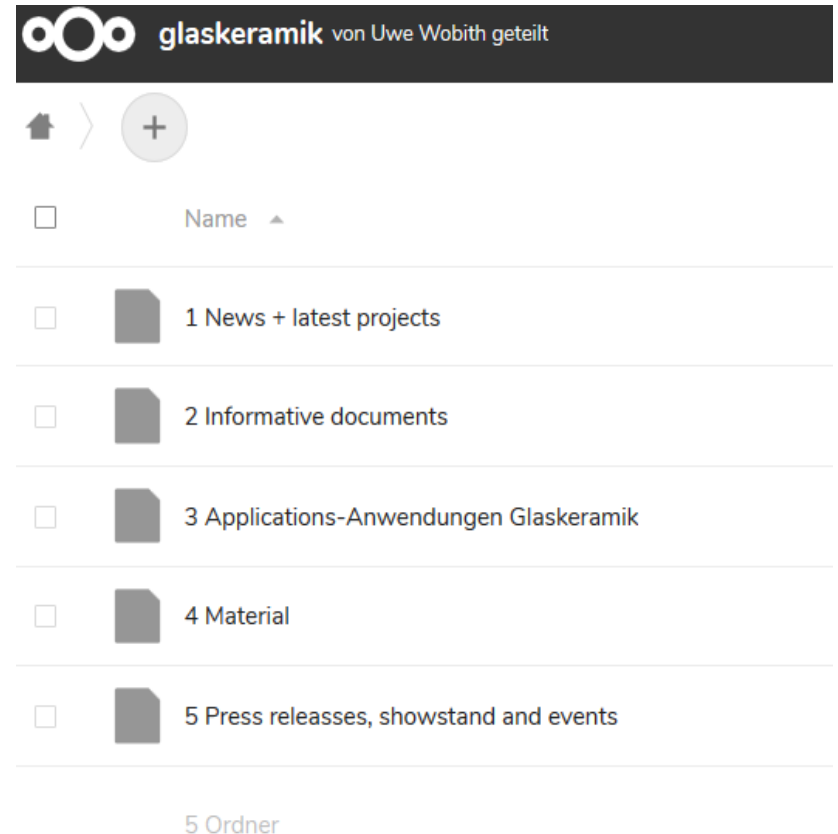
Marketing Material

MAGNA Glaskeramik Nextcloud







- always up to date
- all data sheets, certificates, processing manual and much more
- Videos from production, material
- More than 2000 images from 250 reference projects
- Immediately an answer to almost all questions



Nextcloud



Marketing Material – printed summary

	MGK book objects English	A4 across 80 pages hardcover
	MGK catalogue German English	A4 up 40 pages
	MGK catalogue bathroom/kitchen German English	A4 across 40 pages
	MGK flyer bathroom concept with/without pricing German English	A4 up 4 pages
	MGK brochure German English	210 x 99 mm 36 pages
	MGK Fabrication guidelines German English	A4 up 36 pages

The unique way to our MAGNA Glaskeramik

- Story telling set
- Incl. sample Box small, bottle, shards, one sample (same colour)



LED Samples box big

- Incl. LED lighting, 6 samples 100x100 mm or 1 sample in 300x200 mm



Sample Boxes



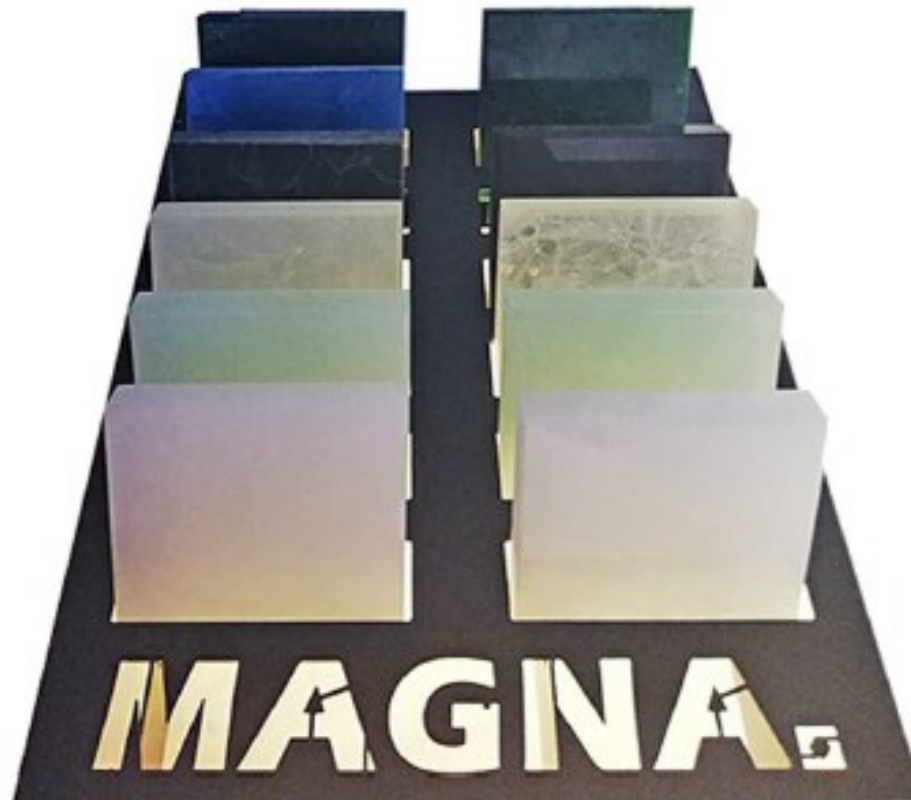
- Small Box incl. 2 Samples
100 x 100 mm

- Big Box incl. 6 Samples
100 x 100 mm



MAGNA Glaskeramik Table Display

- Incl. 12 samples 100x100 mm
- 370 x 230 x 360 mm



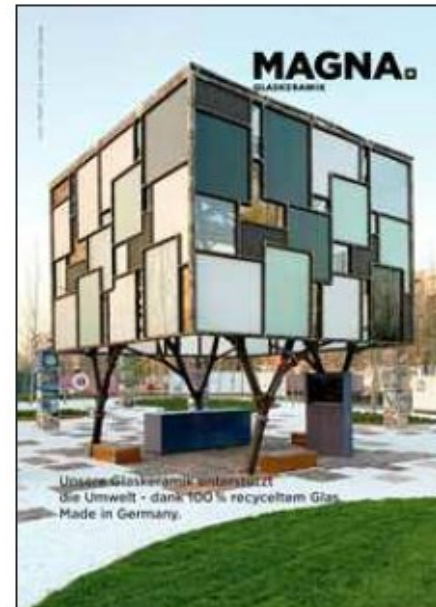
MAGNA Glaskeramik print



- Catalogue A4
- 40 pages

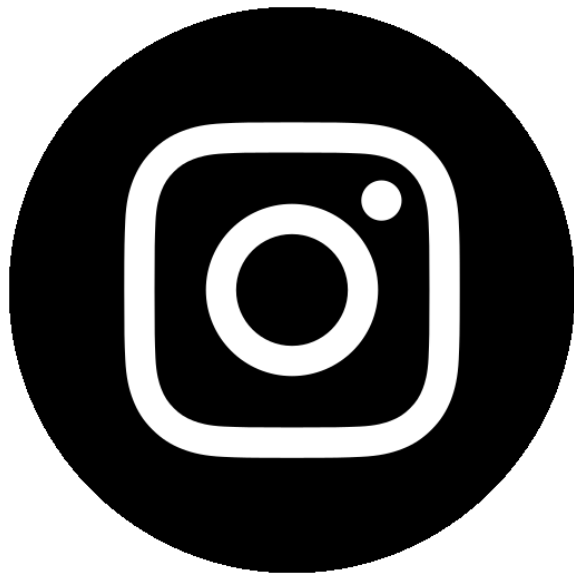


- Project book A4
- 80 pages hardcover



- Brochure 210 x 99 mm
- 36 pages

Social Media #MAGNAGlaskeramik | Instagram



The screenshot shows the Instagram profile for 'magnaglaskeramik'. The profile picture is the MAGNA GLASKERAMIK logo. The bio includes the text 'MAGNA Glaskeramik® Germany' and three bullet points: 'Patented design product made out of 100% recycled glass', 'Latest projects with Louis Vuitton, Porsche & H&M', and 'All projects are #madebymagna'. Below the bio are six category icons: Projects (globe), Production (factory), Sustainable (leaf), Company (location pin), Designs (brush), and Partner (people). The main feed shows a grid of images, including the Bauhaus Museum facade with scaffolding, a modern building with a glass facade, and an aerial view of a park.

magnaglaskeramik [Profil bearbeiten](#)

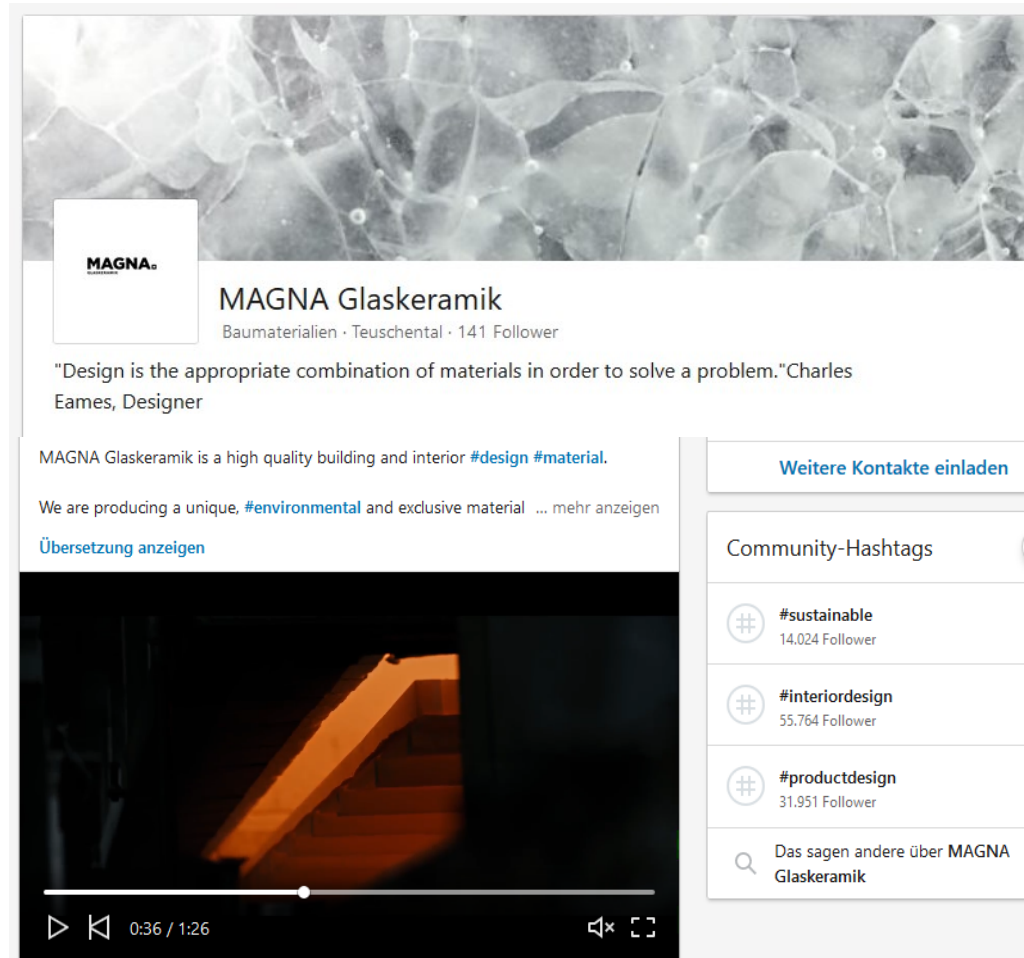
170 Beiträge 1.894 Abonnenten 1.091 abonniert

MAGNA Glaskeramik® Germany

- ◆ Patented design product made out of 100% recycled glass
- ◆ Latest projects with Louis Vuitton, Porsche & H&M
- ◆ All projects are #madebymagna

Projects Production Sustainable Company Designs Partner

Social Media #MAGNAGlaskeramik | LinkedIn



The screenshot shows the LinkedIn profile page for MAGNA Glaskeramik. At the top is a banner image with a microscopic view of a glass ceramic structure. Below the banner is the company name 'MAGNA Glaskeramik' and its location 'Baumaterialien · Teuschenthal · 141 Follower'. A quote by Charles Eames is displayed: "Design is the appropriate combination of materials in order to solve a problem." Below this is a post from MAGNA Glaskeramik mentioning design and material. A video player is embedded in the post, showing a 3D model of a staircase. On the right side, there are sections for 'Weitere Kontakte einladen', 'Community-Hashtags' (listing #sustainable, #interiordesign, and #productdesign), and a search bar for other mentions of MAGNA Glaskeramik.

MAGNA.
GLASKERAMIK

MAGNA Glaskeramik
Baumaterialien · Teuschenthal · 141 Follower

"Design is the appropriate combination of materials in order to solve a problem." Charles Eames, Designer

MAGNA Glaskeramik is a high quality building and interior [#design](#) [#material](#).

We are producing a unique, [#environmental](#) and exclusive material ... mehr anzeigen

[Übersetzung anzeigen](#)

[Weitere Kontakte einladen](#)


Community-Hashtags

- [#sustainable](#) 14,024 Follower
- [#interiordesign](#) 55,764 Follower
- [#productdesign](#) 31,951 Follower

Das sagen andere über MAGNA Glaskeramik

0:36 / 1:26

Social Media #MAGNAGlaskeramik | Facebook



MAGNA.
GLASKERAMIK

MAGNA
Glaskeramik
@magna.glaskeramik


Startseite

- Info
- Fotos
- Houzz
- Notizen
- Videos
- Beiträge
- Veranstaltungen
- Services
- Shop
- Gruppen
- Angebote
- Jobs
- Community

MAGNA Glaskeramik
Gepostet von Herbert Fahrenkrog [?] · 24. September · 🌐

MAGNA Glaskeramik in Manchester Academy Bar. Haptic an optic in a fantastic combination of translucence #adenbau #interior #blue #glas #translucent

Übersetzung anzeigen



5.418 Erreichte Personen 298 Interaktionen Beitrag bewerten

Folgen



MAGNA
ATELIER

MAGNA Atelier - nachhaltige und einzigartige Design Möbel, Tische und Accessoires

574 Follower • 4.141 Ich folge • magna-atelier.de

Leipzig, Germany

Magna Atelier ist der Online Shop für hochwertige und nachhaltige Inneneinrichtung, alle Produkte enthalten unser einzigartiges Material Glaskeramik®.

[Impressum](#)

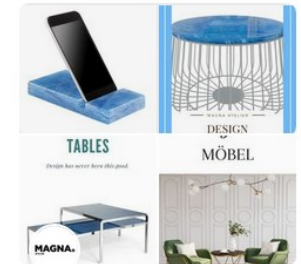
Die besten Pinnwände von MAGNA Atelier - nachhaltige und einzigartige Design Möbel, Tische und Accessoires



facades exterior
MAGNA Atelier - nachhaltige und ei

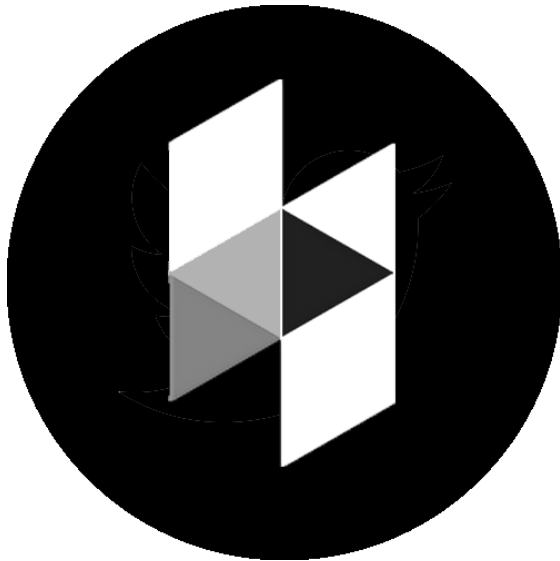


modernes Bad
MAGNA Atelier - nachhaltige und ei



Design Tische
MAGNA Atelier - nachhaltige und ei

Social Media #MAGNAGlaskeramik | Houzz



MAGNA_{GLASKERAMIK}
Teutschenthal

MAGNA Glaskeramik
Bewerten >
Teutschenthal

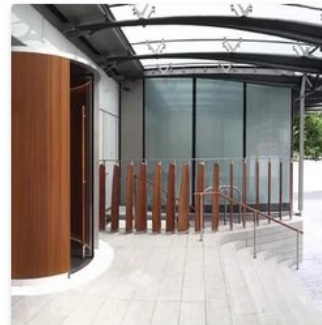
Anfragen
034601 39700

Übersicht Projekte Ideenbücher

Merken

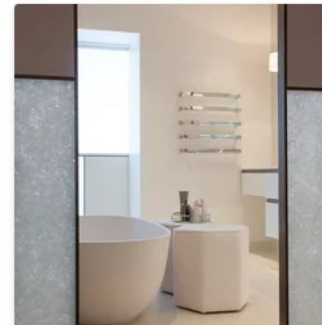
Unser Material, Glaskeramik, wird aus 100% recyceltem Glas gemacht, einen Beitrag zum Schutz natürlicher Ressourcen und zur Verbesserung der Nachhaltigkeitsleistung bei Bauprojekten und Innendesignobjekte. Dies bringt uns eine komplette umweltfreundliches Produkt mit einer großen Vielfalt an Farben und Anwendungen, von Gebäudefassaden, Innenwände und

30 Projekte von MAGNA Glaskeramik



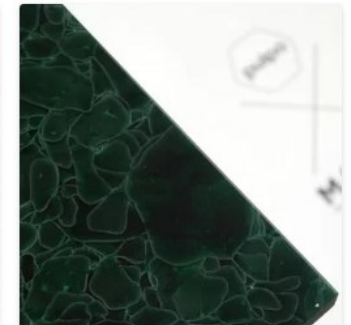
The Berkeley Hotel

37 Fotos



Badezimmer und Innenwand, Privathaus, London

3 Fotos



Desigtisch FONT LOW by PULPO

21 Fotos



MAGNA. 
GLASKERAMIK

PACKAGING
Cargo safety

Metal A-Frame = standard package 12 normal/10XXL salsb/frame



Wooden cheap delta-racks for small/mid-size cut-to-size works



Packaging and cargo safety

Container loading



Distance holder for slabs to compensate thickness tolerance on transport



U-Profil Styropor for edge protection while loading and unloading





MAGNA Glaskeramik GmbH

Straße der Einheit 18
06179 Teutschenthal, Germany
Tel. +49 34601 39700 | Mail: info@magna-glaskeramik.com
www.magna-glaskeramik.com

MAGNA Naturstein GmbH

Am Mittelfeld 1
39326 Loitsche | Magdeburg
Germany



THANK YOU FOR YOUR ATTENTION

MAGNA GLASKERAMIK GMBH 01|2020