

WATER FILTRATION SYSTEMS



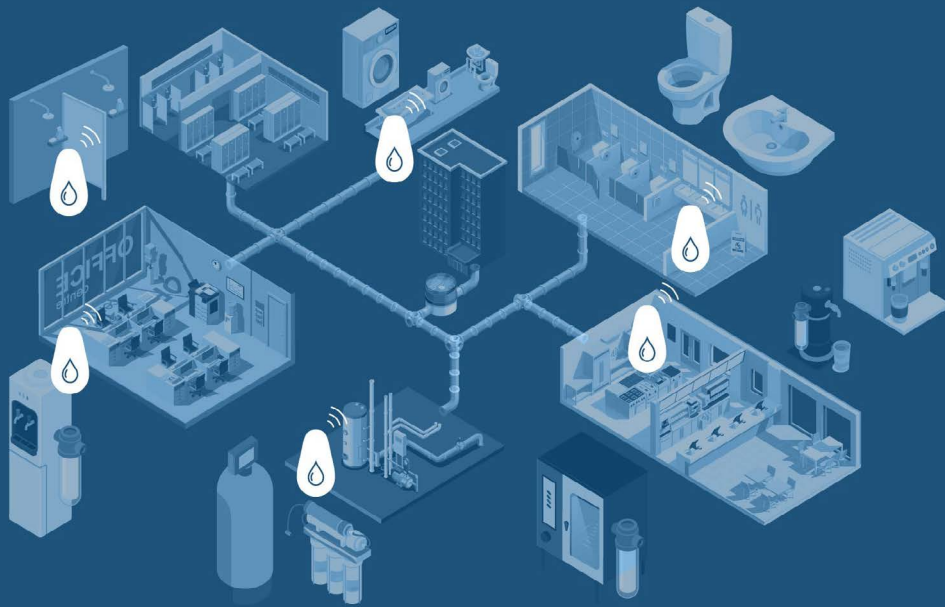
droople

SMART WATER MONITORING SOLUTIONS

BRING VALUABLE INSIGHTS TO A FORESEEABLE FUTURE

Droople's Water Intelligence Platform taps into hidden data with AI-enabled edge and cloud data processing by measuring water consumption and quality parameters at any point-of-use. The Internet of Water bridges precise monitoring capabilities, predictive maintenance, and end-to-end behavior insights.

At Droople we offer our customers full transparency on water consumption, and convert actionable data and information into a new business intelligence.



AUTOMATE PROCUREMENT



SHIFT FROM REACTIVE
TO PREDICTIVE MANAGEMENT



DEMONSTRATE
SUSTAINABLE IMPACT



WATER FILTRATION SYSTEMS



FILTERS



REVERSE OSMOSIS



SOFTENERS



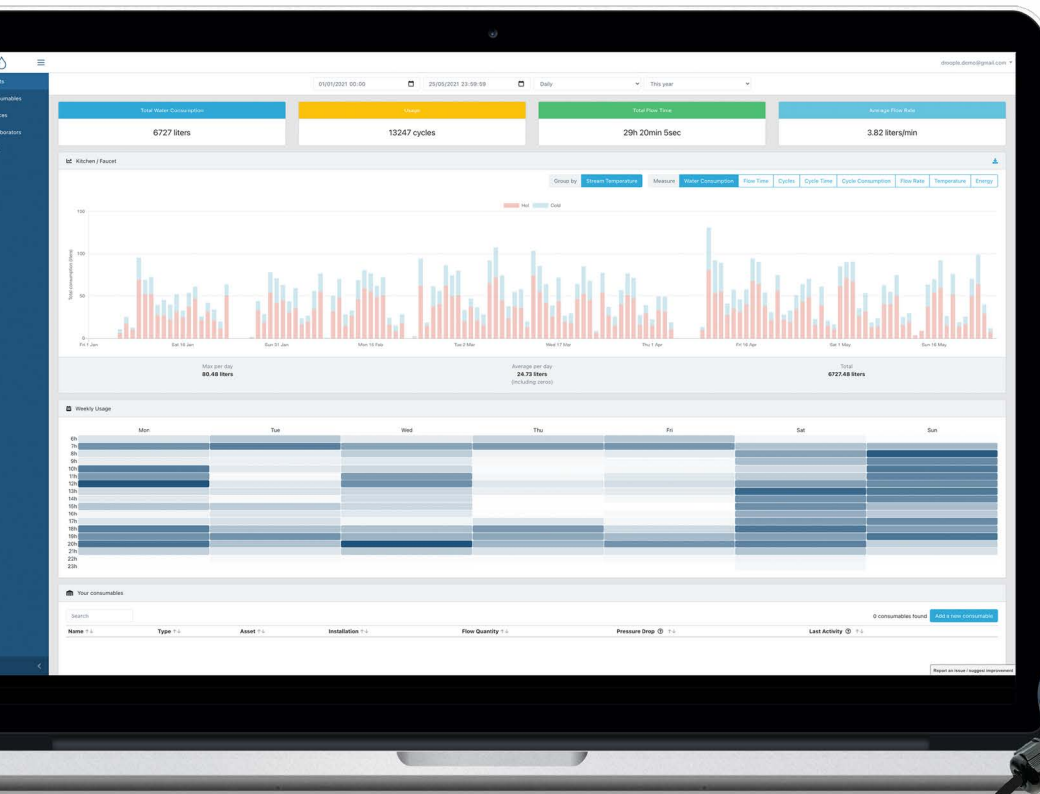
NEED FOR A CIRCULAR VALUE CHAIN

Sustainability and health consciousness challenge both businesses and their customers' expectations. While adoption of water treatment systems is expected to grow, there is a call for customers' need for supplier choosing power, quality transparency, and trust at the tap.

Building a competitive advantage in the industry entails both service excellence and cost reduction. Filtration systems are at the core of your business, so leverage today's digital means to unlock data for both logistics and customer experience as your edge. Gain consumable tracking insights to connect all steps of your value chain. Become precise in supply & demand for customer success.

HOW TO IMPROVE YOUR TOMORROW

- ◊ Enable lean logistics with automated procurement and optimised inventory
- ◊ Meet customer service expectations with predictive maintenance and optimal consumable fittings
- ◊ Extend asset lifetime in appliances or food equipment



EASY RETROFIT SOLUTION

Droople provides you the only fully retrofit solution on the market packaged with actionable insights. Easily adaptable to existing water filtration systems.

PLUG & PLAY

Connect smart sensors directly inline and ensure water quality monitoring and protection of assets.

YOUR CONTROL TOWER

Obtain data on various water parameters and consumable health status. Behavioral patterns of your consumables at your disposal.

- ◊ 24/7, Remote, Real-time
- ◊ Track flow rate, pressure, affluence & queue statistics
- ◊ Geolocation of your fleet, carbon and sediment filters, softeners and reverse osmosis systems
- ◊ Set alarms for anomalies, asset inactivity or define your own notifications



Lean Logistics

- ◊ Avoid inventory shortage and reduce overstock
- ◊ Forecast replacements with notifications 24/7
- ◊ Match size of consumable with active needs



Predictive Maintenance

- ◊ Ensure uptime of 99.9%
- ◊ Eliminate unplanned interventions
- ◊ Transition towards a usage based maintenance



Customer Retention

- ◊ Best-in-class service and transparency
- ◊ Protected asset lifespan
- ◊ Overcome initial upfront adoption
- ◊ Pay-per-use business modeling

Click for Success Story



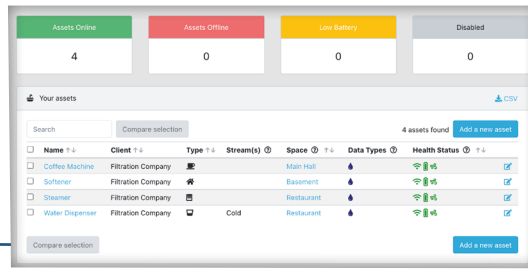
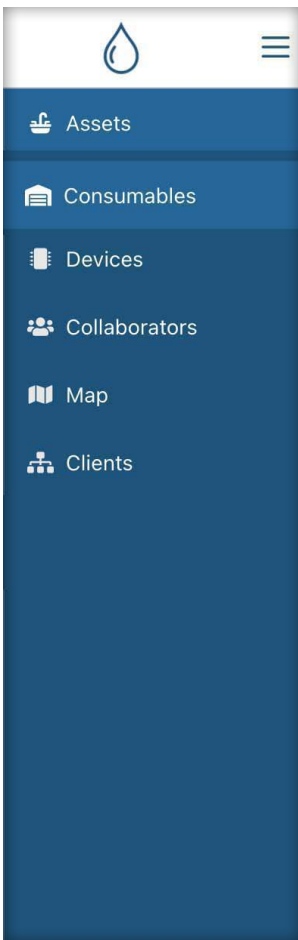


SMART MONITORING SOLUTIONS

YOUR INTELLIGENCE PLATFORM

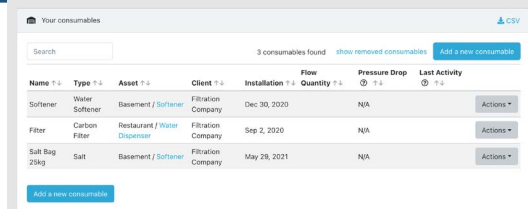
Droople's full-stack cloud solution delivers real-time monitoring and tailored benchmarks for your organization according to your operations.

Click me



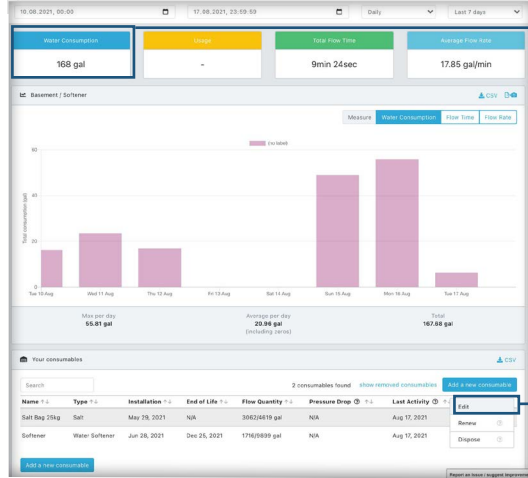
ASSET OVERVIEW

Geolocalise, benchmark and check your filters' health status



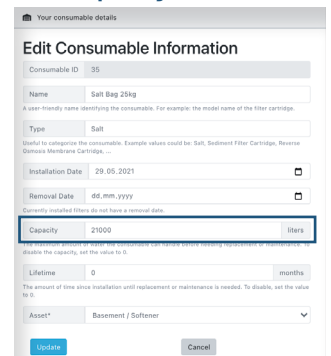
CONSUMABLE MANAGEMENT

Track, predict and optimise fittings for carbon and sediment filters, softeners and reverse osmosis systems

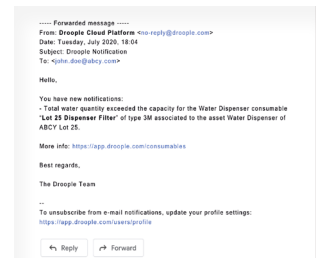


Total Water Usage

Set Capacity



Set Notification



ACCESS DEMO





YOUR DROOPLE PACKAGE

Sensors



Flow rate & temperature



Flow rate, temperature & conductivity



Pressure

Communication module



iLink®

Internet Access Gateway



Mini Hub®





As easy as 10 minutes to install and register:

CONNECT

Sensors retrofit to inline pipes measuring flow and temperature, pressure and conductivity

UNDERSTAND

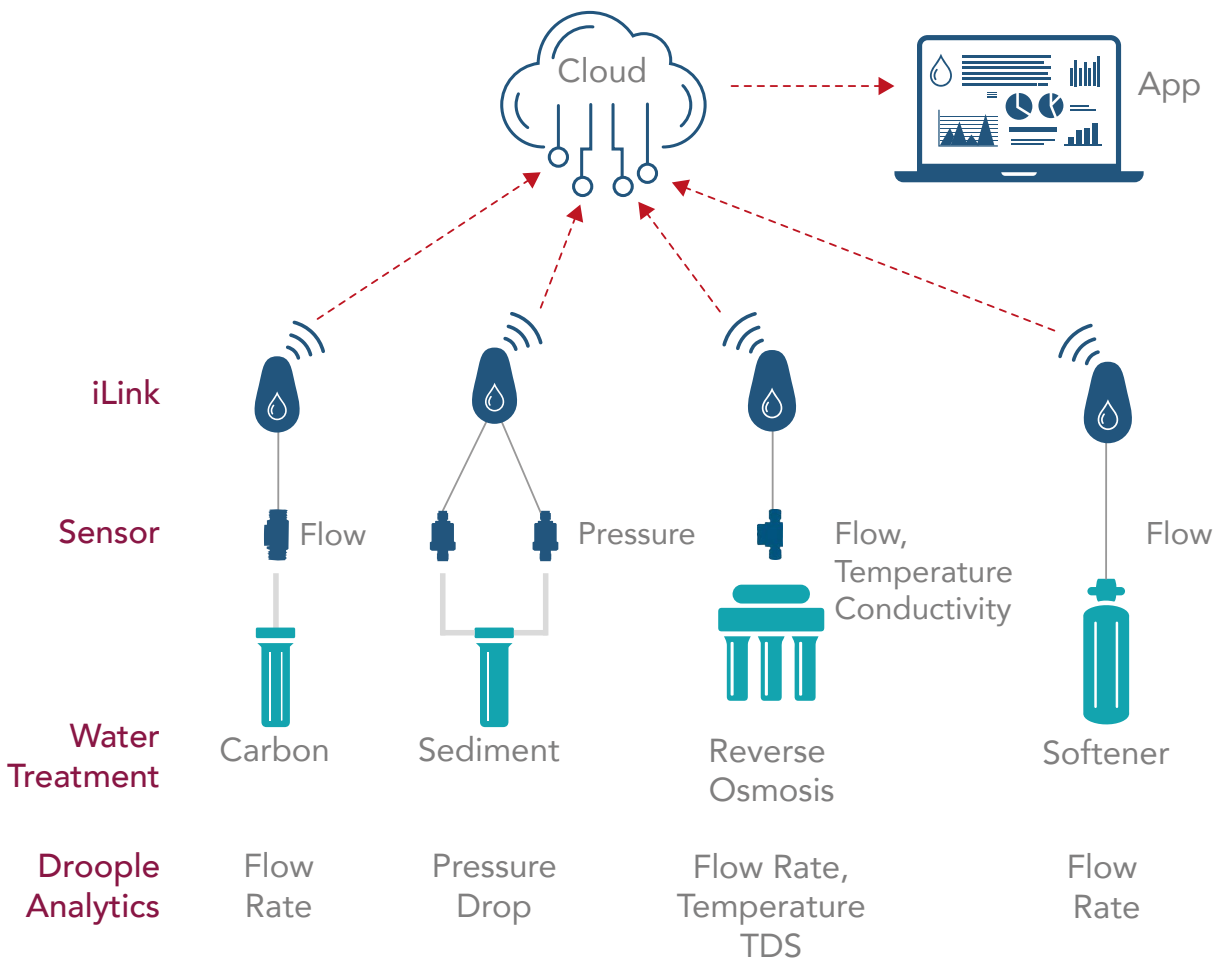
The iLink harvests your data and securely sends to the cloud.

VALUE

The cloud platform stores the historical data and process insights useful to your business.

MANAGE

Your dashboard app provides remote, real-time monitoring and alarm notifications. Gain insights to water usage, the health and status of your fleet and consumables.



Sensors



		Flow & temperature	
Flow rate	1/2":	0.5 – 20 l/min	
	3/4":	2 – 30 l/min	
	1":	3 – 45 l/min	
Working temperature		4 – 65°C	
Pipe connection		Male - Male NPT or BSP	



		Flow, temperature and conductivity	
Flow rate	1/4":	0.3 – 9.3 l/min	
	3/8":	0.5 – 15.3 l/min	
	1/2":	0.5 – 27 l/min	
	3/4":	0.5 – 15.3 l/min	
Working temperature		0 – 70°C	
Conductivity range		0 - 1000 uS/cm with +/- 3% linearity error Resolution of 0.1 uS/cm up to 50 uS/cm	
Pipe connection		Male - Male BSP	



		Pressure	
Pressure range	1/4":	0 - 10 bar	
Working temperature		0 - 70°C	
Pipe connection		Male BSP	

Communication Module

iLink



Radio Protocol	LoRaWAN EU 868 MHz / US 915 MHz / AS 923 MHz
Data frequency	5 min
Battery	Lithium 2600mAh
Lifetime	Up to 10 years
Size	H 85mm x L 55mm x W 30mm
Water resistance	IP67
Certificates	EU/FCC/IC/TELEC
Certificates	EU/FCC/IC/TELEC

LoRaWAN Gateway

Mini Hub



Frequency Band	EU 868 MHz / US 915 MHz / AS 923 MHz
WiFi	802.11 b/g/n 2.4 GHz
Antenna type	Built-in LoRa and WiFi antenna
Power Supply	Wall plug type / USB-C port
Size	H 80mm x L 80mm x W 40mm
Certificates	EU/FCC/IC/RCM/WPC



droople

Droople develops innovative IoT solutions for intelligent water asset management to deliver real-time insights at any point of use. Connect sanitary ware, water treatment systems, and other appliances. Our AI-enabled tools empower customers worldwide to accurately measure, monitor, and analyze their water processes for predictive and proactive maintenance. Untap potential water and energy savings.





droople

ROUTE DU VERNEY 18, 1070 PUIDOUX, SWITZERLAND
+41 22 534 99 48 | contact@droople.com | www.droople.com