

Bin-e

# SMART WASTE BIN

Revolutionizing the  
waste management  
system



# LET'S SORT OUT YOUR WASTE PROBLEM

Bin-e is an AI-based smart waste bin, designed for public places, enabling them to simplify recycling. It sorts and compresses the waste automatically, controls the fill level and processes data for convenient waste management.





# DESIGNED FOR ALL KINDS OF PUBLIC PLACES

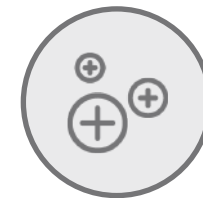


# FOR SAFE AND GREEN HOSPITALS

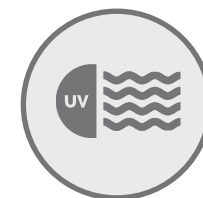
You can adjust your smart waste bin to new safety and hygiene requirements. We offer various features that ensure 100% COVID-19 safety for the users but also for your cleaning service.



**SEPARATE FRACTION FOR  
COVID WASTE**



**ANTIBACTERIAL SURFACE  
WITH SILVER IONS**



**UV INTERIOR (WASTE)  
DISINFECTION**



# GET DETAILED INSIGHTS ON YOUR SUSTAINABILITY PERFORMANCE



Our app provides information about the fill-level of your Bin-e devices and notifies you when they need to be emptied. It also gives you detailed statistics and reports about waste production, taking CSR reporting to a whole new level.



**Stats & analytics for CSR reports**



**Fill level notifications**



**Content customization & management**

# A GAMECHANGER TO PACKAGING RECYCLING



## Without Bin-e

- Lack of knowledge about proper waste sorting and recycling
- High costs of waste management and disposal
- No incentives for proper waste disposal
- Lack of digitization of waste management services

## With Bin-e

- High waste sorting accuracy
- Lower costs of waste management and disposal
- Incentives for proper waste disposal
- Digitization of waste management services
- Real-time data, reports & analytics



# WORLD'S SMARTEST E-WASTE SOLUTION

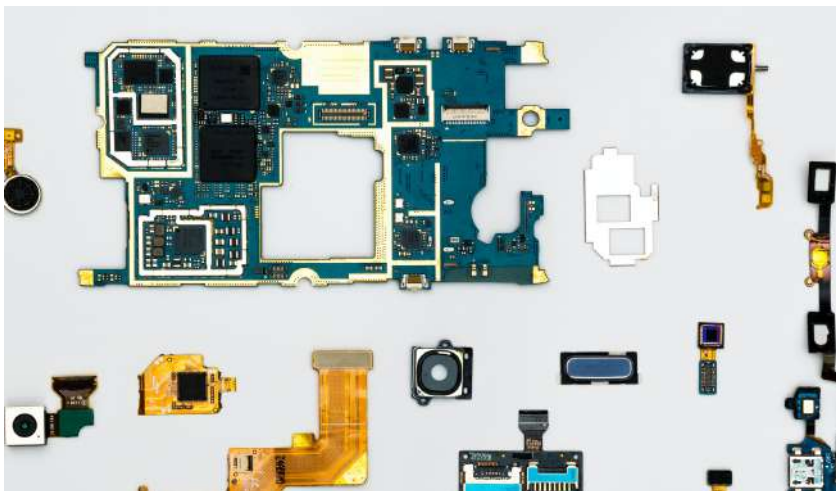
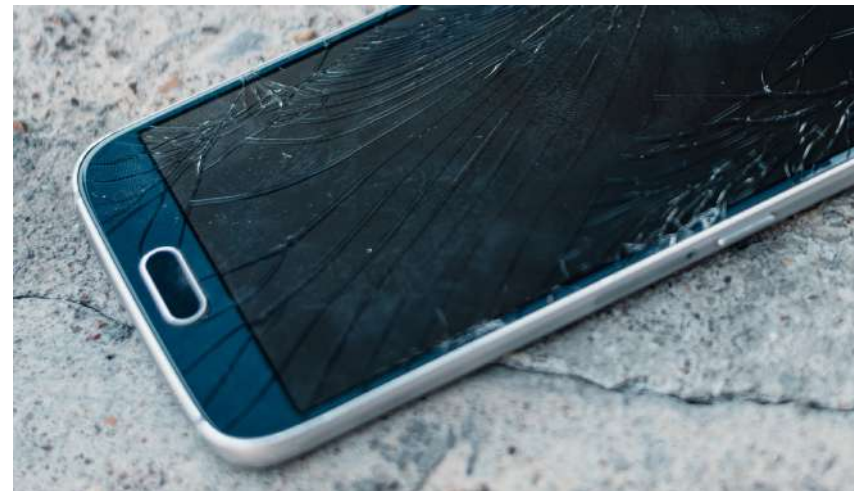
## Without Bin-e

Low recycling rate & lack of resources on Earth

Lack of effective gratification systems, new caution rules

Inefficient waste collection system

Non-compliance with standards by manufacturers and incurring additional fees



## With Bin-e

Higher recycling rate of rare raw materials

Circular use of resources

Effective systems for gratification

Accumulation of benefit points by users

Customized & interactive user communication



# CUSTOMIZE YOUR DEVICE



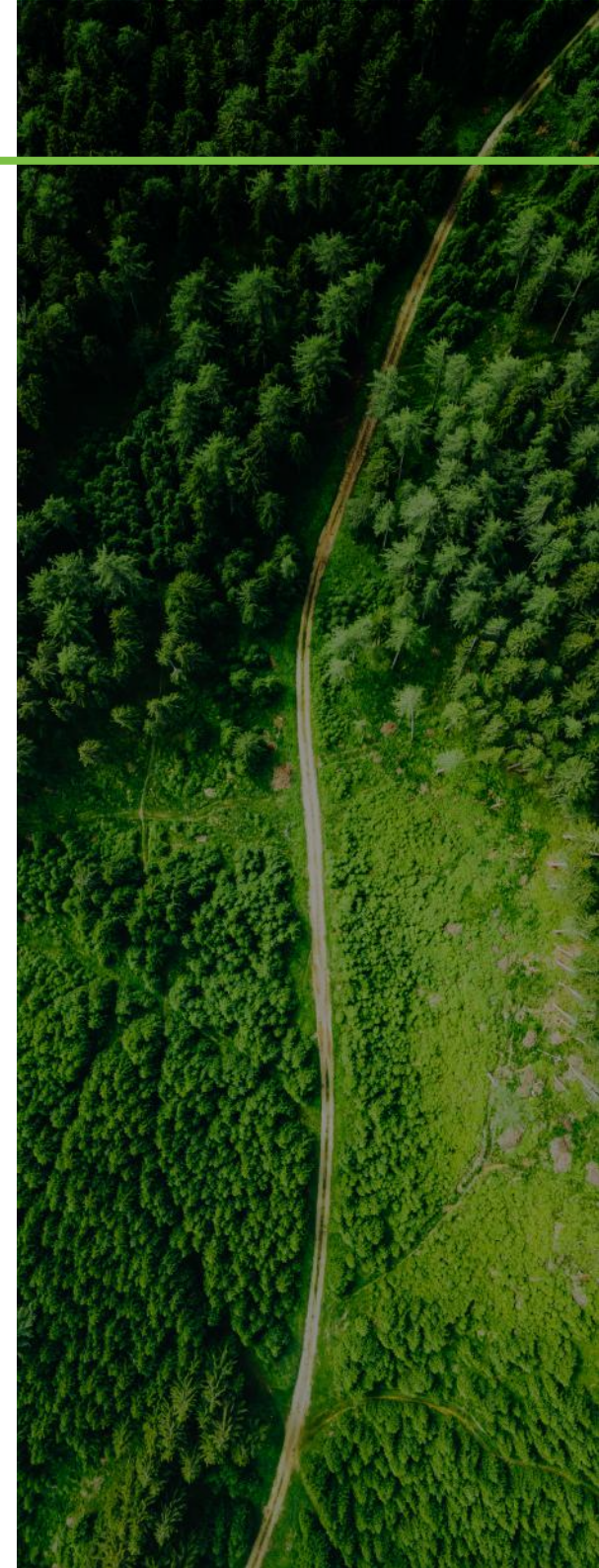
## Your perfect look & feel

Cover Bin-e with customized graphics, choose the color of the casing & the inner bins. You can select one of our pre-made projects, create your own graphics or we can design something customized for you.



## A solution that entirely fits your recycling needs

Configure the fractions to be 100% compliant with your local recycling guidelines. Bin-e can be even a collection point for e-waste and batteries. It's all up to you!





# YOUR SUSTAINABLE BUSINESS

## Join the green business leaders

Precisely sorted waste

Lower costs of waste management

Real-time data & analytics for CSR reporting

Customized content display, enabling additional revenue from advertisers



# BIN-E MODELS COMPARISON



	STANDARD BIN-E	BIN-E WITH 50" DISPLAY
Standard features	✓	✓
Automatic opening	✓	✓
Own content display	✗	✓
Screen dimensions	11.6"	11.6" + 50"

## TECHNICAL SPECIFICATION

### Dimensions:

202 cm x 116 cm x 64 cm

### Capacity:

4 x 60 L

### Electric power supply:

(AC) 230 V

### Standard fractions:

glass, plastic, paper and metal. Fractions can be customized, e.g. e-waste or plastic bottles.

### Connection:

Wi-Fi and GSM modem

### Opening:

automatic

### Anti-COVID package (optional):

casing covered with silver ions, separate fraction for COVID waste, UV-C waste disinfection



# Bin-e

**JOIN OUR WORLD OF BIN-E!**

[www.bine.world](http://www.bine.world)  
[contact@bine.world](mailto:contact@bine.world)  
+ 48 661 111 217

Pasjonatów 9 | 62-069 Dąbrowa | Poland



**BIN-E  
HEADQUARTERS**

