

WATA TECHNOLOGY

A SIMPLE AND STANDALONE
SOLUTION FOR DISINFECTION
AND WATER TREATMENT

WATA™



WATATECHNOLOGY.COM

WHY HAS WATA BEEN DESIGNED?

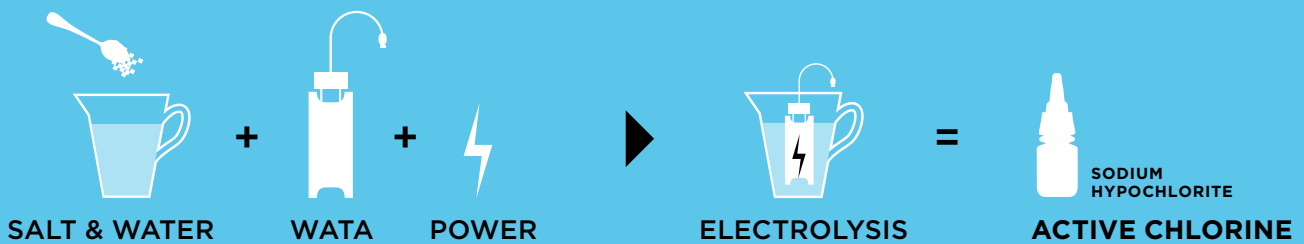
Every year **MORE THAN 842,000 PEOPLE DIE** from waterborne diseases. Yet chlorine eliminates **99.9% OF PATHOGENIC MICRO-ORGANISMS** present in the water and prevents its recontamination.

But for logistical and cost reasons, chlorine is rarely available in remote areas where the most vulnerable communities live.

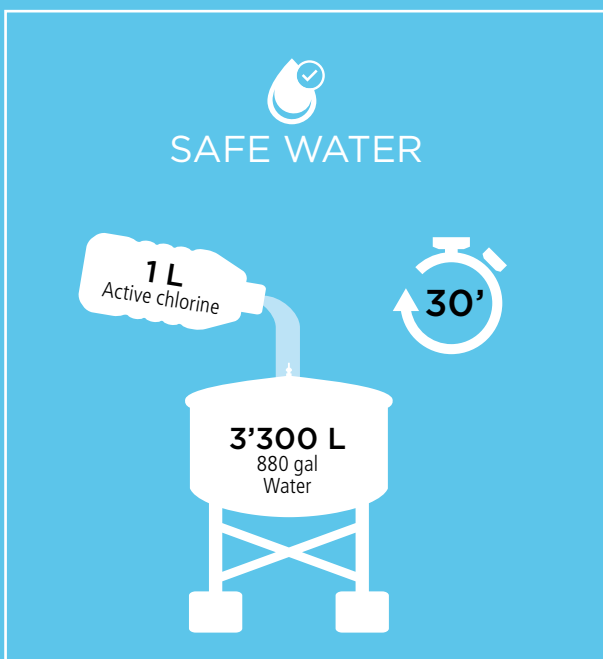
THANKS TO WATA, USERS CAN PRODUCE CHLORINE LOCALLY AND AT LOW COST.

HOW DOES WATA WORK?

WATA technology is based on a simple process of electrolysis which transforms a salt water solution into active chlorine with a concentration of 5g/L (0,5%).

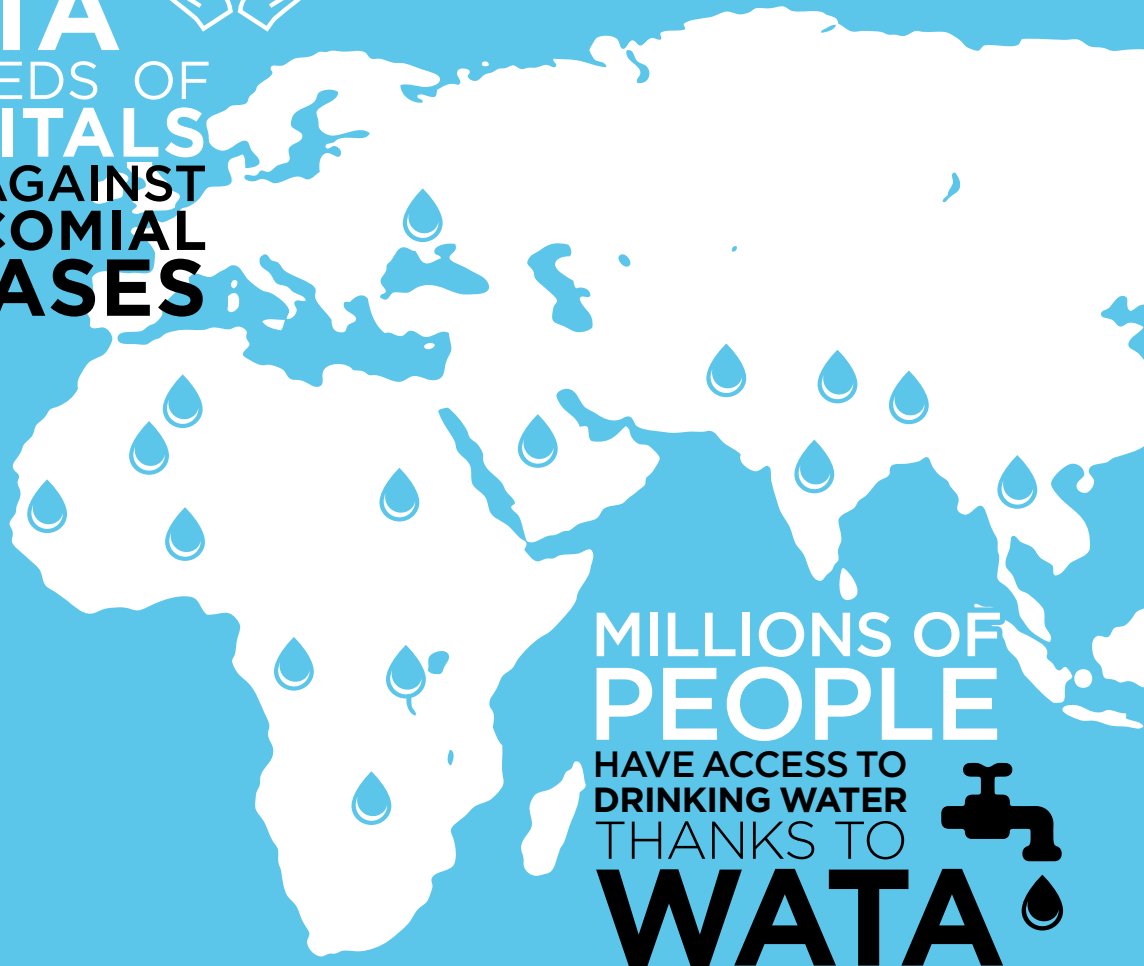


The active chlorine produced can be used to treat drinking water, or as a disinfectant solution for wounds, objects, surfaces etc.



WHERE ARE PEOPLE USING WATA?

THANKS TO
WATA
HUNDREDS OF
HOSPITALS
FIGHT AGAINST
NOSOCOMIAL
DISEASES



MILLIONS OF
PEOPLE

HAVE ACCESS TO
DRINKING WATER
THANKS TO

WATA



WHO IS ALREADY USING WATA?



Schweizerische Eidgenossenschaft
Confédération suisse
Confederazione Svizzera
Confederaziun svizra

Swiss Agency for Development
and Cooperation SDC



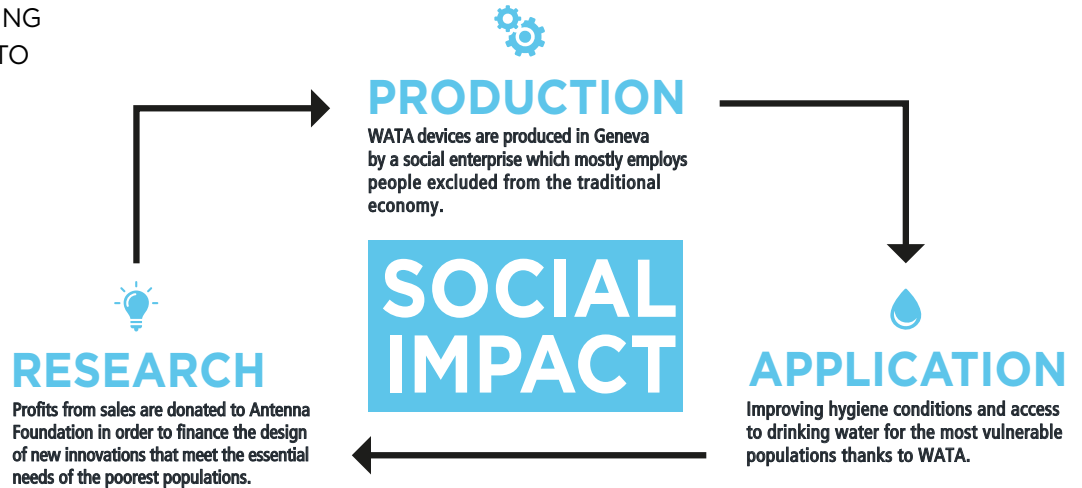
Deutsche Gesellschaft
für Internationale
Zusammenarbeit (GIZ) GmbH





WATALUX'S MISSION IS TO REDUCE EXTREM POVERTY AND IMPROVE HEALTH CONDITIONS OF THE MOST VULNERABLE COMMUNITIES BY PROMOTING INNOVATIONS DEDICATED TO ESSENTIAL NEEDS.

Based in Geneva and founded by the Antenna foundation. Though its action, WATALUX intends to be an initiator of social impact at each step of its process.



WATATECHNOLOGY.COM



ANTENNA'S MISSION IS TO ENGAGE IN SCIENTIFIC RESEARCH AND DISSEMINATION OF TECHNOLOGICAL, HEALTH AND ECONOMIC SOLUTIONS FOR THE MOST DISADVANTAGED.

The Antenna Foundation is a Swiss not-for-profit foundation recognised to be of public utility.

In collaboration with an international network of scientists, Antenna undertakes and participates in research projects in the fields of nutrition, drinking water, agriculture, medicines, energy and in technologies to meet basic needs.

SOCIAL ENTERPRISES INCUBATOR

Our approach is based on the creation of sustainable economic models to guarantee long-term dissemination of our technologies.



ANTENNA.CH